

## Silly Froshlings Squander Last Days of Freedom

by Paul Shubert

Like lambs to the slaughter, another flock of incoming freshmen has descended upon Caltech—212 in all. Included in this year's frosh class are 22 women (you remember women, don't you?), a decrease of eight from last year. According to Dr. Stirling L. Huntley, director of admissions and financial aid, the drop is due to fewer women accepting admission, since about equal numbers of women were offered admission both years.

The frosh class will again be shipped out of the smog, on to sunny, cactus-infested Catalina Island for orientation, and then back on campus to experience the joys of rotation.

This year's frosh are the first ever to gain admission to the Institute without a personal interview, due to the energy crisis. While he plans to resume the interviews next year, Huntley has assured that the quality of this year's freshman class is "As high, or higher, than ever."

Enjoy. Catalina will be left behind come Saturday evening. Signs of impending disaster may well become obvious on Tuesday.

## Millikan Institutes Security Measures

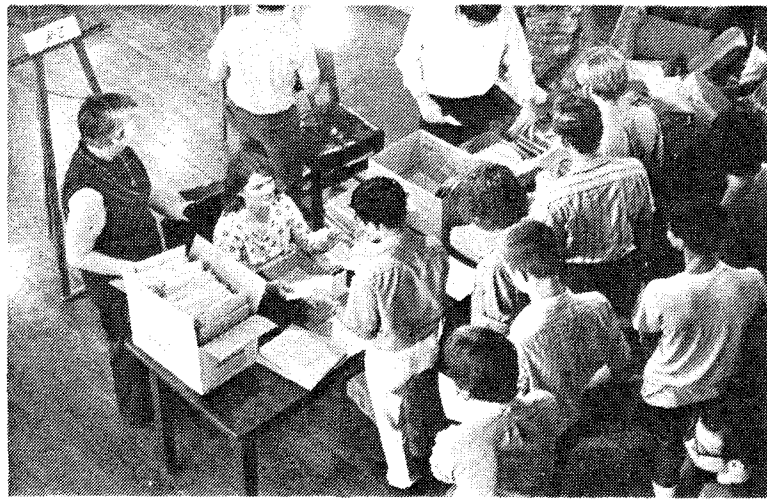
New library security measures, which will go into effect October 1 in the Millikan Library, are designed to minimize unauthorized removal of library materials by off-campus users. Entrance to and exit from the Millikan Building will be through the south doors only. Caltech/JPL people will only have to show their ID card, while off-campus users will register with the attendant and show what they are carrying when they leave. There may be brief delays on entering and leaving; these can be minimized if you have your ID card in hand on entering and leaving.

## Chess, Anyone?

## PDP-10 \$50 Limit Deleted

At the suggestion of the Computing Facilities Advisory Committee, and with the approval of the Administration, the Computing Center will experiment with a new policy governing student use of the PDP-10 computer during the 1974-1975 school year.

As in the past, each student wishing access to the computer will obtain an account by reporting to the Computing Center Business Office, Room 158, Jorgensen. This account, as previously, has been set up by the Administration to pay the Computing Center for all student use of the facility. This year, however, no dollar limit will be



ANOTHER FATE IS SEALED. Freshman registration was Wednesday in Dabney. Photo by R. Gruner

## 190 Frosh Lose

## IHC Delays Inevitable

by Shmuel Shmuckputz

By a five-to-two vote, the IHC decided Wednesday not to reconsider its adoption for this year of the rotation system used last year. A question of its legality had been raised last June when the Department of Health, Education, and Welfare brought forth regulations concerning discrimination on the basis of sex in student housing assignment. It turned out that the "regulations" were only recommendations and would not become law until November. Thus, the current system, though still discriminatory, may be legal (the applicability of Title 9 of the Civil Rights Act is currently under investigation).

The other major action of the meeting was the strong reaffirmation of Rotation rules. Violations of the rule prohibiting any characterization of another house or of individuals in another house will be tried as soon as possible, with fines of at least \$15 to be imposed on an offending house.

Two cases have already been heard. One involved two upperclassmen from two different houses who characterized a few of the houses while driving out here with a freshman. The presidents of the houses to which the upperclassmen belonged moved and seconded that their own houses be fined \$15 each;

the motion passed unanimously. The other case concerned an upperclassman who told a group of freshmen stories highly derogatory towards an individual in another house. The house to which the upperclassman belonged moved to fine itself \$20; again the motion passed unanimously.

Upperclassmen take note—the IHC means business!

## Student Security Force To Be Organized Soon

This summer has been fairly typical with regards to thefts; there have been a fairly typical number of them. The hardest hit items were the small calculators, radios, and the like. Most of these thefts, however, had one thing in common — they were from unlocked rooms.

In an interview with one thief who was caught Lee Chapman, head of campus security, learned that the normal mode of operation is to just go down a hall and check for unlocked rooms.

There are several recommended ways to prevent these ripoffs. The first is to lock your door. Most thefts involve unlocked doors. The second is to report suspicious people to security, by calling x1702. And third, if you don't lick your door, at

## Health Center Abandons Full Student Service

by Eric Eichorn

Caltech's Health Center will be closed on weekends this year due to budget cuts in student services. Contrary to plans announced at the end of last year, RN coverage will be maintained at all times the center is open, but it will close completely (i.e. not even a "caretaker") from noon Saturday to 8 a.m., Monday.

Cases of serious physical illness will be sent to Huntington Memorial Hospital. All others, including contagious illnesses not requiring constant treatment, will be sent back home to the student houses or off-campus housing.

Lyman Bonner, Director of Student Relations, stated that weekend closure was chosen as the best way to save money since it was qualitatively determined that weekend occupancy of the Health Center is lower than during the week. He theorized that this was due to pressures of

academic life at Tech, and escape from such pressures was not necessary on weekends. He further noted that student infirmaries are being phased out from college health centers all over the country, so things are not really worse here than at most other places.

There have been fears that as a result of more patients being sent to Huntington (on Blue Cross coverage) there would be an increase in Blue Cross premiums for members of Caltech's group plan. Bonner denied this, saying that most of the cases which will now be sent there on weekends would have gone there anyway. This seems to imply that most people not on the verge of death will be sent home. He said that most students are admitted to the infirmary because they are contagious or in need of rest. They will now have to rest (or avoid being contagious) in the houses.

Some major personnel changes have also taken place over the summer. Ian Hunter is no longer Health Center Administrator. "Dr. Hunter was pleased and relieved to get back to full time psychological counseling duties," related Bonner. Dr. Ketabgian is a full time physician now that he is not Director of Health Services. Doreen Kroeger, who was nursing supervisor, has been terminated.

Tech is currently advertising for a "Senior Nurse" who would not be a supervisor. Bonner is acting as Director until other arrangements are made. He states that he hopes to have the situation in control by the end of this academic year.

Comments or complaints about the Health Center should be directed to Stephen Aley, Undergrad rep on the Health Committee, Dr. Jerome Vinograd, chairman of that committee, or to Bonner.

## Gracious Living



Y CAMPING TRIP in Ensenada prepared the Freshmen to endure the hazardous way through the Throop Site to 201 Bridge. Photo by G. Laib

- Locking the program in core
- Reading or writing files protected against such activity.
- Bypassing the Accounting System.

As we stated in the first paragraph, this new policy is a one year experiment. Its future depends heavily on this year's experience. We believe this new arrangement is a good one and that it will work satisfactorily. Whether we prove to be right or wrong depends on you. We welcome any comments you might have regarding this matter; please direct them to C. B. Ray, 158-79.

specified on the student authorization. In a sense, therefore, each student is granted unlimited access to the PDP-10, but we would hasten to add that the funds available for this use are not limitless.

- The account may not be used for commercial (e.g. money-making) or extra-Caltech activities.
- The account is not transferable.
- The account may not be used for computing associated with sponsored research.
- The account may not be used intentionally to exercise privileges to which the user is not normally entitled. Examples are:

Editorials

# Just For You, Frosh

Another one. Nineteen summers ago most of you frosh weren't even twinkles in your parents' eyes, and here you are trucking off to Frosh orientation (whatever that is).

Some of you may grow up during your few years here, others may not, and the lucky already have. As for *The Tech*: it never will.

But what we've done for you this year is the same thing we did for last year's new students: we're giving you what we hope is a little insight into the Caltech style. Random. Unusual. Laced with incomprehensible logic.

Most of the upperclassmen you'll find have grown to appreciate the patterns of life at this Institution. We hope that many of you will too.

-Dennis L. Mallonee  
R. Gruner  
SMC Sweeney

## .500 On Policy

Once again significant changes in Institute treatment of undergraduates have been announced during the summer months. Two of the most important changes involve the Computing Center and the Health Center and represent, respectively, a worthwhile reduction in red tape and an obvious invitation to disaster.

The new policy of the Computing Center lifting the fifty dollar limit from general student accounts should solve many of the problems recently associated with student usage of the PDP-10. Attempts to expand accounts through clandestine methods and the "loaning" of accounts from one student to another lose their attractiveness under the new system. Only a small increase in the total usage of the PDP-10 is anticipated as the result of this policy change since most major student users were previously using the system to their personal capacity. In addition, the cost of an increase in usage will be partially offset by the reduced accounting costs involved in keeping track of only one account per student. Indeed, the Editors wish to congratulate the Computing Center personnel for finally recognizing that their primary duty is to run a computing facility, not an accounting house.

The second major change in the treatment of undergraduates is the result of the closing of the Health Center on weekends. Prompted by recent budget cuts, this reduction in services requires many students with minor but incapacitating diseases to attempt convalescence in the student houses on weekends. The fact that many of the cases normally handled by the Health Center on an overnight basis involve either a contagious disease (colds, flu, etc) or a state of mental or physical exhaustion and that this new policy will return such cases to the student

Continued on Page Four

**Guitar Corner**  
**Guitars-Amps-Drums**  
**P.A. Systems**

Fender - Gibson - Acoustic  
 Guild - Ovation - Rogers  
 Ludwig - Cordovox - Shure

**447-0060**

**1023 So. Baldwin Arcadia**

### Pekies



### ASCIT of BB

# Presenting Your Beautiful BOD

by Biljo Black

For every body of people brought together, whether by circumstance or necessity, there are those who seek to govern and those who have government thrust upon them. The government performs services for the body and exists as long as it is tolerated. The Caltech student body has ASCIT. And ASCIT has the BOD.

The President of the Associated Students of the California Institute of Technology, Inc., is also the nominal chairman of the Board of Directors. The position carries the awesome responsibility of making sure that everything gets smoothed over, and is currently held by Liz McLeod.

The Vice President Alan Shiller, has, if anything, a tougher job than the President. In addition to his administrative tasks he must also serve as chairman of the Board of Control, which administers justice to the world, and of which you'll hear more later.

Of course, there has to be a secretary, or else no one would remember what happened the last time they met. And, just as obviously, there isn't one at the moment, Mallonee having resigned within the last week. The Secretary is nevertheless responsible for getting what everyone says on paper for purposes of blackmail.

Ole Anderson, now serving as Treasurer, is the lone voice of fiscal sanity in the rampaging world of non-economists. He's good at thinking up reasons for not doing anything (money).

#### Affairs? What Affairs?

The Director for Academic Affairs is Jon Teich. He performs the duty of preparing the

teaching quality polls and serves as chairman of the Educational Policies Committee.

The Director for Social Activities, that great organizer of things like social events and other random jobs, is Paul Manis (who single-handedly replaced Beckman, Simay, and Rutherford).

The Interhouse Committee Chairman also sits on the BOD. Jim Kleckner lords it over the group that's responsible for disputes and coordination between the student houses.

And then there are the Directors-at-Large. These two industrious sophomores really get to do the random stuff for the BOD, like serve the President's whims, and organize the Red

Cross blood drive. Dick Beatty and Rich Pietrasz fill these positions and are recuperating nicely.

#### BOC, IHC, BYOB

There are other offices, which have no voting power, filled at the same elections as the ones above. The Activities Chairman, Bob Loveman, runs the ASCIT movie program, which brings feature films and roadrunner festivals to campus on Friday evenings for a minimal (50 cent) charge. Steve Grennan is the BOC Secretary, who does just that. The Athletic Managers try to mediate between ASCIT and the athletic program, and for that two people are needed: John Denker and Debbie Wilson.

Finally, there's the fourth estate. The Tech Trio itself. Major Be-Zonk, the Masked Tarantula, and the Rectilinear Grunge Monster. Make your own guesses.

Remember, this greatest show on campus, the BOD meeting, is open to the public, for free, in Winnett Lounge, sometime during each week. Come and watch the clowns do their act. No donuts, please.

## Music Classes for Techers Continue

The Humanities and Social Sciences Division will continue with its program of chamber music this fall. Instrumental and ensemble playing instruction will be available to other than beginning students in strings, woodwinds and french horn. This is open to students, faculty and staff members of Caltech and JPL.

The Workshop will be conducted by Alice and Eleonore Schoenfeld, artists-in-residence. Auditions for interested persons will be held on Thursday, October 3, at 4 p.m. in Room 25 Baxter. Those who have participated previously and wish to continue need not audition. The first regular meeting of the Workshop will be held on Thursday, October 10 at 5 p.m. in Baxter Hall, Rooms 19 and 25.

## The CALIFORNIA Tech

Thursday, September 26, 1974  
Volume LXXVI Number 1  
Published weekly except during vacation and examination periods by the Associated Students of the California Institute of Technology, Incorporated. Opinions expressed in all articles herein are strictly those of the authors and do not necessarily reflect the opinions of the editors or of the corporation. All rights reserved.

Editors-in-Chief Richard S. Gruner  
Dennis L. Mallonee  
SMC Sweeney  
Associate Editor Eric H. Eichorn  
Entertainment Ed Chris Hovecourt  
Features Editor Greg Simay

Staff ..... David Callaway, Flora Constanten, Tim Groat, Karl Kuhlmann, Jim Muliany, Mary Beth Ogilvie, Peter Pathe, Etaoin Schroedlu, Alan Silverstein, Nick Smith.

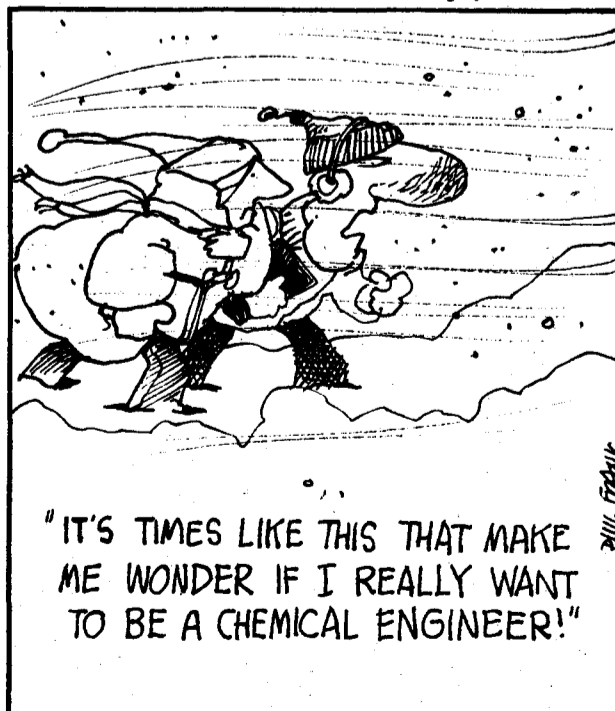
Photographers ..... Ray Feeney, R. Feldman, Gerald Laib, Terry Sheehan.

Business Manager Gavin Claypool  
Circulation Manager John Dittes

The California Tech Publication Offices: 107-115 Winnett Center (105-51), California Institute of Technology, 1201 East California Boulevard, Pasadena, CA 91109 Telephone: (213) 795-6811, x2154. Printed by News-Type Service, 1506 Gardena Avenue, Glendale, CA. Represented for national advertising purposes by National Educational Advertising Services, Inc. Second Class postage paid at Pasadena, California

Subscriptions ..... \$1.50 per term  
..... \$4.00 per year

### FRANKLY SPEAKING... by phil frank



© COLLEGE MEDIA SERVICES • BOX 9411 • BERKELEY, CA. 94709

# THE CALTECH GLEE CLUB

"I CALL THIS SUPERB SINGING...MAGNIFICENT SINGING FROM START TO FINISH."

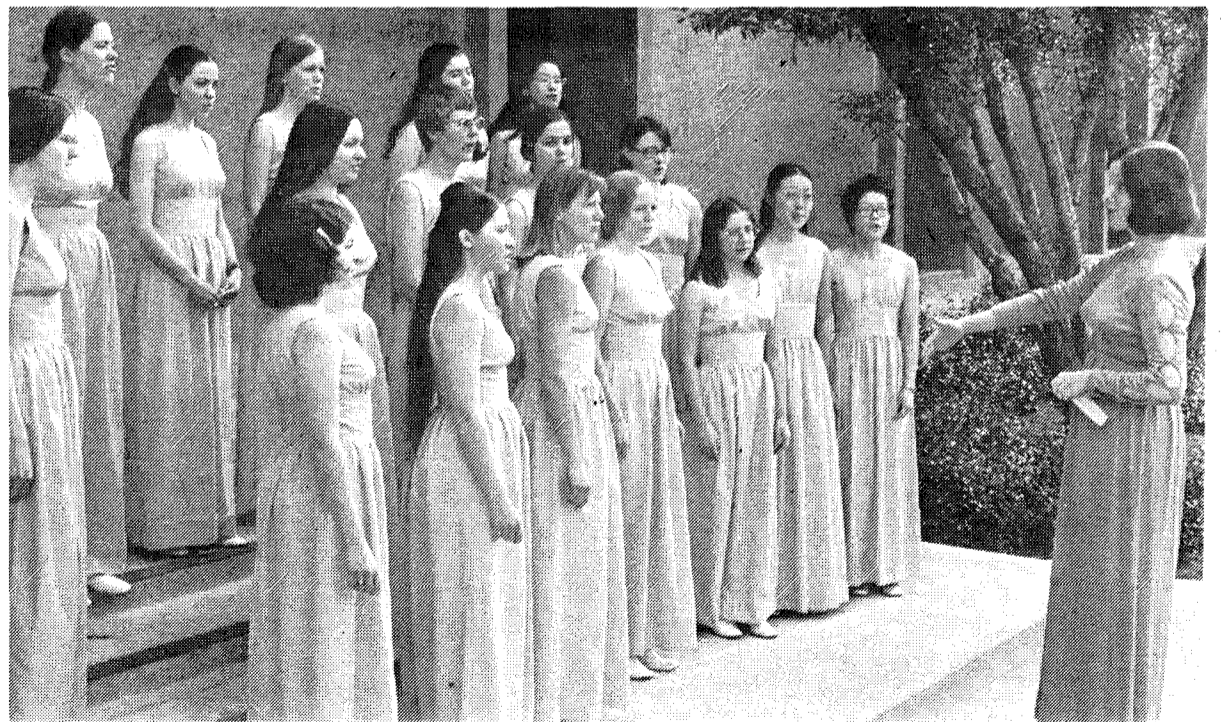
*James Baldwin, University Glee Club New York City*

"IT WAS A BEAUTIFUL, MOVING EXPERIENCE."

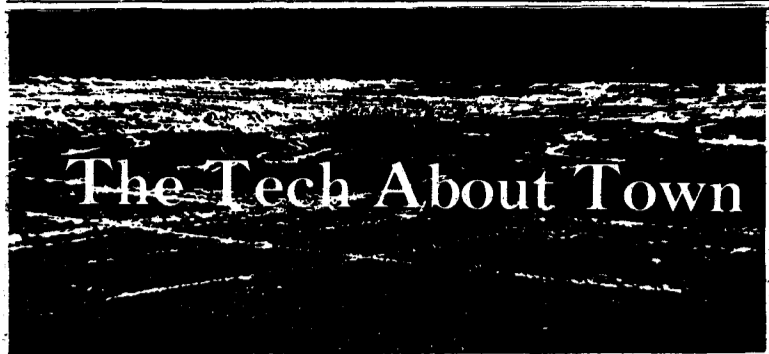
*Richard Stiler, Pasadena STAR NEWS*

"BECOME A TENOR—IT'S A SIMPLE, PAINLESS OPERATION."

*Olaf M. Frodsham, Director, Caltech Glee Club*



**TRYOUTS SEPTEMBER 29 AND 30**



In this column the discerning frosh (this requirement being unnecessary for anyone else) can learn about various entertainments in the area, discounts that can be used to pay for these entertainments, and biased comments of what I think of most of them. If you don't care for my bias, go publish your own column.

As I said, I will deal with entertainment and culture, but as has been proven time and again, man does not turn to his mind until he has dealt with his stomach. So I'd like to say a few words about food before becoming too esoteric. The main word about food is *Tommy's*. To find out more about this most wonderful of phenomena, ask any Techer.

Another place to eat that I recommend quite highly is *Fig Newton's*. This is a new restaurant (opened last May) which claims to be a combination of a quality restaurant and *Bob's*. What this means is an informal atmosphere with moderate prices, but with quality food and a liquor license. The astonishing thing is that it really is. The menu ranges primarily between \$2 and \$5, offering items from club sandwiches to escargot to a good steak. I had steak teriyaki, which was served with crisp steamed bean-sprouts and a host of embellishments. The meal was well prepared, and tasted as if real care had been given. The atmosphere is turn-of-the-century, and the staff is out to

please the customers as well as itself. Enjoy.

Our local culture environment emanates from Beckman Auditorium, where a fine fall schedule has been arranged. The first production is next weekend, Oct. 3, 4, and 5 (both matinee and evening on Saturday). It is the much-acclaimed Houseman production of G.B. Shaw's *Don Juan in Hell* starring Ricardo Montalban, Edward Mulhare, Myrna Loy, and Kurt Kaznar. Rush tickets for this will be on sale at noon of the performance day for only \$1. *Don Juan in Hell* offers some of the cleverest English ever written, as well as some of the most provocative ideas. This is an event you may never be able to repeat, so miss it at your own peril.

Other Beckman events this fall include *Mummenschanz* (mime derived from medieval mummings), Cleo Laine (perhaps the greatest jazz vocalist in the world), Guy Lombardo (this space for rent), Don Ellis (big band with quality), Hersh and Montgomery (ragtime), Polynesia (South Seas dance), and the Festival of Light (the Glee Clubs' Christmas show). I'll have more to say about each of these as they come up.

Southern California has a great deal to offer, too, including concerts (for instance both the Los Angeles Philharmonic and the Pasadena Symphony, Opera (New York City Opera), and ballet. I'll say more about these, too. If you want more

## News Briefs

# Sit on Dirty Dave's Gallery

Baxter Art Gallery has some openings for *paid* gallery sitters this year. Anyone wishing to apply should call Dave Smith's office, x 2195.

## Trundling Classes

Caltech undergraduates can volunteer or work in the Secondary School Science Project commencing Sat. Oct. 5, 1974. Lee F. Browne Director of Secondary School Relations runs the program and needs Tech students to help him conduct classes in most fields of Science and advanced High School math.

immediate information, you will find almost everything you want in Winnett Center.

One thing I do need to talk about is Beckman's Double Discount. This is a special offer for Caltech students, and I know of no comparable offer anywhere. Double Discount is a card purchasable for \$12 which entitles you to \$15 worth of tickets at a 40% discount — a total savings of 52%! With the Double Discount you can see Cleo Laine for as little as \$2.10, or you can rub elbows with the very rich for only \$3.90. Either way, you can't lose. By the way, you can buy Double Discount cards outside Ramo Auditorium on registration day from yours truly, where you can even charge them to your student accounts. We aim to please.

Keep reading this column for useful news, amusing trivia, and the occasional raunch for the really hard-up.

—Chris Harcourt

## Classified Ads

### SERVICES

EXPERT TYPING of science and math dissertations, theses, manuscripts, papers. All scientific fields. IBM Selectric, pica/elite, carbon ribbons. Village Typing (1225 Westwood at Wilshire) 477-4111.

### TRAVEL

EUROPE — ISRAEL — AFRICA Student flights all year round. CONTACT: ISCA, 11687 San Vicente Blvd. No. 4, Los Angeles, CA 90049. Telephone: (213) 826-5669, 826-0955.

LOWEST AIR FARES Europe, Africa, Israel, Asia: one way or round trip. Since 1959: ITC, 323 N. Beverly Dr., Beverly Hills, CA 90210 Ph: (213) 275-8180, 275-8564

### WANTED

TRANSLATORS with scientific training required. All languages and disciplines. Free-lance. Send resume to Box 5456, Santa Barbara, Cal. 93108

Buying or selling something? You, too, can take out an ad in The California Tech! \$1.50 per inch plus \$.25 per extra line for Classifieds. Bring ad copy to the Tech office or phone ext. 2154.

Contact Lee Browne in 212 Dabney or x2207.

## Humanities Credit

The organizational meeting for Poli Sci 140 will be at 2 o'clock on October second, room 206 Baxter. Topics will be related to the international food situation, including those of the tropics and the Common Market countries. Staff and speakers include Ted Scudder, Al Ravenholt, Brewster Grace, John McLin, James Bonner, and Harrison Brown.

## Succoth Party

Thursday, Oct. 3, Caltech Hillel will sponsor a Succoth celebration in the succah. It is located in the garden between East and West Bridge due south of Millikan Refreshments will be served from 4:30 until 6:30 p.m.

## Frosh!

### Your Address Is...

Your Name  
Your House  
Caltech  
Pasadena, CA 91126

## .500 On Policy

Continued from Page Two

houses during times of peak activity there indicates the dangerous potential of this new policy. The Editors feel that this reduction in Health Center services shows a remarkable administrative insensitivity to the importance students give to *continuous* health care and is but another indication of the administration's growing lack of concern for the undergraduates themselves.

—R. Gruner  
Dennis Mallonee  
SMC Sweeney

NOW LOCATED AT OUR NEW LOCATION  
946 E. Colorado (at Mentor)

The Original  
**VENUS**  
adult  
Theater

X Rated

DAILY 11 am to 1 am  
SUNDAY  
12 noon to Midnight

AIR CONDITIONED  
for your comfort  
plenty of free parking



Now Showing:

"My Sister Eileen"

Also playing:

+ XXX-Rated Co-Feature

A completely new show every Tuesday

Special Caltech student rate:

\$3.50 with this ad

964 E. Colorado Blvd. Pasadena

No One Under 18 Admitted



KICK THE PETROLEUM HABIT!  
SWITCH TO 100% SYNTHETIC MOTOR OIL  
ADVANTAGES INCLUDE:

- Easily meets and exceeds all S.A.E. requirements. Rated S.E. 10-40w
- 25,000 miles or 1 year warranty
- Film strength 8 to 10 times greater than petroleum oil
- Users report 10% and more gas mileage increase
- Biodegradable

GET THE WHOLE AMZOIL STORY FROM  
GOLDEN LUBE  
Box 44253  
Panorama City, CA 91412