

The opinions  
expressed in  
this editorial

# California Tech

Associated Students of the California Institute of Technology

are not  
necessarily  
those of  
the authors

Volume LXX

Pasadena, California, Thursday, September 26, 1986

Number 1



"Pat Davis, welcome to Caltech."

## YMCA Goes Coed

Pat Davis has been hired by the Caltech Y to serve in a staff position as Program Intern for the next year. Pat, 23, received her Bachelor's degree in English last year from Immaculate Heart College in Hollywood, where the swingin' nuns teach. She became acquainted with the Caltech Y and a lot of Caltech students while working on the ASCIT Research Project on air Pollution this summer.

President David Schor also has announced several new programming ideas for this year. These will be presented and discussed with interested students at a planning conference to be held in Sierra Madre on October 5 and 6. Here is a "sneak preview."

This year the Y is expanding its Basic Encounter program. Mike Boughton, a Caltech graduate ('55) and currently Associate Director of the Mission Analysis Lab at TRW Systems, has agreed to become a consultant in this area for the Y.

### YMCA Means

Mike helped staff most of the labs held last year by the Y and has worked closely with Dabney House members in their "culture-change" program. This summer he has been at Tech at least once each week in connection with the Research Project.

Other programming will be developed through the three student Y commissions. Public Affairs, co-chaired by Greg Evans (Ru) and Larry Shirley (Ru), will bring political and social figures of interest to campus to talk on the Olive Walk, give informal seminars, and participate in bull sessions with students.

### Yiddish Men's

The commission on Drugs, Art, and Religion (D.A.R.) will try to bring a major artist to campus for several days to live in one of the student houses and talk about his work and his works. The chairman of this group is Guy Smith (Ri).

The Personal Growth and Development commission, headed by David Schor, is responsible for

the Basic Encounter conferences. In addition, this group will plan a series of audience participation talks and demonstrations designed to increase one's psychological insight and growth.

Cinema-Tech, a Y auxiliary, will continue to offer several series of widely acclaimed foreign and domestic films at budget prices.

In line with its tradition of serving as a cluster of resources for student ideas and programs, the Y may serve as a funding agency this year by budgeting groups of students who have generated exciting and meaningful program ideas, who have the enthusiasm and manpower to carry out their ideas, but who need money and other resources to carry them out. This suggested program will be discussed at the Y planning conference after the first week of school.

### Charitable

The "group thing" in California is big and getting bigger. Basic Encounter groups answer the need of students and others to communicate their feelings freely and openly to other people who are struggling to hear and understand them. The Y will help make it possible for all members of the Caltech community to get involved in one or more of these experiences.

Traditional sensitivity group methods will be continued, but new and more advanced experiences will be available to participants with previous experiences. At least five labs, each involving about 25 Teckers and 25 girls from area schools, will be held this year. The first two conferences are tentatively scheduled for October 24-27 and November 28-December 1.

### Association

Both Mike Boughton and Wes Hershey, Executive Director of the Caltech Y, will be available for consulting and aiding any student house or other organization that wants to develop its own Basic Encounter program. Last

(Continued on page 3)

## ARP Conquers Smog?

by Mike Garet

In June, the Associated Students of Caltech received a grant of \$68,250 from the National Air Pollution Control Administration for an in depth study of the pollution problem.

Seventy students arrived in Pasadena from fifteen schools around the country to participate in this summer project in research. During the twelve weeks of the project, basic encounter techniques and seventy man "community meetings" were utilized to build ten research teams.

### Self-directed Research

The project was an experiment in self-directed research. Each team selected its own chairman, who was encouraged to alternate with other members of the group. Each chairman represented his group on the Executive Board, which made broad policy decisions concerning the

general direction of the project. Decision on the nature of the research were left to the individual groups. There were no working hours designated, and sixty hour weeks were normal. By the end of the summer, most of the project had become a family operating on a system of individual trust and responsibility. Each researcher was responsible for his own research as well as in great part for the whole project.

The Cost to the Home group has obtained 2,500 surveys from residents of Mountain View and Glendale, California, two communities similar in most aspects but differing significantly in average ozone levels. A cursory study of the data shows that maintenance costs are higher in Glendale, the smoggy city. Much more computer reduction of data needs to be done to arrive at precise percentage differences.

### Nearly Complete

The Computerized Carpool group has nearly completed a program which matches partici-

pants into carpools on the basis of geographical closeness and personality compatibility. The program recognizes street addresses in over fifty zip-code areas of Los Angeles. The Lockheed Aircraft Company has agreed to support the carpool in their Burbank plant of over 21,000 employees.

The Government and Pressure Groups team has designed an automobile inspection station system for California. If this system were made law, it could reduce air pollution levels by 20%, costing each auto-owner about \$3 for a yearly automotive analysis of his car. They have also written a detailed history of air pollution legislation.

The Photochemistry group has catalogued many pollutants, their reactions, and effects. Using computer techniques, they are beginning to test these reactions against observed results in air chambers.

The Biological Effects of Lead Group has constructed a Lead-

(Continued on page 2)

## Initiation Rules

To the Student Body:

As you may be aware, the Master's Office, the Faculty Committee on Undergraduate Student Houses and the Interhouse Committee have determined to change the nature and spirit of those first few days freshmen spend on our campus. We are going to accentuate the positive, make the freshmen welcome and integrate them into our community without attempting to destroy any of their own individuality. Consequently, "Rotation" will be restored next year. Each entering student will visit the seven student houses and list four which he would be pleased to enter. The houses will, in turn, evaluate the freshman. We hope to make each dinner during "Rotation" an event. Sherry and hors d'oeuvres will be served and the houses will be encouraged to invite guests.

In keeping with the new emphasis, Initiation will be changed. No longer will any harassment of individual freshmen be tolerated. No activity which could conceivably embarrass in any way the most sensitive freshman can be countenanced. It is not our intention to take all the fun out of life or to destroy the favorable aspects of Initiation. But house solidarity and cohesiveness can be achieved more through working together in contests, projects, etc. than by means of even the mildest form of hazing. We are asking you to exercise your imagination to determine a creative Initiation program for your house. The Master's Office will gladly provide trophies, banquets, etc.

We are writing this letter to you, so that there will be no questions about the new policy.

Sincerely yours,  
**Robert A. Huttenback**  
Master of the Student Houses  
**Bill Nichols**, Chairman  
Interhouse Committee

## Tower Woos Youth

The Republican Party kicked off its big drive for voters in this state with Senator John Tower (R-Texas). The Republicans are making a serious effort to garner the young vote. Through a new "Campus Action Program", they are trying to inform the younger generation of the abilities, aspects, and hopes of their party and their candidates running for office this year. Guest speakers of national stature are being imported into this state for the purpose of speaking to college audiences.

Senator Tower's opinions appeared to be frank expressions of his own beliefs, and, where indicated, formal pronouncements of National Republican Policy.

Tower fielded the stock, but ticklish, questions of college

newspapers on the lowering of the voting age, campus disorders, and the involvement of young people in politics. "The matter of the voting age is something that should be left to the individual states," said Tower. He also added that if it appeared on the ballot in his state, he would vote against it. When asked if he had any particular reason for this, he replied, somewhat jokingly, "possibly because I am no longer under 21."

In the opinion of Senator Tower, campus disorders are not a federal problem. They are a problem concerning only the school administrations.

With regard to the appointment of Abe Fortas, the Senator contends that a "more philosophi-

(Continued on page 4)



—photo by Tank

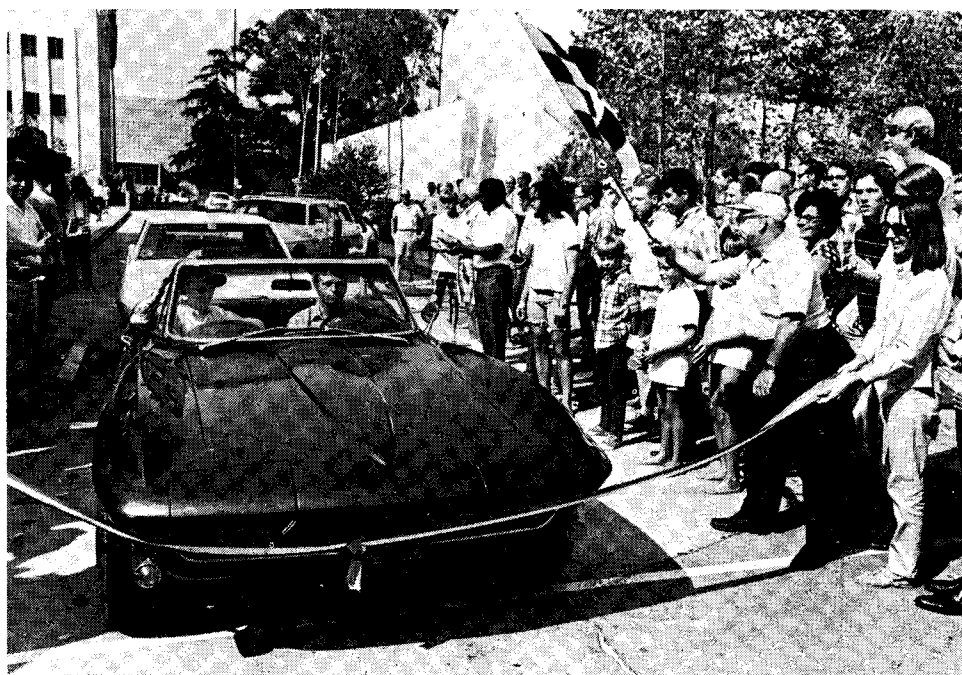
Senator Tower (R.-Texas) demonstrates his gift of gab.

# THE GREAT ELECTRIC CAR RACE



**The Winner!**

Faster than a speeding electron, more powerful than a penlight cell, the "Volswagon" rolls into MIT under its own power. Time was over 200 hours.



**The Loser!**

"Tow, tow, tow your car past the finish line . . ." MIT finished first but lost on penalties.

The long awaited "Great Electric Car Race" between CIT and MIT took place this summer in late August. Both cars took over 200 hours to complete the race, and both needed numerous repairs during the trip. The Caltech "VOLTSWAGON" made the entire 3300 mile journey without being towed once, while the MIT car had to be towed TO several charging points. THE MIT CAR ALSO HAD TO BE TOWED 130 MILES ACROSS THE FINISH LINE. As a result, MIT collected so much penalty time for towing and replacement that CIT was judged the winner of the race by the judges, MOTOR DESIGN MAGAZINE. What follows is a short log of the trip. The California Tech congratulates Wally Rippel and the other Teckers who helped to win the race. The TECH also awards the Purple Heart to Pat Silverthorne for illness in the line of duty.

Caltech

MIT

**Mon., Aug. 26**

9 a.m., fast start, enroute to first charge point, San Bernardino. Took extra long charging. Next charges were in Newberry, Amboy, Needles.

**Mon., Aug. 26**

Noon (EDT) fast start, but battery problems necessitated tows to first several charge points.

**Tues., Aug. 27**

Charged in Kingman, Ariz., Seligman, Ariz. Crew member Pat Silverthorne stricken with mumps. After Seligman, car's armature disintegrated, new motor needed.

**Tues., Aug. 27**

6:45 a.m., just east of Buffalo, N. Y., burned up a transformer, delayed 7 hours. Repaired it, making good time across Ohio.

**Wed., Aug. 28**

3:30 a.m. picked up new motor at Phoenix airport, arrived via TWA flight from New York. Worked all morning putting it in, under way again about noon, charging in Williams, Ariz. Resumed race, on to Flagstaff, Winslow and into New Mexico.

**Wed., Aug. 28**

9:30 a.m., Elkhart, Ind., had small fire, repairs needed. Later found damage worse than first thought, more extensive repairs needed. Delay: 10+ hours. Resumed race at 7 p.m.

**Thurs., Aug. 29**

Reported in Albuquerque, N. M. after good all night run. Car performing well, averaged 43.8 mph in one 62-mi. stretch. In Albuquerque got red-carpet reception. Next reported from Clines Corners, N. M., having battery overheating problems. Covered 860 mi. at this point.

**Thurs., Aug. 29**

Reported in near Springfield, Ill, making good time. Car performing well. Next reported in E. St. Louis, Ill. making progress but having motor heating problems, are cooling it by pouring water over it. M.I.T. car has covered 1,350 mi. at this point.

**Fri., Aug. 30**

Reported in Amarillo, Tex., at 5:30 a.m. Looking for new silicon rectifiers which burned up during charging. Underway again eastbound at 9:30 a.m. Have covered 1,080 mi. Cars are about 500 mi. apart now. With penalties added, MIT is about two hours ahead of Caltech.

**Fri., Aug. 30**

Reported approaching Joplin, Mo., at 9:30 a.m. Had to be towed last 23 mi. to Joplin. Replaced two burned out batteries in Springfield, Mo. Has covered 1,665 mi. more than half the distance.

Next reported in McLean, Tex., recharging. Have covered 1,180 mi. since Monday, been on road 100 hours, plus 2 1/2 hours penalty. Recharging at Weatherford, Okla., when MIT car towed in.

Reported in Tulsa, Okla., recharging. Has covered 1,780 mi. since Monday, been on road 100 hours, plus 22 hours penalty. Towed 10 mi. into Weatherford, Okla., found Caltech entry charging there.

**Sat., Aug. 31**

9 a.m.—reported in Stroud. (Continued on Col. 3)

**Sat., Aug. 31**

Unreported this morning, estimated. (Continued on Col. 4)

Okla., having passed through Oklahoma City. Everything going well, except took 4 hours for long battery charge.

2 p.m.—Charging in Vinita, Oklahoma, about to cross line into Missouri. No problems. Have covered 1,600 mi.

**Sun., Sept. 1**

Reported charging in East St. Louis, Ill., with 1,352 mi. to go to Cambridge, Mass., which should take some 75 hours. Has now covered 1,972 mi.

**Mon., Sept. 2**

Reported in Elkhart, Ind., all in good condition, making good time. Also said team member Pat Silverthorne would rejoin the team in Cleveland, Ohio.

Reported in Toledo, Ohio, making good time between stops.

**Tues., Sept. 3**

Reported doing well in area of Pembroke, N. Y. hoping to finish at Cambridge, Mass., by early Wednesday. May finish as early as 10 a.m. (EDT).

Reported in Clifton Springs, N. (Continued on page 3)

ated should be in area of Amarillo, Tex.

Reported in Vega, Tex., making good progress, have covered 2,113 mi.

**Sun., Sept. 1**

Reported near Flagstaff, Ariz. with only 525 mi. to go to finish. Making good progress, should finish at Caltech in about 24 hours, possibly at 2 or 3 p.m. (PDT) Monday.

(Continued on page 4)

## Notices

**TOTEM MEETING**

Initial meeting of those interested in literary magazine. At Freshman Camp: See Bill Hocker or Al Stein. (Time will be announced.)

**TIRED OF WRITING LONG LETTERS?**

Send your family a subscription to the **California Tech**. Only \$4.00 per year.

**THE ART CLASS**

is coming. Do you like to draw? Would you like to learn? Contact Alain Stein, 213 Page House for details. Watch your house bulletin board for more information.

## EDITORIAL POLICY

The first signature of an editorial indicates the author of that editorial. The following signature, if any, indicates the approval of the other editor. If both editors sign the editorial, that opinion represents the opinion of the California Tech. A dissenting editor may write an editorial opposing the views presented in the main editorial.

In general, column writers have complete freedom as to the content of their columns. No column shall be eliminated from any issue of the Tech solely because of the opinions presented in that column. Col-

umn writers represent only their own opinions and not necessarily the opinions of the California Tech.

The Tech welcomes all letters, whether or not they agree with editorial opinion. All letters must be signed, but the author's name may be withheld from publication on request. Letters are edited (or left out) solely on the basis of space, decency, and the desire to present opinions in proportion to the amount of mail received. As with columns, the opinions stated within letters are not necessarily those of the California Tech.

## Smoggy ARP

(Continued from page 1) free chamber housing three hundred mice. The mice will be fed varying amounts of several heavy metals, and whole body analysis will be performed to determine lethal levels and the ratio of lethal to natural levels.

**Rats Perform**

The Psychological Effects of Ozone group studied the learning performance of rats in ozone and ozone-free environments. They have concluded that a rat will make a significant number of errors in an ozone environment substantially lower than the "alert" level in Los Angeles.

The Community Survey Group has obtained 150 personal interviews with a carefully selected sample of Pasadena residents. They have concluded that the public in this area is greatly uninformed about pollution and has little confidence in the officials dealing with the pollution problem.

The team studying Correlations has obtained thousands of data cards on weather, ozone and other pollutant levels, hospital admissions, and highway accidents. A detailed statistical study must be made of this data, making use of a multiple regression analysis program they have developed.

The Role of the Public team has developed a survey to determine the relative values people place on items related to transportation and air pollution (such as watery eyes, fast acceleration, etc.) This survey may be administered this fall.

**Further Study**

The Cost Benefit Analysis group has outlined a methodology for handling monetary and psychological costs relating to pollution. Further study in this area must wait until data comes in from other groups.

In many teams, the research was not completed in the twelve weeks of the summer project. The National Air Pollution Control Administration has tentatively agreed to extend the unused portion of the summer funds (about \$2000) for fall use. Donations during the summer, including \$1000 from Mrs. Anna Arnold Bing and \$100 from Alan Stein, have provided a substantial bank balance for unexpected administrative costs. In addition, the Institute has agreed to fund up to \$750 for the final report.


The final report will include a detailed description of all research, and in addition will describe the organization and de- (Continued on page 6)

**SKI BOOTS REPAIRED  
VIBRAM SOLES INSTALLED**

**NOVIS SHOE STORE**

**CROSBY SQUARE SHOES FOR MEN  
TENNIS SHOES**

**1216 EAST COLORADO BLVD.  
PASADENA, CALIFORNIA  
SYcamore 6-4971**



**DICK NOVIS  
HAROLD NOVIS**



**Editorial**

**Initiation Means Beginning**

Once again, the freshman are arriving at Caltech, and once again, the editors would like to welcome them to Caltech. Regretably, we cannot be sure that Caltech will welcome the freshman. In the past the freshman have been showered, insulted, embarrassed, and hazed, all in the name of INITIATION. The upperclassmen have shown themselves to be boorish, insulting, snobbish, possibly sadistic, and certainly immature in the name of INITIATION. Past initiations have proven the adage, "Misery loves company", as each entering class has accepted the slings and arrows of the others, secure in the joy of knowing that they will be able to inflict similar wounds on next year's freshmen. After all, what are a few insults, when in one year, one can cause others to suffer as one has suffered?

The editors see no reason why Initiation cannot be pleasant. Affairs has existed far too long at Caltech. Initiation is not defined as embarrassment but as beginning. Do the students of Caltech want this to be the beginning of friendships or the beginning of hatreds? Certainly initiation unifies the freshman class — against the rest of the student body. Initiation creates house spirit — as freshman cheerfully anticipate joining the ranks of those jolly sadists known as the sophomore class.

The editors see no reason why Initiation cannot be pleasant. Why not show the freshmen the pleasant aspects of house life and house spirit instead of treating them as amusements? After all, freshmen are human and are most definitely not second class citizens, as some upperclassmen believe. And as human beings, they deserve to be treated as well as anyone else. The editors are not opposed to the practice of giving freshmen odd jobs such as picking up the morning paper or answering the phone. Everyone

should do his share of work in the houses, but just because freshman do work is no reason to assume they are slaves, to be mistreated or thrown to the upperclass lions.

For all their intelligence, Teckers seem to have yet to learn maturity, as they should have long ago. The new Initiation rules (see page one) not only make the old Initiation style immature but downright foolish. Let this be the year when the age of enlightenment reaches Caltech, and let this be the year when freshman begin by discovering how enjoyable House life can be.

The Editors

Alan Stein

Dave Lewin

**New Bookstore Head Discounts Dim**

by Robert Dullien

Some Teckers may already have noticed that the old manager of the bookstore is gone. Instead, the store has an energetic, new manager in person of Mr. Kenneth Elwell, a graduate of Arizona State, class of '65.

I had the pleasant task of interviewing him. Even though he was quite busy preparing for the approaching invasion of the bookstore he found half an hour for giving me some information about his general plans for the future of the store.

First of all, Elwell is working on making the operation of the bookstore smoother. This involves making minor changes here and there that are barely noticeable by outsiders but make work a great deal easier for the staff.

Large-scale reforms, according to Elwell, will most likely not come this year. He is working right now on putting more and better paperbacks on the shelves.

Also, he is considering the diversification of the magazine selection (Playboy?).

About the question of student discounts on texts, Elwell had little encouraging to say. He explained to me that while the publishers do grant 20 per cent discount on texts to the store, the cost of the operation of the bookstore amounts to about 19.5 per cent of the price of the texts. To avoid losses, all textbooks will have to be sold at the original prices—unless someone secures enough funds to cover the operational expenses of the bookstore (Uncle Sam?).

Elwell is very pleased with what he has experienced and seen at Caltech. To speed up his getting acquainted with your tastes, likes and dislikes, do not hesitate to introduce yourself to him.

**More Winner**

(Continued from page 2)

Y., doing fine, recharging.

Wed., Sept. 4

Arrived at MIT at 7:46 a.m. (EDT) under own power.

**IHC Strikes**

(Continued from page 1)

year Dabney House moved ahead with its own program with the assistance of Mike, Wes, and Burton Housman, former Associate Secretary for the Caltech Y. (Burt left to start the Urban School in the northwest Pasadena ghetto.) Two or three other houses will probably undertake similar programs this year.

Students, including freshmen, who are interested in helping to plan programs in these or other areas, or who wish to attend the planning conference, are encouraged to see the above-named individuals or to talk to someone in the Y office (located on the second floor of Winnett Student Center).

The Caltech Y is an educational and service organization, not strictly a religious one. It is non-sectarian, of course. Its services and membership are open to all members of the Caltech community.

**California Tech**

Published weekly during the school year except during holidays and exams by the Associated Students of the California Institute of Technology. The opinions contained herein are solely those of the newspaper staff.

**Editors:** Dave Lewin, Alan Stein, Editors-in-Chief; Jim Cooper, Editor-in-Limbo; We Need You, Managing; We Need Someone, Copy; Dave Dixon, Sports.

**Staff:** Roger Goodman, Tom Carroll, Charles Creasy, Steven Johnson, Mark Boule, Kevin Savage, Joanie Weber, Jim Blasi, James Wei, John Bean, David Linker, Jim Stone, Bob Dullien, Greg Brock, Larry Westerman, Bob Nnstein, Craig Sarazin.

**Photographers:** Stephen Dashiell, Tank

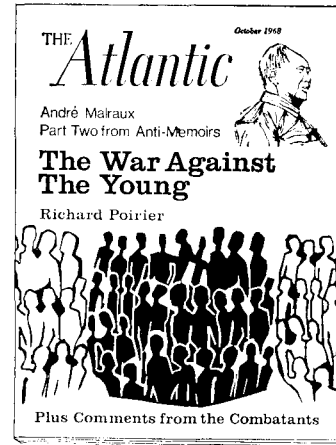
**Business:** Jeff Hecht, Manager; Bob Abarbanel, Circulation Manager.

California Tech, Publication Offices: 1201 E. California Blvd., Pasadena, California, 91109. Second-class postage paid at Pasadena, California. Represented nationally by National Educational Advertising Services, Inc. Subscriptions: \$1.50 per term, \$4.00 per year. Life subscription: \$100.00. Printed by Bickley Printing Co., 25 South Fair Oaks Ave., Pasadena, Calif. Volume LXX, Number 1, Thursday, September 26, 1968.

**PAT'S LIQUORS AND DELICATESSEN**

1072 E. Colorado SY 6-6761  
Open to midnight daily,  
1 a.m. Fri. & Sat.  
Keg Beer Party Supplies

At your newsstand NOW



**A Special Section**

It's a real war, says Richard Poirier, our man at the front, and it threatens the destruction of our best natural resource, the rebelliousness and hopefulness of our young.

"Why we're against the big-gees," and other voices from the battlefield.

... and Nicholas von Hoffman describes the puzzlement of the class of '43.

Caltech students presenting a student body card will receive a 50c reduction in the cost of a normal style haircut at:

**CARL'S CALTECH BARBERS**

906 E. California (Near Lake)  
793-7554

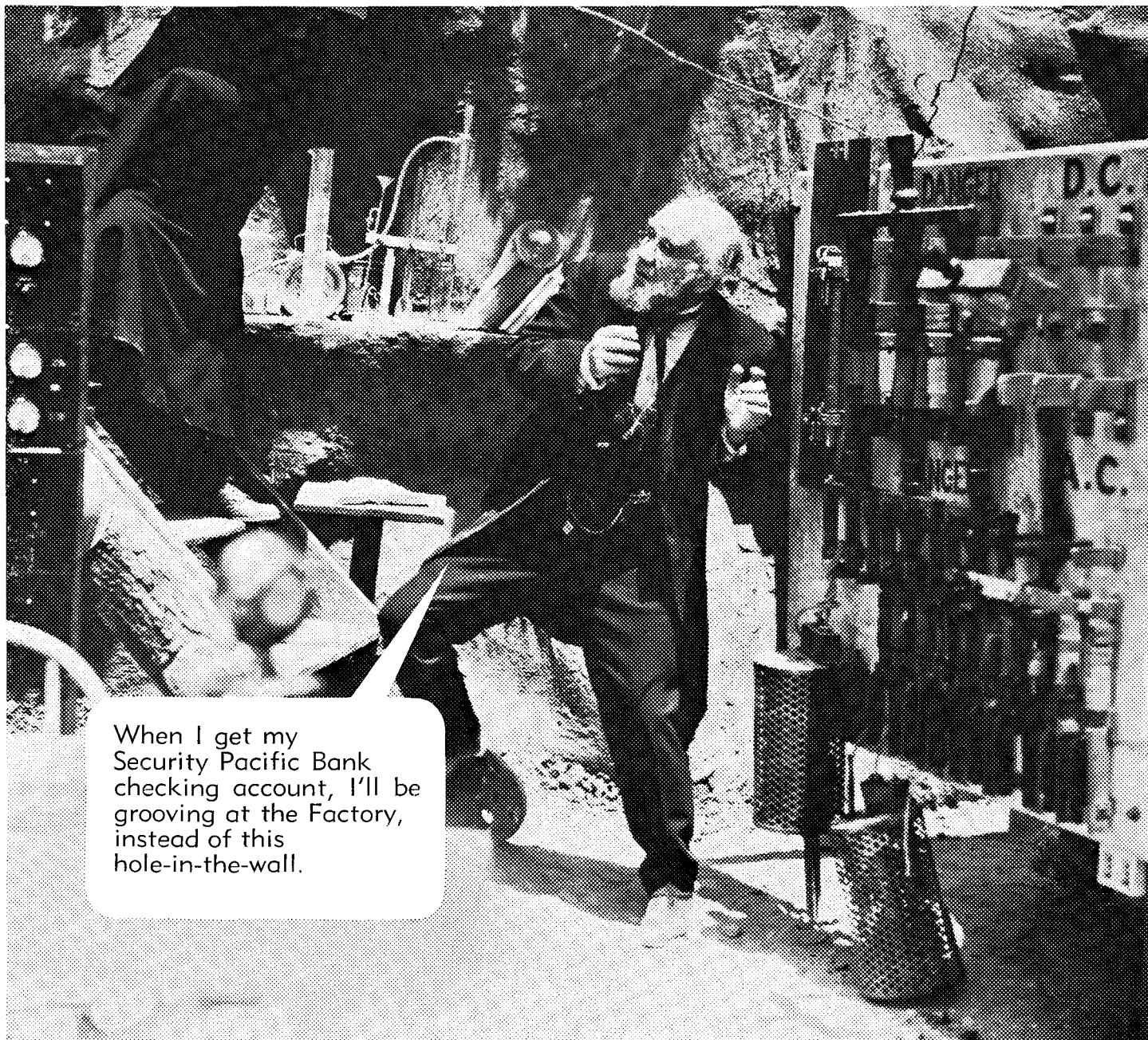
personalized barbers serving Caltech since 1927

(This offer subject to change in state minimum price law.)

**WELCOME CAL-TECH**

10% discount, parking in rear  
**KLECKER HARDWARE**  
(795-8361)

912 E. California, (Near Lake)  
Open 10-6 Monday - Saturday



When I get my Security Pacific Bank checking account, I'll be grooving at the Factory, instead of this hole-in-the-wall.

Another scene from Security Pacific Bank's "Other World" series. We hope you'll explore the world of banking with Security Pacific Bank—the total service bank.

Make your financial partner **SECURITY PACIFIC NATIONAL BANK**



### More Missles

(Continued from page 1)

cal balance" is needed on the Court, that a general election, which is, in essence, a sampling of national public opinion, would be helpful in making the choice of a new Chief Justice or any Associate Justice for that matter. Tower was also dubious about the actual existence of a vacancy at this time on the Court.

Regarding the Nixon-Agnew platform, solutions to the problems of the ghettos, Tower echoed the comments made by Nixon on a recent CBS televised press conference. Among the points of this program are:

- 1) Affect an application of Private Enterprise to the problems of the ghetto.
- 2) A "Black Man as Capitalist" program providing low interest long term loans and tax incentives that will permit the Black Man to initiate and operate his own competitive businesses.

When quizzed on the topic of government participation in the space program, Tower indicated that it would continue at least at the present level, with a possible emphasis on the "Military uses of Outer Space".

Senator Tower is a rare animal in political circles. A Texas Republican, a conservative, he has the gift of being able to speak well on most topics, at length, yet saying as little as he wishes or nothing at all, whatever is to his advantage. This is an Art. If the other Republican speakers that are coming in the near future are nearly as good, they may be one of the more entertaining events in L.A.

### Beckman In The Fall

The Kinetic Art, an international festival of extraordinary new films will start the season at Caltech's Beckman Auditorium next month. A distinguished group of three different programs, comprising some 26 films, representing the newest achievements in creative cinema will be screened on three successive Tuesday evenings at 8:30 p.m. on October 15, 22 and 29.

The fall series includes the versatile Rob Inglis in a modern English version of Chaucer's Canterbury Tales on Friday, October 18. The series also includes on October 26, flamenco guitarist Carlos Montoya on November 1, Korean violinist, Young Uck Kim the National Theatre of the Deaf on November 8 and world famed pianist, Leonard Pennario on December 7.

The traditional Monday evening Caltech Lecture Series will resume this fall; the first lecture will be given by the eminent director of the Huntington Library and Art Gallery, Dr. James Thorpe, on Monday, October 14. All events begin at 8:30 p.m.

Beckman Auditorium will also host the Coleman Chamber Music concerts. The upcoming sixtyfifth season will include such eminent ensembles as the Fine Arts Quartet, the New York Woodwind Quintet, the Duetri Ensemble, the Juilliard Quartet, New York Pro Musica, the Smetana Quartet and the New York String Sextet.

### More Loser

(Continued from page 2)  
Mon., Sept. 2

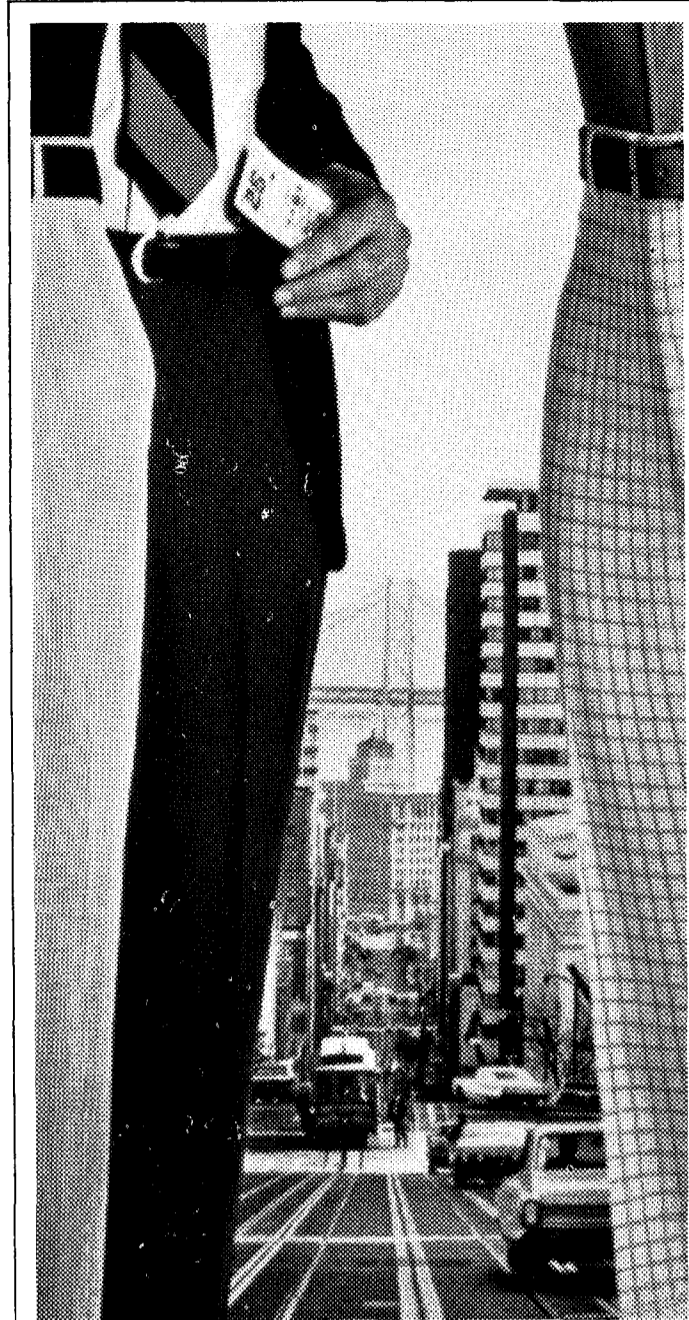
Reported recharging at Newberry, Calif., making good time, expected at Caltech by 5 p.m. (PDT).

Reported outside of Victorville with broken motor; armature disintegrated. Now being towed to Pasadena, plan to bypass charging point in Victorville and San Bernardino. Arrived at Caltech, crossed finish line at 3:26 p.m. (PDT).

### CHAUCER??

Rob Inglis, the Australian actor who has been delighting audiences all over the British Isles with his solo dramatization of **The Canterbury Tales**, will bring his multi-character wizardry to Caltech's Beckman Auditorium in Pasadena on Friday, October 18, at 8:30 p.m. This is the first in the Fall Series of concerts and drama to be presented by the Faculty Committee on Programs.

Inglis is an Australian and boasts basic training as an actor with the Royal Shakespeare Company and the National Theatre. His fourteenth century costume in **The Canterbury Tales** was modelled on Chaucer's own. With modest props, he recreates the pub in Southwark where the Pilgrims rested on their way to the shrine of Thomas a Becket at Canterbury. Their Host proposed a storytelling competition to keep them happy, and these stories have since kept countless others happy as the famed classic, enchanting, bawdy, **Canterbury Tales**.



*In the tradition of Nob Hill.  
But spiced  
with the spirit of the Barbary Coast.*  
**Cambridge Classics  
with Fortrel®**

Cambridge Classics are very San Francisco. Urbane, with clean lines and crisp tailoring. Authentic styling, with up-to-the-minute colors and patterns. Fortrel® polyester and cotton. 14.50 and under. For a list of nearby stores, write Box 2468, South San Francisco, California 94080.

 **cambridge classics**

**CACTUS CASUALS®**

**Cactus Casuals -- of course at --  
Hackett's Men's Shops**  
5 Locations to Serve you

- |  |  |
|--|--|
| <b>Pasadena</b><br>62 S. Lake<br>915 E. California | <b>Arcadia — 1230 S. Baldwin</b><br><b>Alhambra — 16 W. Main</b><br><b>Glendale — 122 N. Brand</b> |
|--|--|
- Formal Rentals for All Occasions —

### T.G.I.F.

The Bank: Friday and Saturday, 8:30 p.m.—John Mayall  
The Bank: Friday and Saturday, 8:00 p.m.—Grateful Dead, Buddy Miles Express, Black Pearl  
UCI, Campus Hall: Friday, 8:30 p.m.—Big Brother and The Holding Company  
Hollywood Bowl: Saturday, 8:30 p.m.—Donovan

# WELCOME STUDENTS

Your

- ★ TEXTBOOKS
- ★ REFERENCE BOOKS
- ★ SCHOOL SUPPLIES

ARE AVAILABLE AT

## CALTECH BOOKSTORE

WINNETT CENTER

Monday — Friday 8:15 - 4:30

**Woodruff's**  
MEN'S STORE • ALLEY SHOP • BOYS' STORE

You will find a  
complete selection of  
Cactus Casuals slacks  
in our Alley Shop.  
Drop in at your  
earliest convenience

**Woodruff's**  
Fine Clothing Since 1929  
24-28 West Main Street  
Alhambra  
ATLantic 2-4144 • CU 3-7766  
OPEN DAILY 9:5-30 FRIDAY TIL 9:00



# Love Foils Hate

By James Blasi

The Free Press Gathering of the Tribes was held last Sunday at Elysian Park, although the park commission denied the permit.

The Park Commission's futile attempt to prevent the gathering on the grounds that it was political in nature was so absurd that no attempt was made by the Los Angeles Police Department to disrupt it for lack of a permit. The appearance of over a dozen rock bands could hardly be construed as political by even the most conservative of courts.

The police department, however, did favor the gathering with the presence of between 50 and 100 riot helmeted police officers who repeatedly tried to provoke the crowd into any act that in the least way could be considered violent. Individuals who had alcoholic beverages were questioned and required to prove they were over 21; if they appeared to be slightly intoxicated, were arrested for drunkenness. John Christopher, who arranged the gathering, was arrested for obstructing a police

officer in the line of duty because he handed a girl a card from the American Civil Liberties Union lawyer as she was being arrested. At various times the police moved through the crowd in mass and, according to an American Civil Liberties Union lawyer, had orders to "club down" anyone who got in the way.

Despite the repeated attempts of the police department the crowd remained peaceful and, with the exception of a few jeers, quiet. The bands who played throughout the day were with few exceptions, quite good and most of the crowd was completely involved with the music. The police department which was there to "preserve law and order" was not needed as everyone observed the park rules, and were happy to be able to use it. It is not obvious to this author why almost 100 policemen were needed to preserve a law and order which existed before they arrived and why it is necessary to harass and provoke a crowd to maintain peacefulness. The police department was obviously against the gathering, although there were probably more happy and friendly people there than in any other part of town. If this action is typical of the Los Angeles Police Department, it would be wise to ask, "Who is guarding our streets at night?"

## CLASSIFIED

### FOR SALE

#### NEW LAMBRETTA SCOOTERS

\$100 off to all Caltechgoodguys

Milne Bros.  
1935 E. Colorado  
795-5153

### WANTED

WANTED BY RECORD CLUB OF AMERICA CAMPUS REPRESENTATIVE TO EARN OVER \$100

Write for information to:  
Mr. Ed Benovy, College Bureau Manager  
Record Club of America, Club Headquarters  
York, Pennsylvania 17401

We cordially invite California Tech students and faculty members to bank with us.

Complete banking services including:

- Automobile Financing
- Bank-By-Mail
- Certificate of Deposit
- Checking Accounts (Bookkeeping by electronic automation)
- Collateral Loans
- Drive-In Banking
- Escrows
- Foreign Banking
- Letters of Credit
- Home Modernization Loans
- Life Insurance Loans
- Money Orders
- Night Depository
- Personal Loans
- Real Estate Loans
- Safe Deposit Boxes
- Savings Accounts
- Travelers Checks
- Trust Services
- U. S. Bonds

Auto Banking Center at Colorado and Catalina Office, 1010 East Colorado and Citizens Commercial Trust & Savings Bank of Pasadena, hours: 9 to 4:30 daily; 9 to 6 Fridays

PASADENA  
Head Office: Colorado and Marengo  
Colorado and Catalina Office: 1010 E. Colorado  
LA CANADA  
La Canada Office: Foothill and Beulah

Citizens Commercial Trust & Savings Bank of Pasadena

MEMBER FEDERAL DEPOSIT INSURANCE CORPORATION MEMBER FEDERAL RESERVE SYSTEM

## Concerts Return

On October 13, at 8:15 p.m. in Dabney Hall on the Caltech campus, in Pasadena, the California Institute of Technology's Division of the Humanities and Social Sciences opens its nineteenth successive season of the Dabney Lounge Chamber Music concerts. These Sunday evening concerts are free and the public is cordially invited.

The music of Pablo Casals, Popper and Zador will be performed by I Cellisti in the opening concert of the series on October 13. Jerome Kessler will conduct the eight cellists and accompanying pianist.

Subsequent concerts will be performed by the Lyric Chamber Ensemble, the Mallory Chamber Soloists, Lee Harpes Harmoniques, the International Piano Quartet, the DiTullio Trio, the Valley String Quartet, and Pacific Woodwind Quintet.

## New Host For Fac. Club

The appointment of Marshall S. Otesa as manager of the Athenaeum was announced recently.

Prior to his coming to Caltech on Sept. 3, Otesa was manager at the La Canada Country Club. He comes to Caltech with a background of experience in club management. His appointment culminates a search conducted by the administration with the Athenaeum House Committee.

Otesa and his wife live in Sylmar and have two daughters who are now in college.

(advertisement)

## MOVIE GUIDE

Esquire Theatre, 2670 E. Colorado, SY 3-6149; "The Best American film of the year" — New York Times; **WILD IN THE STREETS**; co-hit Roman Polanski's hilarious spoof, **THE FEARLESS VAMPIRE KILLERS**.

### STUDENTS,

if you need **HELP** in fulfilling your language requirement - inquire about tutoring services at

**BERLITZ, THE LANGUAGE CENTER**  
170 South Lake Ave.  
Pasadena  
SY 5-5888

# Peter, Paul, and Mary

by Jeff Hecht

The new Peter, Paul, and Mary album, "Late Again," follows the development started in "Album," and continued and better defined in "Album 1700." The orchestration and general sound of "Late Again" is very similar to "Album 1700." It is a very distinct sound—different from other major groups and from their own recordings before "Album." The style borders between folk, rock, and popular or "show" music. The popular elements came into their repertoire between "Album" and "Album 1700" and define the difference.

The orchestration in "Late Again" is well-done. In places, however, it seems to be overdone, and dominate where it should not dominate. There also are many effects attempted with singing in the background, generally not accomplishing much and often detracting from the value of the song. The overall effect tends to lose the real iden-

tity of the group. In place of this is a conglomeration of effects which includes many different sounds, but seems mainly imitative. The country and western influence, particularly, does little good.

Peter, Paul, and Mary still have real gifts, particularly the fullness of their voices. Like "Album 1700," there is no distinct style carrying through "Late Again." It varies from soft ballad style in "Hymn" to a strong, overorchestrated style in "Too Much of Nothing." The overall level of "Late Again" is about the same as that of "Album 1700," but with less variation. None of the songs are outstanding in the manner that some of their earlier songs have been, but neither were any of them very poor. And still, Peter, Paul and Mary are one of the better groups performing. Though their level of performance could be higher, it is still relatively high.

## Beckman to Present Deaf Actors

The National Theater of the Deaf, sponsored by the Caltech Faculty Committee on Programs, will make one of its rare Southern California appearances in Pasadena early next month. The company introduces a new and eloquent concept of total theater embracing mime, high drama, low comedy, sights and sounds from exquisite instruments expressly wrought for them, and a beauty and a clarity of movement that is both inspired and inspiring. A formidable repertoire includes works by Chekhov, Namboku, Richard Sheridan, Federico Garcia Lorca and Blake. The performance at Caltech will take place on Friday, November 8, at 8:30 p.m. in Beckman Auditorium.

Recognition of the splendid work the National Theater of the Deaf is doing comes from high places. It has just been announced that the Vocational Rehabilitation Administration of the Department of Health, Education and Welfare has awarded the company a \$45,000 grant for the production of a one-hour color film on the work of the theater. It will be made by Arden

## Freshmen Receive Scholarships

Seven freshmen entering the California Institute of Technology this fall have been named recipients of Alfred P. Sloan National Scholarships for 1968.

Sloan Foundation scholarships—ranging from honorary \$200 awards up to \$2,600 per year—went to 151 students at 45 institutions across the nation.

Students chosen for the scholarships are selected for academic excellence, participation in the activities of their schools, personal integrity, and potential for leadership. The scholarships are renewable for the full four-year period of undergraduate study for those who maintain high academic standing.

The Caltech freshmen named as recipients were Donald L. Wilson, Parker Dam, Calif.; Daniel J. Rudolph, Fort Collins, Colo.; Samuel E. Wheatley, Winter Park, Fla.; Norman J. Veach, Jr., Idaho Falls, Idaho; David J. Smith, Middleville, N. Y.; Frank C. Porter, Schenectady, N. Y., and Steven S. Watkins, Kettering, Ohio.

The Alfred P. Sloan Foundation, established in 1934, is interested in the support of science, research and education, and has assets of more than \$326.6 million.

Productions. The film is to be completed next month and will have dialogue and subtitles to accommodate both hearing and deaf audiences.

### Are You Missing The Boat?

Tiki Sailing Club has fully equipped racing sailboats. If you'd like to join the Sailing fun (even if you're a novice), call 473-9977.

RESERVED SEATS NOW AT BOX OFFICE OR BY MAIL!

COLUMBIA PICTURES and RASTAR PRODUCTIONS present

BARBRA STREISAND OMAR SHARIF

The WILLIAM WYLER- RAY STARK Production

**FUNNY GIRL**

TECHNICOLOR® PANAVISION®

EXCLUSIVE RESERVED SEAT ENGAGEMENT WORLD FAMOUS EGYPTIAN THEATRE 6712 Hollywood Blvd. • Hollywood • HO. 7-6167

FOR GROUP SALES CALL ED PRUES 462-3355 or 462-3356

TICKETS ALSO ON SALE AT SO. CALIFORNIA MUSIC CO. 637 So. Hill St. ALL MUTUAL TICKET AGENCIES (Phone 627-1248 for nearest location) AT WALLICHS MUSIC CITY STORES, LIBERTY TICKET AGENCIES (Phone 466-3553) and UNITED ARTISTS THEATRES

**NEW PETER, PAUL & MARY!**

*Late Again Peter, Paul & Mary WS 1751*

**W**

WARNER BROS. — SEVEN ARTS, RECORDS INC.

DOUG WESTON'S **Troubadour**

CLOSES SUNDAY singer-songwriter of "Did She Mention My Name."

**GORDON LIGHTFOOT**

Ticket available at: Troubadour box office all Music City Stores all Mutual Agencies

CR. 6-6168  
9081 Santa Monica Blvd. at Doheny

WELCOME TO

# The Campus Barber Shop

On the north side of Vinnett Center west of Chandler Dining Hall

## THREE BARBERS TO SERVE YOU

**Letters**

**Editor:**

Having followed your rag with bated breath ever since the golden days of Karp and Simpson. I eagerly await another year of journalistic sexcellence. Enclosed please find a check for four (4, count'em, 4) hard earned T.A. dollars for another 30 or so weeks of literary enjoyment, climaxing (one hopes) with a Hot THROB-BING Rivet (whatever happened to the National Horse Sheet and the Cold throbbing Screw?)

Not only did you scoop NBC on the National Electrical Putt-Putt Race this past year, but enlightening articles seem to point to the fact that the Cauliflower Tech students are beginning to realize that they can relate to the World and Beauty and Such even before graduation. Three Cheers!

Good luck in another year of irresponsibility, typographical etaoin shrdlurrors, and general incompetence.

Yours in Bokonon,  
William F. Orr

**Tech Carries LIT Review**

During the coming school year, the **California Tech** will carry as a supplement the Chicago Literary Review, published by students at the University of Chicago. The Literary Review is published six times during the school year and once during the summer. It is carried by several college papers as a supplement.

The Literary Review carries reviews of books, movies, records, and even Marvel Comics. There are "campus editors" on the campus of each school carrying the Literary Review, appointed by the staff of the college paper. These campus editors handle reviews, submitting them to the editors in Chicago, who pass ultimate judgment. The **Tech** is looking for someone to assume the position of campus editor for this year—anyone interested please contact Jeff Hecht at the Tech office or in Blacker. Watch for the first issue of the Literary Review in the **Tech** in late October.

**The Old vs. New**

"Trader" Jim Sullivan, an antique car collector, arrived at the Caltech campus 2:00 p.m., Sunday, in his 1912 Pierce-Arrow on his way to Cape Cod, Massachusetts. Sullivan, already 100 miles from Oceanside, California, where he started that Sunday morning, challenged Caltech to a transcontinental car race in which he would pit his gasoline powered Pierce-Arrow against Caltech's "new-fangled" electric car. Sullivan's challenge was not accepted by Caltech; a previous bid against the San Diego Gas and Electric Company, which had developed a liquid gas machine, was also rejected.

Nevertheless, Sullivan will continue across the country in an attempt to better the six and one-half days Caltech took in its recent victory over the Massachusetts Institute of Technology in an electric car race. His planned stops include Caltech, Las Vegas, Salt Lake City, and the MIT campus in Cambridge, Massachusetts. Accompanying Sullivan are Stan Mason, a retired Marine Corps major, and Peter Eiden, a staff writer for the San Diego Union.

Upon arrival at Cape Cod, Sullivan intends to pour a bottle of Pacific water into the Atlantic.

**DuBridge for Rapid Transit**

Four noted Southland leaders in higher education today gave their approval to Proposition A for Rapid Transit on the November 5 ballot as a way "to make educational and cultural activities on their campuses available to all."

The four are Chancellor Charles E. Young of UCLA, Dr. Norman Topping of USC, Dr. Lee A. DuBridge of Caltech, and Father Charles S. Casassa of Loyola, all presidents of their respective institutions.

Proposition A will provide \$2.5 billion through a 1/2 of 1% sales tax hike in the County to build an 89-mile, high-speed rail system, with 300 miles of feeder and connecting bus lines.

"Today many underprivileged young people find attendance at one of our universities a difficult chore either because of lack of personal transportation or the inadequacy of public service," the educators said.

"We are certain that with the passage of Proposition A and construction of the rapid transit system, this 'roadblock' to higher education for our young men and women will be removed."

According to plans of the system, rapid transit stations would be located at Exposition Park, next to USC; at Westwood, adjoining UCLA; in Westchester, not far from Loyola's Del Rey campus; and through the San Gabriel Valley, with connecting bus lines directly to Pasadena.

The four educators said that the rapid transit system would also make sports activities on some campuses, and cultural events "more accessible to the general public."

"We have many free and nominally priced events open to the public which certainly would attract larger audiences if people had the convenience of comfortable, high-speed travel and no parking problems," the school presidents said.

"Simply from a standpoint of community progress this bond issue is a must. With the outstanding cultural, business, and scientific complexes that have gone into the Los Angeles area in the past two decades, it is imperative that the transit system be completely modernized so that everyone can take advantage of them," the four men said.

Crellin, ext. 2165. There is an unlimited amount of research that can be done on both existing task areas and any other subject relating to air pollution. Several of the girls who participated in the project during the summer will be staying at Caltech this fall as Student Research Associates, and most of the task groups have one or two people continuing work. For almost any research, credit is available in reading courses in various options.

**Smoggy ARP**

(Continued from page 2)

velopment of the project as an experiment in student research. It should be available near the middle of November for \$5.00 a copy. Library copies will be given to each of the student houses.

**New Headquarters**

The new headquarters for the ASCIT Research Project is 67

**Watch This Space for Sports**

PAPERBACKS  
by the THOUSANDS  
EASY TO FIND  
the one you need at  
VROMAN'S

695 E COLORADO BLVD PASADENA  
449 5320 681-6669

**Catas-trophe Strikes**

Pasadena, Calif. 91109 (ODIW)--At precisely 2:30 a.m., Wednesday, September 25, 1968, the California Tech ran out of news releases. Therefore . . .

**Mercurial Communique**

By James Blasi

The Quicksilver Messenger Service concert last Friday night at The Bank was an excellent example of good San Francisco acid rock. Quicksilver played two sets of about one hour each with Sons of Champlin and Love Exchange playing the remainder of the concert.

John Cipollina played an excellent, but somewhat less enthusiastic lead than normal for Quicksilver. Most of the inspiration and true quality in the

group was supplied by Gary Duncan. His guitar solos in Smokestack Lightning and other numbers produced an almost ecstatic reaction from the audience and seemed to pull the rest of the group into the performance. Greg Elmore provided an excellent drum solo and David Greiberg's bass supplied a solid background throughout the concert.

Overall, Quicksilver Messenger Service is a group which is better if heard live. The album, in comparison, lacks the far out inspiration that comes with their live performances, and seems to place tighter reigns on their creativity. So, if you liked their album, you'll love them in person.

FOR YOUR MUSIC SUPPLIES

**MELVIN MUSIC and GIFT SHOP**

Directly north of campus — 1298 E. Colorado between Halliston and Chester

Music boxes, costume jewelry, for that special gift. crepe paper streamers for party decorating

OPEN 10 am to 6 pm 796-4917

UNDERGRADS GRADS FACULTY STAFF

**SING**

**AT CALTECH**

**The Glee Club  
The Chorale  
Chamber Singer  
Varsity Quartet**

"Undoubtedly the most exciting collegiate choral program in the whole nation" — Roger Wagner

**Tryouts**

Glee Club Office — Fleming Basement

Sunday, September 29 4-6 p.m. 6:45-8 p.m.  
Monday, September 30 3-6 p.m. 7-9 p.m.

**First Rehearsal**

Monday, September 30 8 pm. Culbertson Hall