

# The California Tech

California Institute of Technology

Volume LIX

Pasadena, California, Thursday, March 13, 1958

Number 20



"Ricketts Housemother", Rosa as Dave Leeson, Rosa's fiance, Riordon, bestows victor's award looks approvingly on (from on Rowdy director Stan Sajdera Boston.)

## Sajdera Leads Rowdies To Fifth Straight Sing Victory

Ricketts House made it five years in a row by winning the Interhouse Sing again last Thursday. Their score of 275 out of 300 points gave them the victory.

Blacker's 240 point score was just enough to give them second place. Dabney collected 239 points for their second one point loss in as many years. Fleming's 217 was good for fourth place.

Tech's renowned Glee Club topped off the evening with their first concert before the student body this year.

Freshman Stan Sajdera earned himself a job for the next three years by leading the Rowdies to their win. Bob Johnstone directed Blacker while Al Forsythe led the Darbs.

Fleming's director, Ted Oakberg, contributed his talents also to the Glee Club's quartet. Ron Arps, Urban Kern and Joe Lingerefelt completed the group.

Climax of the affair came when the announcement of Ricketts' victory was made and the victors carried Sajdera off to a celebration that lasted many hours.

## Announcements

### WHO CALLS?

The Institute telephone staff informed the California Tech that night line extensions are being used for person-to-person toll calls to the campus of the Associated Colleges in Claremont. No extension number or name is being given to the operator, and the Institute cannot transfer charges. The staff requests that the person making the calls identify himself.

### LOST WEEKEND

ASCIT Social Chairman Ken Dinwiddie announced the date of the Lost Weekend as May 9-11. The event will include the annual Spring Concert by the Caltech Glee Club.

### PROM

The annual Junior-Senior Prom will be held concurrently with the Frosh-Soph Hop on the night of May 17, announced junior president Jerry Arenson.

### TECH STAFF

Openings still remain on the Tech staff in the fields of news and sportswriting. See Mike Milder, Ricketts 9.

## ACS Picks New Officers

New officers were elected by the Caltech branch of the American Chemical Society at a meeting on March 6. The new officers are: President, Gary Zimmerman; Vice-President, Arnold Goldford; Secretary, Jim Farmer; Treasurer, Phil Brooks; Senior Representative, Bob Harmon; Junior Representative, Pete Rony.

Freshmen are invited to the next meeting which will be held shortly after freshmen choose their options third term. A sophomore representative will be picked at that time.

# India's Vice President Tops Y Leaders Program

## Webmen Capture Relays

The Caltech swimming squad outpaddled Pomona by one point to take the crown at the Redlands Conference Relays last week.

### Five Teams

The five league schools were represented at the relays, and the Techmen edged second place Pomona and held a 26-point lead over third place Redlands.

Taking first place points were the medley sprint relay and breast strike-butterfly relay teams; Smoak, Owings, Blandford, and Brown raced in the medley relay, and Pailthorp, Owings, Blandford, and Rees swam in the breast stroke-butterfly event.

### Other Scorers

Pete Rony and Bill McLennan took second and third in diving, and the back stroke and distance medley relay squads garnered seconds. The sprint relay team finished fourth to round out the Caltech scoring.

The swimming squad meets P.C.C. tomorrow in its next dual meet.

Final score: Caltech 63, Pomona 62, Redlands 37, Whittier 31, Occidental 23.

Frosh: Pomona 50, Redlands 22, Occidental 40, Caltech 32.

## Radhakrishnan Schedules 3-Day Visit; Plans Philosophical, Political Addresses

Dr. Sarvepalli Radhakrishnan, Vice-President of India and noted philosopher, will visit Caltech on April 2, 3, and 4 as the highlight of this year's Y "Leaders of America" program. His schedule, which will include two major addresses, will be built around the two areas with which he is most concerned, philosophy and politics.

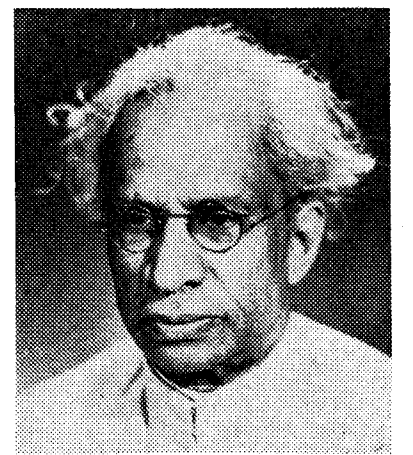
The two addresses, to be delivered Wednesday and Thursday evenings, April 2 and 3, will probably concern India's role in international affairs and Indian philosophy and religion, respectively.

The remainder of his stay at Tech will probably include two addresses at the Athenaeum and numerous smaller sessions at which students will be able to talk informally with him.

One unusual feature of his visit will be one or more special meetings with a group of ten students who agree beforehand to read one or more pertinent books on Hinduism over spring vacation. Those interested should sign up at the Y office. A number of such books are on reserve in the Y office.

Radhakrishnan is one of India's most erudite and distinguished international figures. While he may be remembered longer for his effect on Hinduism than for his political activities, he was ranked by Dr. Phillips Talbot, American Universities Field Staff Director, as the third or fourth most influential man in Indian politics today. His principal task as Vice-President is to preside over the upper house of the Indian legislature, although he is also known to be a close adviser to Prime Minister Nehru.

Previous to his election as Vice-President in 1952, he had served as India's first Ambassador to the Soviet Union for three years (1949-52). From 1946 to 1949 he served as leader of the



ASCIT photo  
Dr. Sarvepalli Radhakrishnan

Indian delegation to UNESCO, and was elected chairman of that organization in 1949. Most of his pre-war duties were in the academic field. Besides numerous lecturing assignments, he served as Spalding Professor of Eastern Religions and Ethics at Oxford and as Vice-Chancellor (and effective head) of Benares Hindu University.

Radhakrishnan, at 70, has written a dozen major works. Perhaps some of the most significant of these have included new interpretations of the basic conceptions of Hinduism, including *Maya* (illusion) and *Karma* (the belief that each man is bound to an endless series of reincarnated lives).

The Vice-President's visit to Tech is part of a three week tour of America, during which he will deliver addresses at eight major universities, including Harvard, Princeton, and Columbia. Tech, however, is the only school at which he plans to spend more than one day. His visit here is being planned by a committee composed of John Lango (Chairman), Al Carlin, Tom Jovin, Bob Lange, Gene Robkin, Lou Toth, Phil Thacher, Bruce Ulrich, and Jim Weaver.

## Applications Due April 7 For ExComm, Big T, Tech Posts

The ASCIT Board of Directors will accept applications for positions on the newly-created Executive Committee, as well as for the Editor and Business Manager of the Big T, and Business Manager of the California Tech until April 7. Students to fill the positions will be named by the BOD on April 14.

Executive Committee candidates are asked to submit written applications to Michael Godfrey (G box in Ricketts). People interested in the publications positions should apply to Dave Spencer (S box in Fleming). No restriction has been made concerning the form of the written application nor the number of positions for which one person may apply.

Every candidate for an ExComm position will be interviewed individually by the existing ExComm members (ASCIT President, Vice-President, Treasurer and Secretary), following the receipt of his application. Publications candidates will be interviewed by a committee consisting of the present office holders, the ASCIT business manager, and other members of the BOD.

Other appointive offices will be filled by the BOD through a similar application-interview process later in the spring term. These include Election Committee Chairman, Editor of the Little T, Head Yell Leader, Chairman of the ASCIT Photo Division, Chairman of the Instituters, and Counselors for Frosh Camp.

## TBPi Names New Members

The California Beta Chapter of Tau Beta Pi, the sole national engineering honor society on campus, held its semi-annual initiation and banquet last Sunday and initiated the following men as new members: Berken Chang, Bill Klement, Wolfgang Knauss, Vladimir Baicher, Dick Baugh, Bob Harmon, Dick Johnson, Walt Johnson and Bob Lange.

Tau Beta Pi, which can elect scientists as well as engineers at Caltech, chooses its members on the basis of high scholastic standing, character and extracurricular interest.

## Norman Vincent Efron

# Spiritual Counselor Puts In Final Word

By Brad Efron

I almost hate to mention this, but next week is finals time again. Second term finals are particularly charming; to quote a poetic undergrad:

The year's at the spring  
And day's at the morn;  
Morning's at seven;  
The hill-side's dew-pearled;

The lark's on the wing,  
The snail's on the thorn;  
Finals tomorrow,  
I wish I were dead.

This is really a wrong attitude. Unless you're one of those rare

people who can hemorrhage at will, you **have** to take finals. Face up to it, old fellow. Finals next week. There, that wasn't so bad, was it? Finals next week. Ho! Ho! Ho.

One of the big causes of finals anxiety (Crampis Finale, to use the medical term) is the mystery surrounding the subject (I mean the subject of finals, not the finals' subjects themselves, though this meaning has significance, too), Norman Vincent Peale doesn't offer any handy pamphlets on "How to Pray Your Way to Intellectual Con-

quest." Arthur Murray doesn't advertise a "Magic Step for Finals," with little black feet and white feet running wild. Even the Reader's Digest fails to print an inspiring article on "How I Finalled My Way From Spinal Meningitis To the Presidency of My Stamp Club." The whole subject is a sadly neglected one.

So, anyway, cheer up, cheer up. To quote another old proverb, "Look to your left, look to your right. Both of these guys want to cut your throat next week."

# Tech Reporter Visits MIT

## A Report on Student Life, Academics at Mass Tech

By Dave Leeson

The Massachusetts Institute of Technology resembles Caltech in many more ways than just the name, we found last week in a visit to the Boston area.

Student life and student government are strikingly similar, as are athletics and study attitudes. There are some large differences in campus architecture and in community prestige, as well as in overall size and in the number of women undergraduates.

### Student Government

The MIT student government is headed by the Institute Committee (InsComm), which is composed of 11 (recently 20) elected officers, and the Executive Committee, which closely resembles our recently established ExComm. The InsComm represents the 3700 undergraduates, among them 70 women comprising the Associated Women Students.

We sat in at the last meeting of the outgoing InsComm, which meets every Thursday, and later had coffee with several of the InsComm members, among them outgoing president Arnie Amstutz and newly-elected president Gerry Stephenson.

### \$40,000 Budget

The student government has a large number of committees, among them an activities board, a finance committee, the dormitory committee, and the Student Committee on Educational Policies. The yearly budget is in the neighborhood of \$40,000, which is received from the Institute out of tuition payments. The majority of the officers are Econ and Business Administration majors. The MIT student body maintains an office, complete with secretary, and has had one for quite some time.

### 500-Man Dorms

Student life is centered in both the dormitories and in a large number of fraternities. The dormitories consist of about 500 men, with about 100 on each floor. Each dorm has an administration much the same as our student house Executive Committees. The dorms are open to all classes. Their large size eliminates any of the esprit de corps found in our houses, according to several men we talked with. The fraternities are much smaller, consisting of 50 men on the average. Fraternity life there is more like our student house life, but the intense rivalry is absent, perhaps due to the large number of groups.

### The Plant

The campus layout is consider-

ably different from that found here; all of the buildings form one great interconnected structure, thus permitting easy passage from one building to another. The campus is about three times the size of the Caltech campus, and is situated along the bank of the Charles River in Cambridge. The "main street" of Cambridge, Massachusetts Ave. (referred to as Mass Ave.) runs through the center of campus to the river and across the Harvard Bridge. The athletic center consists of several large field houses, which are necessary to supplant the outdoor fields for cold weather practice. The dorms are located at the extreme ends of the campus, while many of the fraternities are just across the river in Brookline.

### The Boston Community

The area is considerably more cosmopolitan than the Pasadena area, with Harvard, Radcliffe, and Boston Universities in the immediate vicinity. The Insti-

tute itself is considerably older than Caltech, having been founded in 1861.

MIT enjoys tremendous prestige in the Boston area. An example of the extent of this prestige is the fact that a recent Student Committee on Educational Policies discussion was attended by the editors of the Christian Science Monitor and the two large metropolitan dailies. It would seem that the prestige enjoyed by MIT is more than worthy of our envy; Caltech would do well to earn similar prestige in the Los Angeles area.

### Curriculum Differences

The courses offered at MIT differ in many respects from those offered here. Due to the much larger size there is a greater selection of courses and options than is found here. In return for his \$1300 tuition, the MIT student receives an education based on much the same basic policy as we find here at Caltech, but on the average the MIT student specializes sooner and reaches more advanced courses earlier. There is a notable lack of useless material in the engineering courses, which would

explain some of the difference. MIT sophomores, for example, take the equivalent of our AM 15 and Ph 106 and Ph 107, using more advanced texts than we find here in their upper division courses. Study habits seem to be similar, with class attendance optional. Homework is seldom graded, with the premium being placed on test work rather than day to day work.

### The Spice

MIT liquor rules are far more relaxed than here, with liquor available freely in such places as the offices of The Tech, counterpart of The California Tech. Women rules are very similar, with rooms open until 10:00 p.m. weekdays and 1:00 a.m. on weekends. The 70 female undergraduates add a bit of spice to MIT life.

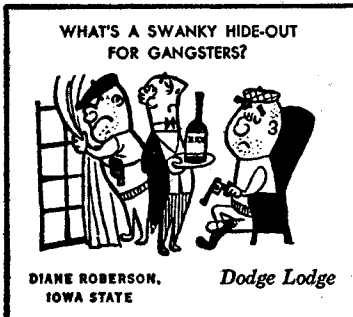
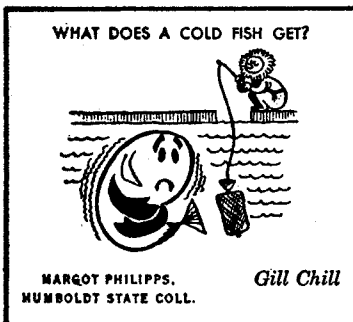
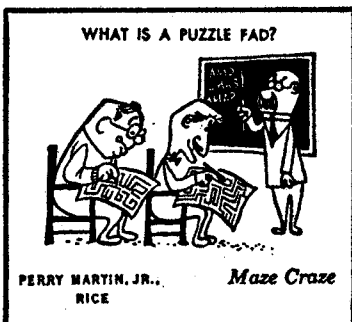
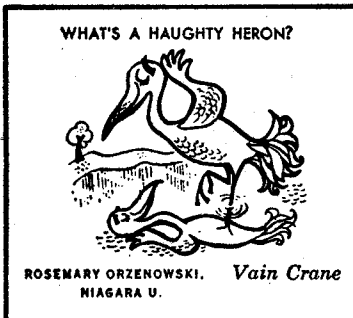
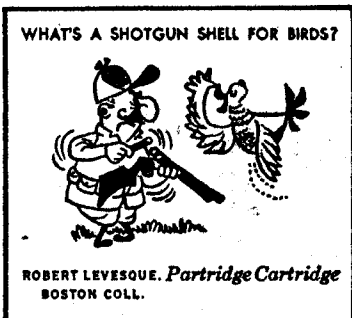
The MIT student body officers expresses a great interest in establishing better communication between our two similar student bodies, and steps are presently being taken at both ends to bring about this communication. The two student bodies apparently have many similar problems, and similar untroubled areas, and it was felt by all that increased contact between MIT and Caltech on the student level would result in the general improvement of both institutions.

## Finals Schedule

- Courses—Section—Time, Room
- Ae 101b—A4(3)—T1, 264B
- Ae 102b—A4(3)—W1, 202Gu
- Ae 103b—T8, 202G
- Ae 107b—W1, 237Gu
- Ae 110b—W8, 202Gu
- Ae 204b—T1, 202Gu
- Ae 207b—T1, 237Gu
- AM 4a—Housner—W8, 301E Jones—W8, 08E
- AM 5b—AC4F4—W8, 155A
- AM 15b—Moise—M8, 202Gu Kubota—M8, 208E McLaughlin—M8, 08E
- AM 101b—M8, 202E
- AM 110b—M1, 208E
- AM 115a—Fraenkel—T1, 08E Franklin—T1, 206E
- AM 115b—M8, 206E
- AM 125b—T1, 151Cr
- AM 150b—M1, 301E
- Bi 1—Sophs—T1, 119K-130Ch
- Bi 20—L3—M8, 101-326K
- Bi 107a—L4—W1, 234K
- Bi 115—L4—T1, 234K
- Bi 116b—L4—M8, 234K
- Bi 241b—T8, 234K
- Mh 1b—Frosh—T1, 22G-155A
- Ch 13b—E4—T8, 157Cr
- Ch 24b—K3(1)—M1, 157Cr
- Ch 26a—E4F4—T1, 157Cr
- Ch 27b—E4—W8, 109M
- Ch 41b—A11—M1, 22G

(Continued on page 6)

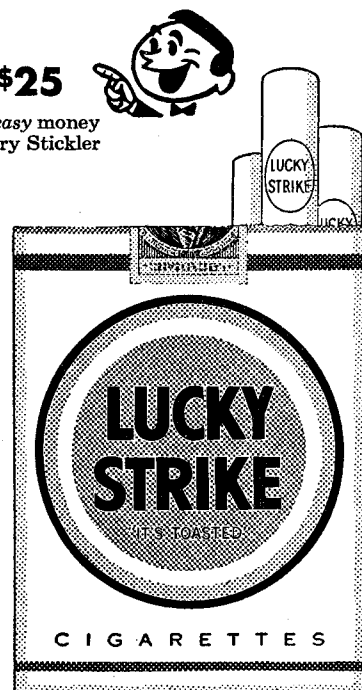
# Sticklers!



**BOO-BOOS** are a clown's best friend. The clown in question has a penchant for shining his shoes with molasses, arguing with elephants and diving into wet sponges. But he makes no mistake when it comes to choosing a cigarette. He picks the one that tastes best. He puts his money on the only one that's all fine, light, good-tasting tobacco, toasted to taste even better. He selects (The suspense is unbearable.) Lucky Strike! All of which makes him a *Brainy Zany!* Quit clowning yourself—get Luckies right now!

### STUDENTS! MAKE \$25

Do you like to shirk work? Here's some easy money—start Stickling! We'll pay \$25 for every Stickler we print—and for hundreds more that never get used. Sticklers are simple riddles with two-word rhyming answers. Both words must have the same number of syllables. (Don't do drawings.) Send your Sticklers with your name, address, college and class to Happy-Joe-Lucky, Box 67A, Mt. Vernon, N. Y.



Welcome!  
**CAMPUS BARBER SHOP**  
 in the Old Dorm  
 Hours: 8-5:30 Price: \$1.50  
 Phone Ext. 567  
 Two Barbers Every Day

REAL ITALIAN ATMOSPHERE  
 ORIGINAL  
*Little Tony's*  
 ITALIAN RESTAURANT  
 2254-56 E. Colorado Street  
 SY 3-1340  
 Pizza Spaghetti Cocktails  
 New . . . Parking in Rear

## LIGHT UP A *light* SMOKE - LIGHT UP A LUCKY!

Product of The American Tobacco Company - "Tobacco is our middle name"



# The California Tech

Associated Collegiate Press honor rating: First Class  
 Editor—Bob Walsh  
**EDITORIAL BOARD**  
 Dave Leeson (Executive), Mike Milder (News),  
 Howard Weisberg (Feature), Jim Wilkinson (Sports)

**ASSISTANT EDITORS**

Cleve Moler (Copy), Dave Singmaster (Sports), John Todoroff (News)  
**REPORTERS**  
 Bob Blandford, Bill Bauer, Al Carlin, Ken Casey, Eli Chernow, Frank Childs, Larry  
 Crissman, Bob Eglinton, Ford Holtzman, Lloyd Kamins, Hal Morris, Bob Norton,  
 Kirk Polson, Rolf Richter, Dave Spencer, Louis Stansby, Phil Thacher, Lance Wallace,  
 Joel Yellin, Wallace Yerbovsky  
**Art**—Bruce Allesina, Ted Bate  
**Photography**—ASCIT Photo  
**Business Manager**—Dave Leeson  
**Circulation Manager**—Eldridge Moores  
 Entered as second-class matter November 22, 1947, at the post-office in Pasadena,  
 California, under the act of March 3, 1879.

# Secretary's Report

BOD Meeting—March 10

## SELECTION OF EXCOMM MEMBERS AND OTHER APPOINTIVE OFFICERS

The new appointed offices will be filled according to the procedure described on page 1 of this issue. It was felt that writ-

ten applications and personal interviews with the candidates would allow for more efficient selection. Recommendations will be made to the BOD as a whole by committees composed of past office-holders and indicated ASCIT officers. For example, the applicants for Head Yell Leader and the ASCIT Athletic Manager and Activities Chairman; applicants for California Tech Business Manager will be considered by the Tech editor and the ASCIT Business Manager.

## JUNIOR-SENIOR PROM

Date: May 17. Place: Ambassador Hotel.

## BUDGET

Organizations subsidized by ASCIT should attempt to submit their proposed budgets for the ensuing year by the first BOD meeting of spring term, i.e., April 7.

Tom Jovin  
 ASCIT Secretary

# News

## Soviet Proposal Rejected

Russia's well-publicized proposal for a pre-Summit foreign ministers' meeting was found so restricted that both President Eisenhower and Secretary of State Dulles felt there was no hope of progress at such a discussion. Russia had requested that the ministers list only the members, place, time and agenda for the conference; she made no allowance for a preliminary settlement of issues.

Britain agreed with the United States on the rejection of the Soviet conditions. Russian proposals were simultaneously squelched on another front as West Germany refused to consider a peace treaty without unification with East Germany.

## French African Plan Passed

Premier Gaillard of France succeeded in passing a bill through the National Assembly which would provide economic and military integration for North Africa even though the Algerian rebels had already rejected the idea.

The bill needs the support of Algeria, Tunisia and Morocco, who appreciate the offer of a share in Sahara oil developments but will not act while France fights in Algeria.

Gaillard had just previously won a vote to increase the military budget for Algeria and cut it elsewhere.

Meanwhile, President Bourguiba of Tunisia continued to demand complete withdrawal of French troops from the country despite the mediation efforts of Great Britain and the United States. Bourguiba himself is pro-West, but many of his people are attracted to Nasser and his nationalism.

## Arab Republics

President Nasser appointed an Egyptian-dominated cabinet in Cairo and then proceeded to launch a propaganda attack against King Saud of Saudi Arabia. Saud holds the balance of power between Nasser's United Arab Republic and Faisal's Arab Federation and was accused of plotting Nasser's assassination.

(Continued on page 6)

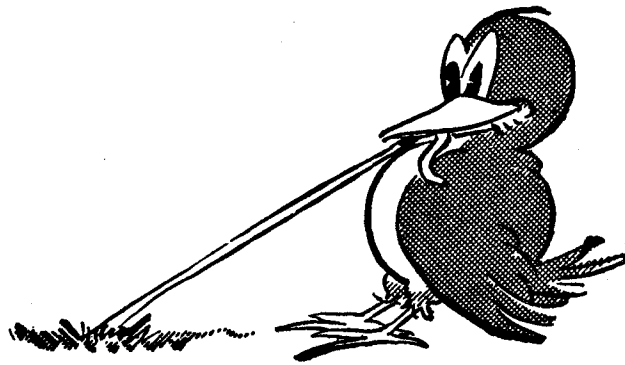
## — ENGINEERS —

Unlimited opportunity

awaits you in

LOS ANGELES

The City of the Future



Civil

Electrical

Sanitary Engineers

are needed for the challenging work of planning, designing, building, and operating one of the largest water and electric systems in the world.

Our engineering representative will be on campus

Thursday, March 13, 1958

Arrange with the Placement Office for an interview appointment.

CITY OF LOS ANGELES

Department of Water and Power



RICHARD MONTMEAT is a 1947 Industrial Design Graduate of Pratt Institute, Brooklyn, New York. He joined General Electric's Television Receiver Department in 1948.

## "A company that plans far ahead gives me the chance to work out my future"

"Pleasing design is no accident," says 32-year-old TV set designer Richard Montmeat. "It takes creative planning. At General Electric, we're constantly developing new product designs — including some for products which won't be on the market for several years. Ever since joining General Electric, I've had the opportunity and challenge of working toward the designs of the future. As I see it, a company which plans ahead gives me the chance to work out my own future, too."

The creative accomplishments of Richard Montmeat have already brought him widespread recognition. He was awarded design patents in 1950 and 1955; he won the Industrial Designers Institute Award in 1955; and his design for the 1958 General Electric 17-inch portable television receiver was se-

lected for showing in an international design exposition in Milan, Italy.

Progress in pleasing design — making appliances more enjoyable to own and use — is an important factor in our nation's growing use of electricity and in our constantly rising level of living. Planning now to satisfy future customers is important not only to the continued growth of the electrical industry, but to individual progress as well. Opportunity for long-range planning is part of the climate for self-development which is provided for General Electric's more than 29,000 college-graduate employees.

Progress Is Our Most Important Product

GENERAL  ELECTRIC

## STATION WAGON SHOE REPAIR

All types of Shoe Repair

Complete Selection of U.S. Keds

920 E. California, near Lake

SY 2-9787

Bring this ad with you for repair discount — save 10%

## Fisher's

RESTAURANT and COFFEE SHOP

3589 E. Colorado St.

A Tech Favorite

Since 1947

Open 7:00 a.m. to 1:00 p.m.

7 Days a Week

We Highly Recommend

CARL'S CALTECH BARBERS

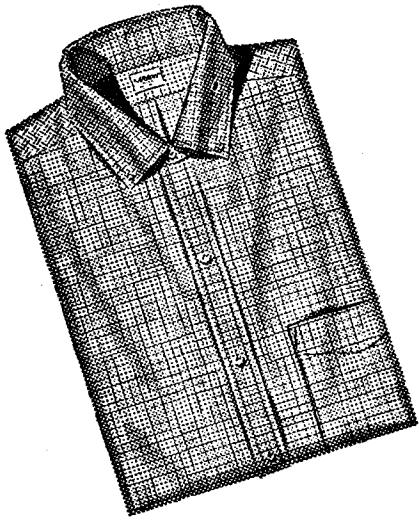
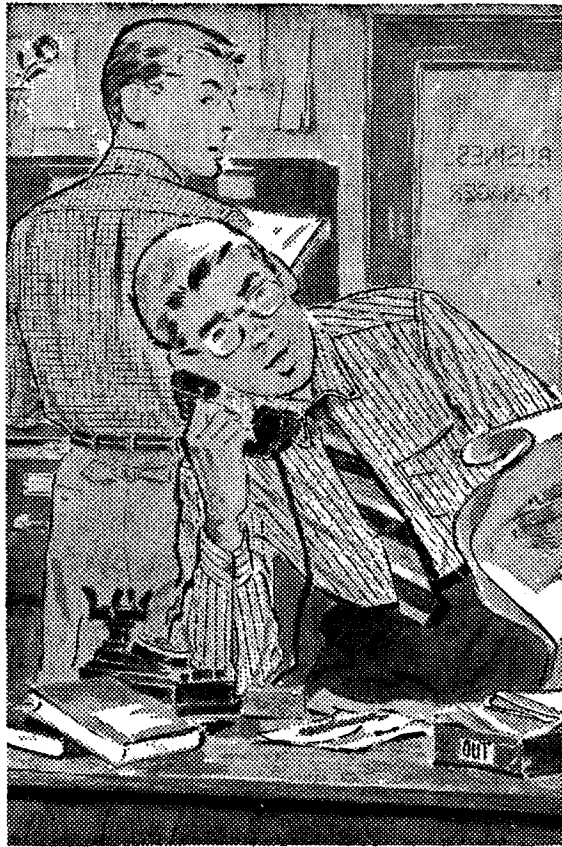
Friendly Personalized Service

California Near Lake

### Happy news! The ARROW University Glen

This brand-new shirt style combines your favorite features: button at rear of collar, box pleat in back and Mitoga®-tapered fit. (See illustration.) In stripes, checks, solids, \$5.00 and up. Cluett, Peabody & Co., Inc.

**ARROW** —  
—first in fashion



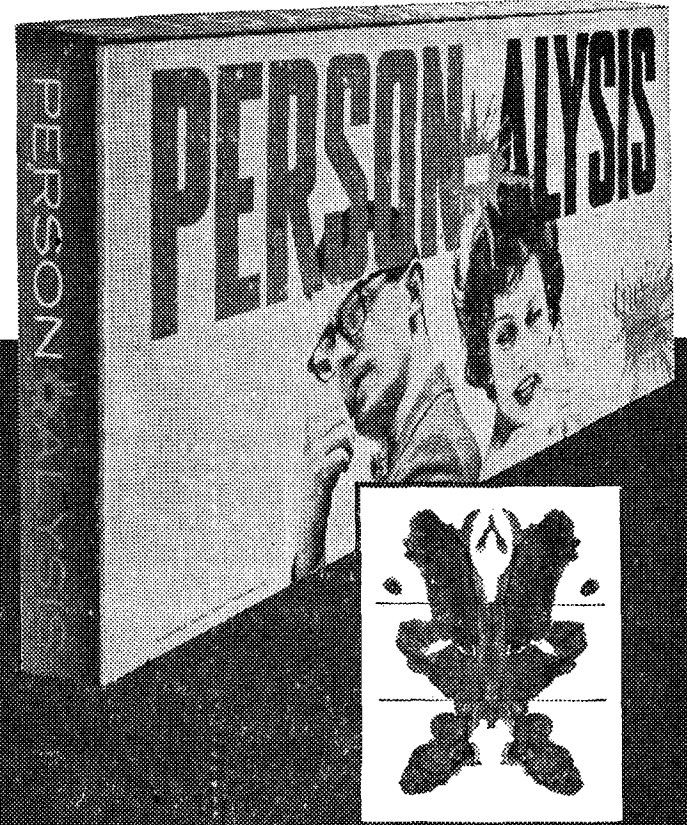
### Check our ARROW University Glen group now

You can have this new *Glen's* up-to-the-minute *University* features — box pleat, button-down collar both front and center back—in a wide range of handsome stripes, checks and solids. See this "must" shirt, first chance you get.



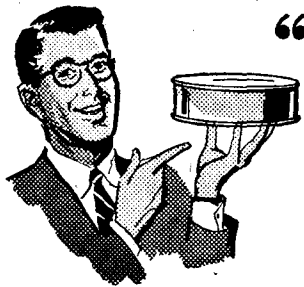
PASADENA  
141 E. Colorado Street  
SY 6-0351

an  
hilarious,  
exciting,  
intimate,  
psychological game  
for adults only

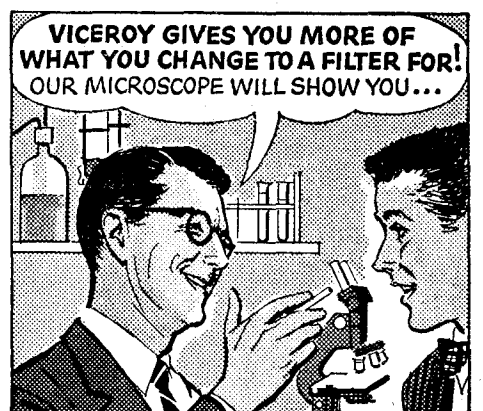
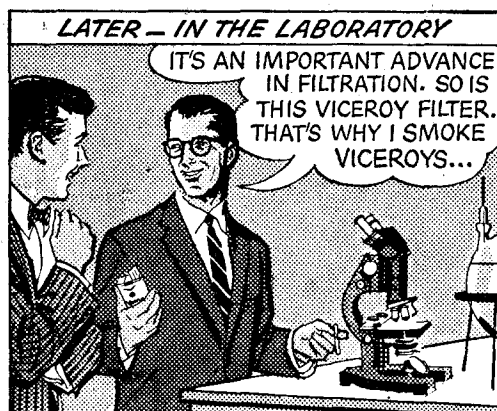
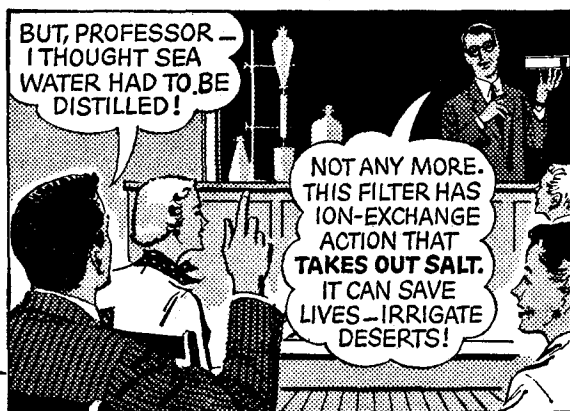


Freud can be fun! New ink blot game is just what the doctor ordered for crazy, mixed-up parties. Choose up sides and let the slips fall where they may. Live a little for only \$3.98. At most stores on and off the campus, or order direct, we pay postage.

LOWELL GAMES - DEPT. C - 43-44 37th ST. - L. I. C. NEW YORK



## "With this filter — if you were thirsty enough YOU COULD DRINK THE OCEAN DRY!"



Light One!  
Discover, as I have —  
**VICEROY GIVES  
YOU MORE OF WHAT  
YOU CHANGE TO  
A FILTER FOR!**



New  
crush-proof  
flip-open box  
or famous  
familiar pack.



# Thinclads Host Poets In Conference Opener

Tech's tracksters open their conference schedule Saturday, favored to defeat the Whittier Poets.

Whittier, led by Vince Asaro in the weights, will join Chapman for a 2 p.m. invasion of Tournament Park, but the Beavers are favored to win both of their dual meets in the "triple

dual" affair.

## "Triple Dual"

The "triple dual" meet calls for separate scoring for each pair of teams, as if each pair was engaged in a dual meet. Thus a relay win for Tech will count 5 points against Whittier and another five points against Chapman.

Asaro is expected to take firsts in the shot and discus on the basis of a similar performance at the Conference Relays. Dick Van Kirk is carrying most of Caltech's hopes, being entered in the broad jump, 100-yard dash, high hurdles, 220, mile relay and possibly the high jump.

Ed Krehbiel and Ron Forbess will give the Beavers additional

strength in the sprints, hurdles and relay, and Lanny Purnell and Lanny Lewyn are expected to finish one-two in the javelin. "Good Ol' Gordie" Barienbrock is favored in the high jump.

## Injuries

Steve Ahrens, an Occidental transfer, looks strong in the 880, and will run a relay lap if a bad leg muscle holds up. Tony Leonard has reinjured his knee and may not make this week's half-mile.

A highlight of the meet will be the Whittier freshman team, which is setting the conference on fire. Their relay team defeated every varsity entry in the Conference Relays.

## SCOREBOARD

### BASEBALL

Cal Poly 10, Caltech 2  
Los Angeles St. 12, Caltech 5

### SWIMMING

Caltech 63, Pomona-Claremont 62, Redlands 37, Whittier 31, Occidental 23

Pomona-Claremont 50, Redlands 42, Occidental 40, Caltech 32

### TENNIS

Whittier 5, Caltech 4

### GOLF

PCC 29, Caltech 1



**Tonight!**  
**Budweiser**  
**on draught**

KING OF BEERS  
ANHEUSER-BUSCH, INC. • ST. LOUIS • NEWARK • LOS ANGELES

You'll be sittin' on top of the world when you change to **L&M**



Light into that



Live Modern flavor

Only L&M gives you this filter fact—the patent number on every pack... your guarantee of a more effective filter on today's L&M.



**Best tastin' smoke you'll ever find!**

Put yourself behind the pleasure end of an L&M. Get the flavor, the full rich taste of the Southland's finest cigarette tobaccos. The patented Miracle Tip is pure white inside, pure white outside, as a filter should be for cleaner, better smoking.

© 1958 LIGGETT & MYERS TOBACCO CO.

# Draft Test Offered

The Selective Service College Qualification Test will be offered to college men May 1, 1958. This test will be the only test offered for the 1957-58 school year.

Scores made on the test are used by local boards as one guide in considering requests for deferment from military service. Application cards and instructional material may be obtained from selective service local boards. Either the score made on the test or class standing may be used by local boards as guides in considering applications for student deferment.

Deferment adds nine years to the time that a man is eligible for draft, and in many cases draft boards are not taking anyone under 22 years of age. However, draft quotas may increase at a moment's notice, as was the case at the outbreak of the Korean War.

Taking the test does not constitute application for deferment, but does facilitate getting a deferment at a later time.



This Space  
DEDICATED  
In Remembrance Of  
21 CALIFORNIA TECH  
REPORTERS  
who are all  
"Flunking Out This Term"  
and have suddenly  
resigned.



## UNITED ARTISTS

"Fort Dobbs"  
and  
"Escape From San Quentin"  
Discount card at box office

## CALTECH

PRESCRIPTION  
PHARMACY

Prompt Free Motor  
Delivery

CALTECH VITAMINS

Caltech Genuine Wheat  
Germ Cereal

CALOID COLD CAPS  
NEW, EFFECTIVE REMEDY

Imported & Domestic  
Wines - Liquors - Champagne

Breakfast, Lunch, Dinner  
SERVED DAILY

Corner California & Lake

# Pit and Paddock

The Sports Car Club of America and the California Sports Car Club have finally gotten together and announced a joint schedule of races for the rest of 1958 in Southern California. Last year there were a few conflicting dates and many races were too close together.

April 12-13 SCCA, Palm Springs  
May 31-June 1 CSCC, Santa Barbara

June 28-29 CSCC, Riverside

July 12-13 SCCA, Del Mar  
Aug. 30-31 CSCC, Santa Barbara  
Sept. 13-14 SCCA, Del Mar  
Oct., CSCC, Pomona  
Nov. 1-2 SCCA, Palm Springs National  
Dec., CSCC, Riverside

It will be noticed that no races at Paramount Ranch and no SCCA Nationals at Riverside are scheduled. Last year there were only three events through which West Coast drivers could get

points toward National standing without traveling great distances. It looks like this condition will be even worse this year.

The 1958 Grand Prix season looks good, with Ferrari, Lotus, Cooper, Vanwall, BRM, and now Aston-Martin competing officially, and Maserati competing through private owners. Firestone will be making Grand Prix tires this coming season. Some cars, notably the 4.5 Maserati and the G. P. Ferrari, handle

much better on Firestone tires, according to reports.

The organizers in Watkins Glen, New York, have filed with the FIA to run a Formula I race late this year. The organizers at Riverside Raceway are also planning a Formula I race as soon as possible.

The CSCC has decided to make the use of roll bars mandatory on all cars after regulations on roll bars are published, which should be soon.

## FINALS SCHEDULE

(Continued from page 2)

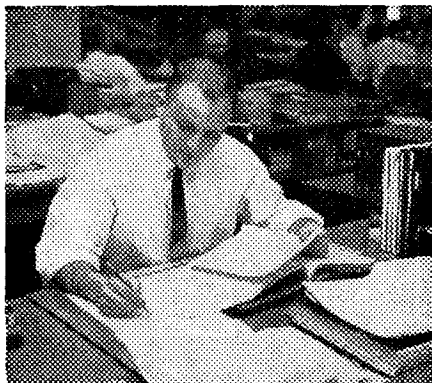
- Ch 61b—F4—M8, 104Sp
- Ch 63a—F3—W1, 102Sp
- Ch 113b—T8, 157Cr
- Ch 124b—M1, 157Cr
- Ch 125b—E4—W1, 157Cr
- Ch 127b—W8, 109M
- Ch 163a—W1, 102Sp
- Ch 226b—T1, 208G
- Ch 227m—M1, 27G
- CE 10b—C4—T8, 210E
- CE 10c—C4—T1, 210E
- CE 115b—M1, 212E
- CE 125—W1, 212E
- Ec 2b—Lishan—M1, 108D
- Brookie—M1, 101-102D
- Ec 48—Th8, 168Ch
- Ec 100b—M8, 101-102-108D
- EE 1b—A3B3C3—T8, 155A
- EE 4b—G3M3—M1, 155A
- EE 4c—F4—W1, 301E
- EE 15b—B4—T1, 208E
- EE 102a—B4—T8, 106Sp
- EE 103b—B4G4—W8, 119K
- EE 132b—M1, 104-106Sp
- EE 160b—G4—T8, 208E
- EE 162b—B4—W1, 208E
- EE 164b—W1, 202E
- EE 170b—T1, 104-106Sp
- EE 181a—W8, 106Sp
- En 1b—Frosh—M1, 201B
- En 6a—M1, 208D
- En 7b—abcd—T1, 206D
- e—T1, 202-205D
- f—T1, 208D
- g—T1, 310-312D
- h—T1, 101D
- Ge 4b—K3—T8, 251-253A
- Ge 106a—K4—T1, 251-153A
- Ge 228—M1, 320M
- Ge 274a—W1, 320M
- H 1b—Frosh—T8, 206D
- H 2b—Sophs—T8, 201B
- H 5b—Seniors—M1, 206D
- Hy 2b—C3—M1, 119K
- JP 121b—T8, 202E
- JP 130b—W1, 08E
- JP 200b—W8, 202E
- L 1a—G4J4—W1, 111M
- L 32b—Bowerman—W8, 108D
- Stern—W8, 111M
- Wayne—W8, 101D
- Ma 1b—W8, 130Ch
- Ma 5b—Dilworth—M1, 130Ch
- Dean—M1, 168Ch
- Erdelyi—M1, 101Ch
- Apostol—M1, 102K
- Ma 59a—J3G4J4—W1, 101Ch
- ME 1—W8, 301T
- ME 3—W8, 206E
- ME 5b—A4(1)(2)(3)(4)—T8, 206E
- ME 15b—A3B3—M1, 119K
- ME 16a—A4(1)(2)—M8, 151Cr
- ME 115b—T1, 202E
- P1 2—Th8, 101D
- P1 3—Th8, 111M
- P1 6—Th8, 108D
- P1 101b—M8, 206D
- Ph 1b—Frosh—M8, 201B
- Ph 2b—Sophs—M8, 22G-251-252-264B
- Ph 27b—G3—T8, 119K
- Ph 106b—G3M3E4—M8, 119K
- Ph 107b—W1, 201B
- Ph 112b—G4M4—M8, 155A
- Ph 129b—G4—T1, 201B
- Ph 131b—G4—W8, 101-102K
- Ph 201b—T8, 264B
- Ph 203b—M1, 264B
- Ph 227b—M8, 264B



KEITH LYNN, B.S.E.E., PURDUE, '52, INVITES YOU TO

*"Spend a day with me at work"*

"I'm an Equipment Engineer for Illinois Bell Telephone Company in Chicago. Speaking personally, I find Bell Telephone engineering darned interesting and very rewarding. But judge for yourself."



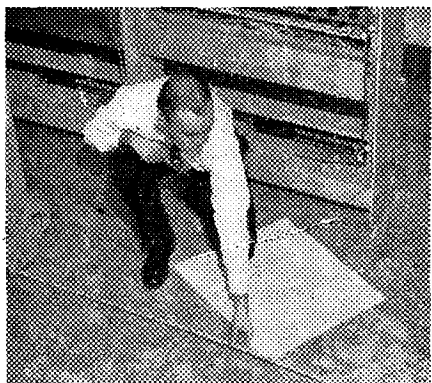
"8:30 a.m. We start at my desk. I'm studying recommendations for installing additional dial telephone facilities at the central office in suburban Glenview. This is the beginning of an interesting new engineering assignment."



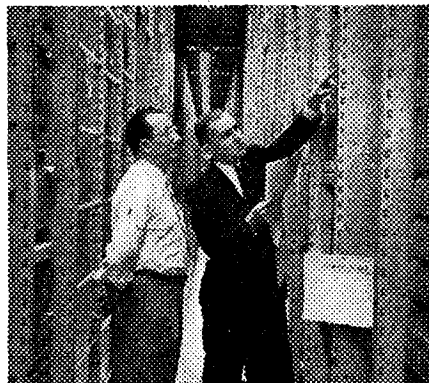
"10:20 a.m. I discuss a proposed layout for the additional central office equipment with Supervising Engineer Sam P. Abate. I'll want to inspect the installation area this afternoon, so I telephone the garage and order a car."



"11:00 a.m. At an interdepartmental conference I help plan procedures for another job that I've been assigned. Working closely with other departments of the company broadens your experience and know-how tremendously."



"2:00 p.m. After lunch I drive out to the Glenview office. Here, in the frame room, I'm checking floor space required by the proposed equipment. Believe me, the way our business is growing, every square foot counts."



"3:10 p.m. Then I drive over to the office at nearby Skokie where a recent engineering assignment of mine is in its final stages. Here I'm suggesting a modification to the Western Electric installation foreman on the job."



"3:30 p.m. Before starting back to Chicago, I examine a piece of Out Sender equipment being removed from the Skokie central office. This unit might fit in just fine at one of our other offices. I'll look into it tomorrow."

"Well, that was today. Tomorrow will be different. As you can see, I take a job from the beginning and follow it through. Often I have a lot of jobs in various stages at the same time. I think most engineers would agree, that keeps work interesting."

Keith Lynn is one of many young engineers who are finding rewarding careers in the Bell Telephone Companies. Find out about opportunities for you. Talk with the Bell interviewer when he visits your campus. And read the Bell Telephone booklet on file in your Placement Office.

**BELL  
TELEPHONE  
COMPANIES**



## THE NEWS

(Continued from page 3)

### Anti-Recession Plans

The Democrats and the President sponsored several anti-recession bills as unemployment hit five million — the highest since depression years.

One resolution calls for more speed in previously approved public works. A proposed bill asks for the money to complete the government highway program as originally scheduled. Both Congress and the Federal Reserve Board are trying to encourage more bank loans.

President Eisenhower disparages most "pump priming" schemes, but he is still asking for new reclamation projects and a special government unemployment benefit program which will go beyond that offered by the states.