

## Furniture changes in the South Houses

SHIVAL DASU AND  
CRYSTAL LIANG  
Contributing Writers

Halfway through the summer, on August 2nd, the residents of the South Houses received an email with the subject, “Important - new furniture for student rooms in the South Houses.” The email informed students of the “great news” that they would be receiving new furniture at the end of August for the new academic year, but the recipients of the email were skeptical. The email included no pictures or dimensions of the new furniture, which worried the many students who already had their own furniture that they were planning to use for the next academic year.

Alice Zhai, a sophomore in Fleming, said, “one of the reasons that I got upset when they randomly told us that we were going to get new furniture was because I planned to loft the bed and put some sort of futon or sofa under it, but then, initially, when they didn’t give us lofting kits, I would have no place to put this setup, and I had already bought a futon before.”

The old bed frames in the South Houses could be lofted to allow space for the couches and other furniture underneath to conserve space, but the new beds would have a non-adjustable height of 3 feet—meaning there might not be any space for extra furniture in singles, which are the smallest rooms of the South Houses.

According to undergraduate bylaws, discussions about new furniture should have taken place in either the Stewardship Committee or the IHC. On a general level, both organizations consist of representatives from each House who act as liaisons between the House and administration for affairs affecting student life. These representatives are responsible for communicating any major changes back to their respective Houses, but, in the case of the new furniture, that clearly didn’t happen.

When I asked Housing to comment on the breakdown in communication, Maria Katsas, the director of Housing, said they were surprised since they had mentioned the furniture changes to the IHC on two separate occasions this spring, but “nobody kind of said anything - so I was surprised by that, and so we went ahead”.

It seems as though the many discussions about the new undergraduate residence, Bechtel House, overshadowed the announcement about the new furniture. When I asked Jake Larson, president of Ricketts and a member of the IHC, about whether

the IHC knew about the changes, he told me that, although Housing had told IHC that they would be getting new furniture this year, it was never discussed seriously and no timeline was given. “I’ve talked to IHC and as far as I can recall, as far as any of us can recall, it was a brief casual meeting at a Bechtel meeting that happened either late 3rd term or early in the summer,” he said.

Upon receiving requests for information about the furniture from concerned students, Housing sent an email out to students with the dimensions and pictures of the new furniture a few days later on August 5th. From the pictures, it was clear that the new furniture would be very different than the old. While the old furniture had looked custom-made from raw, unfinished wood, the new furniture had clearly been selected from a catalogue of standard dorm-room furniture. The new desk was smaller than the old one, and it had a wood laminate finish instead of raw wood; the bed frame was metal and had metal springs to support the mattress.

On the same day, Housing sent another email to students saying that they had purchased lofting kits due to “quite a number of concerns” about the new beds and urged students to respond in a few days about whether or not they wanted them, since the new furniture was a “time-sensitive issue.” Despite the overwhelmingly negative response to the new furniture, Housing still seemed anxious to have the new furniture installed as quickly as possible.

However, students remained dissatisfied with the change and inundated Housing with emails asking for more details. Unfortunately, Maria Katsas, the director of Housing, was on vacation for two weeks after the plans for the new furniture were announced, so students’ concerns were answered individually through email by her subordinate, Marie Lara. Multiple student representatives told me that the lack of cohesion in the Housing office this summer made it more difficult to negotiate change. According to Jake, “the communication internally between them wasn’t clear, like what Marie told students, Marie didn’t know that.”

After the new furniture announcement, many students emailed Marie asking if they could keep the old furniture. In one case, she told a student in Blacker that the old furniture has become the students’ personal property as long as they assumed the responsibility of disposing of it (or taking it with them) when they moved out.

The student forwarded Marie’s response to all of the South House Residents, who treated the email as an official announcement. Jake described the student reaction at that time, telling me “students were running around finding rooms that were unoccupied and stealing their old sets of furniture. I know someone who wanted furniture for their apartment, and went into a room that was unoccupied, and stole the old furniture.”

When I talked to Housing, Dimitris Soulentes, the Assistant Vice President of Student Affairs, told me that, in an unrelated incident, “there was a bed that was found on campus outside the Housing properties and we had to remove it—we are trying to establish its origin.” “It was found in an inappropriate place,” Maria added. Eventually, things settled down and no additional furniture was found in unexpected places on campus, but this episode of mild hysteria illustrated the emotional importance of the furniture change to South House Residents. During my interview with Housing, Dimitris wanted me to let students know in the article that if they are having second thoughts about keeping the old furniture, they can dispose of it during a Housing collection at the end of this term.

Because of the widespread dissatisfaction about the new furniture among students, Diandra Almasco, a Mole and an undergraduate member of the Stewardship Committee, sent out a survey to the South House students to catalogue their concerns about the new furniture. Tellingly, of the 275 South House residents that the change would affect, a surprising number of them, 155, filled out the survey—a response rate at least 10% higher than that of the average TQFR. A majority of respondents opposed the new furniture changes, with the most common complaints being the inability to loft the new beds, the reduced sizes of the desks, and a concern that there wouldn’t be a comfortable amount of floor space with the new setup. The most unanimous response was to the question about whether they should have been polled about the furniture changes beforehand, with 85% of respondents answering yes.

Diandra wanted to bring the consensus of student opinion from the four South Houses to Housing, so she scheduled a meeting with representatives from each of the South Houses who happened to be at Caltech this summer to discuss the results of the survey and to make sure they were all on the same page as to what should be discussed with Housing. Subsequently, Diandra,

Housing, and the other student representatives worked effectively to resolve the undergraduates’ issues with the new furniture. If Housing seemed anxious to go through with the furniture changes without any prior discussion, once the talks began, they were receptive to student input about the new furniture. Jake said, “initially [Housing] felt they were very bound, but, the more we pressed them, it seemed they were less and less bound to the decisions they had made to the contractor.” The installation date for the furniture was pushed back from the end of August to mid-September, giving students a bit more time to prepare their rooms.

Over the course of the negotiations, Housing helped resolve the students’ most pressing issues about the furniture; they allowed students to keep the old furniture, provided them with loft-kits to loft the new beds and a bigger desk option, and ordered them a second dresser. They even created a mock-up room in Ricketts with the new furniture so that South House Residents could try it out before it was installed.

I contacted Maria and Dimitris from Housing to talk about the furniture changes, and they were very open to discussing their policies with me, promptly answering my questions both in-person and over email. Maria told me that Housing’s original intent was to provide furniture that lasted longer and was easier to maintain. She found that students might not know that the old furniture was only nine years old since it had aged so quickly. She said, “as Housing, we have the responsibility to provide a nice environment. Looking how the furniture was aging over those 9 years and over those 9 years we had refinished pieces, we had replaced pieces, so that’s why we tried to go with something that would last longer.” The perks of the new furniture include a 25-year warranty, increased durability, and easily replaceable parts due to unique serial numbers which identify each component of the furniture.

Diandra did a good job of making the negotiation process transparent, keeping South House Residents updated through periodic emails informing them of any new developments, such as the postponement of the installation date for the furniture, or the addition of an option for a larger desk.

I met with Diandra over the summer to discuss her role in the furniture changes, and when I complimented her on her

organization, she smiled and said, “I felt that it was important to make sure that everyone’s opinions were heard. Some of the meetings were scary, but it was important [that I be organized] because I was the only student there.” During our meeting, Diandra was upbeat and full of energy, speaking quickly but clearly, demonstrating a solid command of the facts about the old and new furniture as well as a clear understanding of what made this issue important to students. When I commented on her energetic delivery, she told me that her energy came from talking about an issue that she cared about.

When I asked her how she chose the questions for the survey, she told me that she was interested in collecting criticisms about the new furniture because she was worried that Housing might not know about what is important about the old furniture to Caltech culture. For instance, she told me that Housing did not consider the importance of large desks.

When I asked what’s important about big desks, Diandra said, “people at Caltech like to work together and they need big desks to collaborate. Also, people sometimes are using a notebook and they have a textbook, paper, and a laptop out at the same time. There can be a lot going on.” She then added, “Also, modularity was a pro of the old furniture. The lofted beds provided more space for frosh rooms. People had a lot of freedom to set up their bed and desk in a configuration that worked for them.”

Towards the end of the interview, she talked about the importance of increased communication in the future, so stressful experiences like an unexpected furniture replacement could be avoided, saying, “even just having a conversation with the students before these changes is important. They affect students more than admin think. The South Houses are not just dorms; they are our homes.” Diandra mentioned that talking to Dimitris to resolve the students’ issues with the new furniture was a positive experience. Also, she told me that having Dean Gilmartin at the last meeting was positive, saying that “Dean Gilmartin was perceptive to the fact that more conversation needed to take place with students,” a sentiment that Jake had expressed as well.

When I talked to Dean Gilmartin about his observations about the furniture meeting, he had a very thoughtful perspective on things.

*Continued on page 3*

IN THIS  
ISSUE

OPINION | PAGE 3  
TANVI REVIEWS THE  
NEW HARRY POTTER  
MOVIE

SPORTS | PAGE 5  
PERCIN, TAKAHASHI  
WIN EVENTS AT  
CHAPMAN

SPORTS | PAGE 5  
D’COSTA SHINES  
AGAINST EMBRY-  
RIDDLE

SPORTS | PAGE 5  
MEN’S BASKETBALL  
FALLS TO OGLETHORPE

# Caltech Y Column

## CALTECH Y

The Caltech Y Column serves to inform students of upcoming events and volunteer opportunities. The list is compiled by Katherine Guo from information given by the Caltech Y and its student leaders.

Founded by students in 1916, the Y was organized to provide extracurricular activities planned and implemented by students as an opportunity to learn leadership skills and discover themselves. The mission of today's Y remains the same—to provide opportunities that will prepare students to become engaged, responsible citizens of the world. The Y seeks to broaden students' worldviews, raise social, ethical, and cultural awareness through teamwork, community engagement, activism, and leadership. More information about the Caltech Y and its programs can be found at <https://caltechy.org>. The office is located at 505 S. Wilson Avenue.

Ongoing and past programs hosted by the Caltech Y:

Alternative Spring Breaks: Peru, Costa Rica, New York, Yosemite, San Diego, San Francisco

Make-A-Difference Day: Hillsides Home for Children, LA County Arboretum and Botanic Garden, Children's Hospital Los Angeles (Cochart), Eaton Canyon, Lifeline for Pets

Explore LA: Lakers game, Next to Normal musical, Norton Simon Museum trip

RISE Tutoring program (an afterschool math and science-focused tutoring program that serves public school students between grades 8 and 12)

### Upcoming Events

#### 1. Support the Y every time you shop on Amazon Smile

Cyber Monday is here and you can support the Caltech Y while you do your holiday shopping. When you shop at Amazon Smile, Amazon donates 0.5% of the purchase price to Caltech Y.

Bookmark the link <http://smile.amazon.com/ch/95-1684790> and support us every time you shop.

#### 2. Save 20% on tickets to A Cinderella Christmas at the Pasadena Playhouse!

Dec 8th, 2016 - Jan 8th, 2017

The Caltech Y has partnered with the Pasadena Playhouse to bring you a 20% discount on tickets to the Panto performance of A Cinderella Christmas at the Pasadena Playhouse.

Panto at The Playhouse, now in its fifth year, has become a "must-do" holiday tradition for California residents. A Cinderella Christmas is the

latest Holiday Spectacular presented by The Pasadena Playhouse and Lythgoe Family Panto in the style of the traditional British Panto. A Panto is interactive holiday fun for all ages, and the timeless tale of Cinderella will feature comedy, magic, dancers from 'So You Think You Can Dance' and contemporary music from Meghan Trainor to Justin Timberlake.

Save 20% on tickets with the code: CaltechY  
<http://pasadenaplayhouse.org/Cinderella>

#### 3. Caltech Y Decompression

Saturday | December 3rd | 7:00 - 9:00 PM | Winnett Lounge

Stressed during finals week? Join us to decompress with free food - burgers, hot dogs, cookies, fruit and veggies, ice cream, chips and drinks; entertainment - movies; and just hanging out with your friends. It is a great way to relax a little before the first finals of the school year!

If you'd like to volunteer to help out, please fill out the form here: <https://goo.gl/forms/czSdG1zs67uxycq12>

Volunteers get a free gift card!

#### 4. The Patrick Hummel and Harry Gray Travel Fund

Applications due January 10th, 2017

The Patrick Hummel and Harry Gray Travel Fund was established as a joint gift from Carla and Paul Hummel, Patrick Hummel, and Shirley and Harry Gray, Arnold O. Beckman Professor of Chemistry and Founding Director of the Beckman Institute. The endowed fund supports undergraduate travel opportunities that promote professional and leadership development and broadens students' perspective as engaged, responsible citizens of the world.

To apply and for more information, please visit:

[https://caltechy.org/programs\\_services/resources/PHHGTF.php](https://caltechy.org/programs_services/resources/PHHGTF.php)

#### 5. Hathaway Sycamores

Every Wednesday | 5:30 - 8:00 PM | Highland Park

Volunteer at Hathaway Sycamores, a group that supports local underprivileged but motivated high school students. There are a variety of ages and subjects being tutored. The service trip includes about an hour of travel time and 1.5 hours of tutoring. Transportation is included. For more info and to RSVP email Sherwood Richers at [srichers@tapir.caltech.edu](mailto:srichers@tapir.caltech.edu). Eligible for Federal Work Study.

[tapir.caltech.edu](mailto:tapir.caltech.edu). Eligible for Federal Work Study.

#### 6. Pasadena LEARNS

Every Friday | 3:00 - 5:00 PM | Pasadena

Come volunteer at Madison and Jackson Elementary School! We are partnered with the Pasadena LEARNS program and work with their Science Olympiad team or do regular tutoring along with occasional hands-on science experiments. Transportation is provided. For more information and to RSVP, contact [azhai@caltech.edu](mailto:azhai@caltech.edu). Eligible for Federal Work Study.

#### Beyond the Y

##### 1. Tutors needed for Aspires West

Tutors are desperately needed for the Aspires West after-school program: math (general math, geometry, algebra 1 and 2) and English for elementary, middle and high school students.

Tutor schedules are Monday through Thursday, 4 -7 p.m.; Saturday, 8:30-12:30 p.m. Aspires West, Pasadena (AWP) provides low-income students and parents with services and opportunities that provide the knowledge and fundamental skills for student success. Interested volunteers should contact: [inbox@fostercareproject.org](mailto:inbox@fostercareproject.org).

## The California Tech

**Editors-in-Chief**  
Jon Cotler  
Katherine Guo

**Page Editors**  
Ramya Deshpande  
Tanvi Gupta  
Chloe Hsu  
Hye Joon Lee  
Maitreyi Nair  
Ciara Ordner

**Contributing Writers**  
Shival Dasu  
Crystal Liang

**Circulation Manager**  
Kit Chinetti

**Advisor**  
Richard Kipling

Caltech 40-58, Pasadena, CA 91125  
Contact [tech@caltech.edu](mailto:tech@caltech.edu)

*The Tech* is published weekly except during vacation and examination periods by the Associated Students of the California Institute of Technology, Inc. The opinions expressed herein are strictly those of the authors and advertisers.

Letters and submissions are welcome; e-mail submissions to [tech@caltech.edu](mailto:tech@caltech.edu) as plain-text attachments, including the author's name, by Friday of the week before publication. *The Tech* does accept anonymous contributions under special circumstances. The editors reserve the right to edit and abridge all submissions for any reason. All written work remains property of its author.

The advertising deadline is 5 p.m. Friday; all advertising should be submitted electronically or as camera-ready art, but *The Tech* can also do simple typesetting and arrangement. All advertising inquiries should be directed to the business manager at [tech@caltech.edu](mailto:tech@caltech.edu). For subscription information, please send mail to "Subscriptions."

## WRITE FOR THE CALIFORNIA TECH!

THE CALIFORNIA TECH IS ALWAYS  
LOOKING FOR NEW WRITERS!  
WE ACCEPT REVIEWS, OPINION  
PIECES, RESEARCH,  
NEWS STORIES,  
COMICS, AND MORE!

WE PAY FOR QUALITY ARTICLES,  
SO JOIN THE STAFF TODAY!

EMAIL [TECH@CALTECH.EDU](mailto:TECH@CALTECH.EDU)



## South Houses receive furniture “upgrades”

*Continued from page 1*

He said that it was “pretty clear” that there were communication issues, perhaps on both sides, about the new furniture. When I asked him what he meant, he said, “I thought that the meeting we had where there were student representatives from the houses and students talked about the best way to do this and what the concerns were [was very good]. My sense is if this happened one or two stages earlier in the process, the outcome would have been better. It didn’t happen until then. What I liked is that when it did happen, students were very thoughtful. They understood the constraints. But staff also went out of their way, given that there were constraints on their side too to accommodate every concern: ‘Can we keep our old furniture?’ ‘Can we loft the new furniture?’ ‘The desks are

too small.’ The Housing staff was saying, ‘Okay, if there’s not enough desk space, then we can get you two desks,’ ‘Okay, if there’s not enough storage space, we can get you new furniture.’ The best outcome would have been if that conversation started earlier.”

That seems to be the consensus among students as well. Recently, Diandra sent out a new survey to students showing that their satisfaction with the new furniture was much improved. Some issues remain: when the mock room was set up, many students commented on the squeakiness of the bed, and from the new survey results, it seems that this is still a universal concern.

Many students in Blacker House remain dissatisfied with the new furniture for cultural and aesthetic reasons: Tom Gorordo of Blacker said, “I really like the nice wood aesthetic of the old furniture.

I feel like the new furniture is really sanitizing. I really liked how the old woodwork matched the settings of the room. The closets are wood, the cabinets and the trim are wood, and the sinks are wood. It was coherent.” Although the old furniture was only 10 years old, facilities told me that it was chosen to match the room’s wooden fixtures. Diandra said, based on comments from alumni, the same bed-desk pattern had existed in South House rooms since the 70s or 60s.

However, with a population as large as the South Houses, it’s hard to please everyone, and there are a lot of positive opinions about the new furniture. Alice, who told me that she was upset by the initial furniture offerings since she couldn’t loft her bed, actually prefers the new furniture, now that she has a bigger desk and a loft kit. Others have told me that they like

the new desks, since the fact that they are smaller than the old ones means that their rooms now feel more open and inviting.

Although most of the furniture changes happened this summer so that students would have more time to reorganize their rooms, the last furniture change happened only a few weeks ago when a delivery team went to all the rooms in the South Houses and swapped out the old dressers for the new ones. When I asked Diandra how happy people were about the new dressers, she said, “I think that the thing that people weren’t satisfied with, that kind of mimics the whole furniture change process, is the fact that the dresser change was something that kind of just jumped on people that they weren’t expecting.” She did say that people had more storage now, which was an advantage for many.

Then we talked about the negotiations overall, and I asked Diandra how satisfied she was with the outcome. She considers the furniture negotiations with Housing a work in progress, saying that she is satisfied that Housing, even after the summer, is still receptive to student input, particularly about the bed squeaking issue. Feeling that this process has improved the relationship between students and Housing, she also said, “I think it’s very important that we are taking these steps, and I think that we should remember that if we have problems, it’s worth saying something about them and presenting our case, because there is always something that can be done, and it might help everyone to understand each other to create a stronger connection between students and Housing.”

## So how fantastic were the beasts we set out to find?

TANVI GUPTA  
Page Editor

(Mild spoiler alert)

For the Harry Potter fandom, *Fantastic Beasts and Where to Find Them* was the much-needed rainfall in a dry LA summer. Director David Yates of last-four-Potter-movies lore had his own large shoes to fill, in addition to the expectations of skeptical fans who increasingly wonder just how expansive the undetectable extension charm on the magic world is. By and large, he’s managed to do a pretty good job considering the slim 150-page namesake textbook the movie’s based on. Jazz-age America is done full justice to, from the flapper-esque hairdos and eternally busy New York crowds to the cobbled streets and signature Model Ts. The destruction of the Big Apple is attended to in style, fitting work from one who has had prior experience demolishing the city in *The Dark Knight*, James Hambridge. The “rebuilding” special effects are also noteworthy for their detail - it’s hard to remain stolidly unimpressed by crumpled metal scaffolding stretching and straightening out like a yoga guru. In general, scenes which have witches, wizards and more potent magical forces scurrying around the city are refreshingly new and very well-executed; it’s a nice change to see magic at

work outside the hallowed halls of Hogwarts or in remote locales across Great Britain. Credit also goes to the animation department for the cutesy Niffler and its magical brethren. It’s when the team attempts to transport us to a purely magical world (the inside of Newt’s suitcase) that the marvelous direction is less satisfying. We know already magic is breathtaking. The vast, aglow-with-diffused-light landscapes are nice to look at but seem excessive, especially when presented in the middle of tense action sequences. Perhaps Yates wanted to reiterate the power of magic, though I’m pretty sure we could have recognized it from the fact that it brings all of New York to a standstill (and then restarts it).

Eddie Redmayne brings Newt Scamander to life with some distinctive touches, namely the careful tread (apparently honed by him for the part), the almost Pollyanna-ish hope for the American wizarding world, and the generally diffident demeanor. He saves Newt from being an underwhelming main character, though there is definitely background here that isn’t being touched upon (Leta Lestrange, anyone?). As someone who particularly enjoyed the character growth throughout the Potter series, I’d be disappointed if Newt Scamander is left as an earnest magizoologist with a vague past even in the forthcoming movies. Happily, we get a lot more

context for the supporting cast: the Goldstein sisters, Credence Barebone, and Percival Graves all have detailed backstories and distinct characters. Capable, strong-willed Tina Goldstein (played by Katherine Waterston) often takes the limelight as the character running the show, and is effectively backed up by her sister, unexpectedly skilled Legilimens Queenie (Alison Sudol). Tina’s character is enhanced by her small subplot of being a demoted Auror, which goes on to play a large role in the climax, and these details sometimes make her story more worth hearing than Newt’s. Similarly, the conversations between Credence (Ezra Miller) and Graves (Colin Farrell) are the most unsettling parts of the narrative, and both are integral to the movie. Miller is supremely convincing as a troubled young adult trapped in his own body, and Farrell is the perfect mix of reliable Auror and hidden vulture. Easygoing Jacob Kowalski (Dan Fogler) provides comic relief and is also endearing as the necessary sacrifice.

As a first-time screenwriter, JK Rowling manages to dish out an unexpectedly novel prequel to the Potter franchise. The story isn’t a rehash of some side Potter plotline, the characters (especially the American wizarding world) are worth exploring further, and the underlying themes of intolerance,

suppression, and death lend the story a thought-provoking gravity. The magical machinery chugs along without becoming too trite; there’s a good enough blend of new material and Easter eggs to keep both one-time watchers and die-hard fans entertained. If I had to choose, I’d say it might be a little hard to follow for those totally unacquainted with the Potterverse, but I’m not one to complain. Rowling starts off with multiple plot lines which tie together impeccably at the end but could easily be improved with more individual focus. I’d bear in mind that she intends to follow up with four more movies, and seen in the light of a “stage-setting”, *Fantastic Beasts’* multiple plot lines are arguably necessary. In spite of the frequent transitions, the story gets predictable in some parts. Graves’ very affected eagerness to put dark forces to “use” gave the plot away early on, and any student of Rowling’s work would know that there was no chance she’d give us a perfect ending where everyone kisses and goes their cheery ways. She still manages, however, to throw in enough plot twists, references, and cliffhangers to make it entertaining.

Ultimately, the fantastic beasts are exciting, but finding them is more of a ploy to involve Newt in the happenings of the American Wizarding World. Often, the movie runs along as a result of chance events (such as Newt happening

to be an Obscurus expert and happening to run across one in New York on his way to Arizona); I’d like to see a more character-driven plot next time. Now that the stage has been set, audiences will also expect a more focused storyline tailored to a 2-hour movie next time around. The Harry Potter books had plenty of time to enumerate events and introduce characters. If the movies had a fault, the wealth of storylines to cover left no room for the subtler character studies that made the books so special. It’s a tall order, but if Rowling plays her cards right, this would be the right time to remedy the nagging regrets of both the Harry Potter and *Fantastic Beasts* movies. We’re well acquainted with the subtle tales she can weave, and we’ve gotten a glimpse of the characters she can bring to life as a screenwriter; I’m waiting for a blend of the two. All in all, *Fantastic Beasts* boasts an intriguing, believable, and mostly logical storyline (unlike another spinoff released this year, but that’s a discussion for another day), good actors, and visuals that don’t disappoint. As a social commentary, it could say a lot, but I prefer my cinema a bit more escapist, so I’ll simply call it an entertaining, nostalgia-inducing watch.

P.S. Watch Redmayne teach Jimmy Fallon the Erumpent mating dance to take your mind off impending finals.

### NOMINATE YOUR FAVORITE PROFESSOR FOR THE FEYNMAN TEACHING PRIZE!!!

Here’s your chance to nominate your favorite professor for the 2016-17 Richard P. Feynman Prize for Excellence in Teaching! You have from now until December 15, 2016 to submit your nomination package to the Provost’s Office to honor a professor who demonstrates, in the broadest sense, unusual ability, creativity, and innovation in undergraduate and graduate classroom or laboratory teaching.

The Feynman Prize is made possible through the generosity of Ione and Robert E. Paradise, with additional contributions from an anonymous local couple. Nominations for the Feynman Teaching Prize are welcome from faculty, students, postdoctoral scholars, staff, and alumni.

All professorial faculty of the Institute are eligible. The prize consists of a cash award of \$3,500, matched by an equivalent raise in the annual salary of the awardee. A letter of nomination and detailed supporting material, including, but not limited to, a curriculum vitae, course syllabus or description, and supporting recommendation letters should be emailed to [kkerbs@caltech.edu](mailto:kkerbs@caltech.edu) or directed to the Feynman Prize Selection Committee, Office of the Provost, Mail Code 206-31, at the California Institute of Technology, Pasadena, California, 91125. Nomination packages are due by December 15, 2016.

Additional information including guidelines for the prize and FAQ may be found at <http://provost.caltech.edu/FeynmanTeachingPrize>. Further information can also be obtained from Karen Kerbs (626-395-6039; [kkerbs@caltech.edu](mailto:kkerbs@caltech.edu)) in the Provost’s Office.

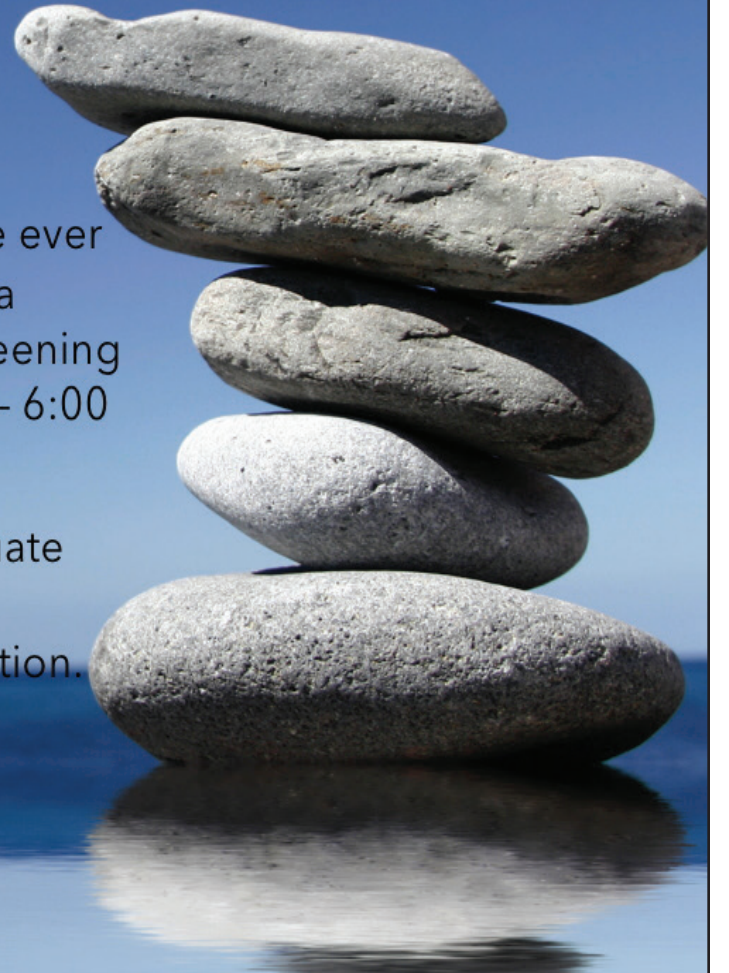




# Mindfully RESILIENT

Mindfulness-based cognitive therapy is an 8-week structured program designed to reduce future depressive relapse. If you've ever dealt with depression before, and are not currently dealing with a depressive episode, you are invited to schedule a 30-minute screening interview for the Winter group. It will meet Thursdays from 4:00 - 6:00 beginning the second week of the term.

Mindfully Resilient is open to all currently enrolled Caltech graduate and undergraduate students. Call the counseling center at (626) 395-8331, or visit [counseling.caltech.edu](http://counseling.caltech.edu) for more information.



You chose one of the  
most trusted institutions  
in **SCIENCE**.



Now choose one of the  
most trusted institutions  
in **FINANCE**.



When you want unsurpassed stability, integrity and value for your money, Caltech Employees Federal Credit Union offers an honest alternative. There are no gimmicks. No annual fees. No harsh penalties.

Just some of the lowest lending rates and highest savings rates in the nation... and a state-of-the-art eBranch for easy, convenient online and/or mobile access to your account. We're the overwhelming choice for financial services among the entire Caltech family. If you haven't yet joined, call or visit us online or in person today. You belong here.



<sup>62</sup> Smarter <sup>16</sup> Solutions. <sup>59</sup> Proven <sup>75</sup> Results.

**Campus Office** 515 S. Wilson Ave. (physical address) • **Campus ATMs** Winnett Center & Keith Spalding Building  
**626/395-6300 • 800/592-3328 • [www.cefcu.org](http://www.cefcu.org)**

*Must qualify for CEFCU membership to join. Minimum \$5 deposit and one-time \$5 membership fee due upon opening any CEFCU account. Federally insured by NCUA.*



## Percin, Takahashi win events at Chapman

GOCALTECH.COM  
Actual Sports Content Editor

ORANGE, Calif. -- Sophomores Brittany Percin and Gemma Takahashi of the Caltech women's swimming & diving team impressed for a second time in 2016, this time at Chapman University on Saturday morning.

Percin was perhaps the Beavers' greatest standout, winning two events on the day and finishing a close runner-up in her third. Percin won the 100-yard freestyle in 55.49 seconds and then won the 100-yard butterfly in 1:00.51, narrowly out-touching classmate Takahashi, who also won the 100-yard backstroke (1:01.00), the event in which she is the Caltech record holder.

Head coach Paul Hughes and the Beavers will have plenty of time to build on their



Why is there a picture of the men's team on the women's article, you ask? It was a good space filler. So was this caption.  
-gocaltech.com

accomplishments to this point in the season. The team is off from competition until Jan. 14, 2017, when they take on Occidental College and Pomona-Pitzer Colleges in a SCIAC tri-meet after a month-and-a-half of grueling winter break training.



Ah yes swim season - get ready for more pictures of the backs of unidentifiable swimmers' heads.  
-gocaltech.com

## D'Costa sets personal best against Embry-Riddle

GOCALTECH.COM  
Actual Sports Content Editor

PASADENA -- For the second time in three days, the Caltech women's basketball team brought energy to all four quarters against an unfamiliar foe.

Also for the second time in three days, freshman guard Samantha D'Costa led the Beavers in scoring in a close loss that was competitive for the game's entirety. This time, D'Costa set a personal best with 19 points and came one rebound short of the first double-double of her college career. Nine of her points came in the third quarter.

Almost as important as D'Costa's 19 points was her efficiency from the free throw line. The freshman made all four of her attempted free throws. D'Costa also filled

the stat sheet with three assists, one steal and committed two fewer turnovers than she did in the Beavers' home opener against Benedictine-Mesa.

Senior captain Kate Lewis factored once again inside for the Beavers and scored 11 points to go with six rebounds, though she fouled out late in the fourth quarter. Sophomore Elizabeth Eiden led the home side with three blocks and fellow six-foot-plus sophomore Madeline Schemel had two blocks to go with eight points and four rebounds.

Caltech outshot its opponent from short range for a second game in a row, but lost the battle from beyond the perimeter, which ultimately proved to be the deciding factor in a game in which the Beavers took a 10-3 lead into the second quarter.



"Call me fun-size one more time - I dare you!" - Nika, probably.

-gocaltech.com

## Beavers' comeback bid falls short against Oglethorpe

GOCALTECH.COM  
Actual Sports Content Editor

PASADENA (Nov. 21, 2016) -- Freshman guard Alec Andrews led Caltech men's basketball on an impassioned fourth quarter run that saw the Beavers come up just shy of their first victory of the season in Monday's matchup against visiting Oglethorpe University.

Trailing 48-37 with just over 11 minutes to play, Andrews and the Beavers embarked on a 14-4 run to cut the Stormy Petrels' lead to just one point with less than four minutes remaining. Andrews connected on two three-pointers in that span and led the Beavers with 14 points on the game while adding eight rebounds, four assists and three steals. Junior David Kawashima also had four assists and three steals as well as five rebounds

and a single turnover. Senior big man Nasser Al-Rayes scored six points and led the team with three blocks.

Caltech went shot-for-shot with Oglethorpe over the first half in large part



"I think I can, I think I can. I know I can, I know I can." - The little basketball player that could.

-gocaltech.com

due to the hot hand of senior guard Ricky Galliani. Galliani led the Beavers in first-half scoring, totaling eight points within the first seven minutes of the game, and finished with 11 points stemming from three three-pointers

and two free throws. His first half ended early due to foul trouble and the Beavers' 17-11 lead quickly shrunk to three, then flipped around to Oglethorpe's advantage as

the Stormy Petrels raced ahead to a seven-point halftime margin.

One of the biggest improvements the Beavers made from the season opener was getting the bench more involved. Sophomore swing man Brent Cahill and freshman guard Bret Johnson came off the bench to each provide Caltech with seven points.

Ultimately, the Beavers were unable to get the one basket they needed to put themselves ahead for good and ended up dropping the tightly contested affair. Nevertheless, Caltech managed to outshoot its opponent, albeit by a narrow 34.4-32.8 percent edge and were the better team from long range.

Though the turnover battle was not lopsided, Oglethorpe did generate more points off the extra possessions, outscoring Caltech 20-8 in that department.



# ASCIT Minutes

No ASCIT meeting this week.

Meetings are every week in SAC 13

## ASCIT Board of Directors Meeting

Minutes for 11 November 2016. Taken by Tim Liu.

**Officers Present:** Andrew Montequin, Tim Liu, Bobby Sanchez, Kalyn Chang, Robin Brown

**Call to Order:** 12:06 pm

## President's Report (Andrew):

- Present and accounted for
- Happy Veteran's Day

## Officer's Reports:

### V.P. of Academic Affairs (ARC Chair: Tim):

- Met with Core Curriculum Steering Committee and voted on the pass fail changes
- Student Faculty Lunch is happening on November 21st

### V.P. of Non-Academic Affairs (IHC Chair: Bobby):

- Met with Joe Shepherd and Dean Gilmartin to discuss town-halls about Bechtel
- Library committee is being formed

### Director of Operations (Sakthi):

- Met with DevTeam to talk about improvements to Donut
- Club steering committee met

### Treasurer (Kalyn):

- Houses have been using inter-house joint event funding

### Social Director (Robin):

- Movie night for *Fantastic Beasts and Where to Find Them* on November 18th
- Big I is happening on February 11th

### Secretary (Alice):

- Nothing to report

If anyone has any questions or concerns about a section of the minutes please email the appropriate officer. We are happy to answer any questions.

**Meeting Adjourned:** 12:28pm

## VICE PROVOST'S OFFICE HOURS

Vice Provost, Chief Diversity Officer, and Professor of English, Cindy Weinstein, offers weekly office hours. This is an opportunity for undergraduate, graduate students, and postdocs to meet and discuss topics pertaining to the Council on Undergraduate Education; Caltech accreditation; the Staff and Faculty Consultation Center; Student-Faculty Programs; the Center for Teaching, Learning and Outreach; the Caltech Diversity Center; and the Libraries. There are four 15-minute appointments available per hour. Please sign up in Parsons-Gates room 104, or call the Vice Provost's Office at ext. 6339.

*Fall term hours: 12:00-1:00 p.m.*

*Wednesday, Nov. 30*

*Thursday, Dec. 8*

*Tuesday, Dec. 13*

# Join the Meditation Mob!

Tuesdays, 12:00 - 12:50

Want to learn more about mindfulness meditation? It's a great way to improve your attention and to become more grounded in the present moment.

There's no religious component. We use secular, evidence-based meditation techniques.

We meet in the small room just off the lounge in Winnett. All students are welcome, from total beginners to more experienced meditators.

Mailing list and MP3 archive:  
[counseling.caltech.edu/students/meditation](http://counseling.caltech.edu/students/meditation)



TOTEM Caltech's literary and visual arts magazine



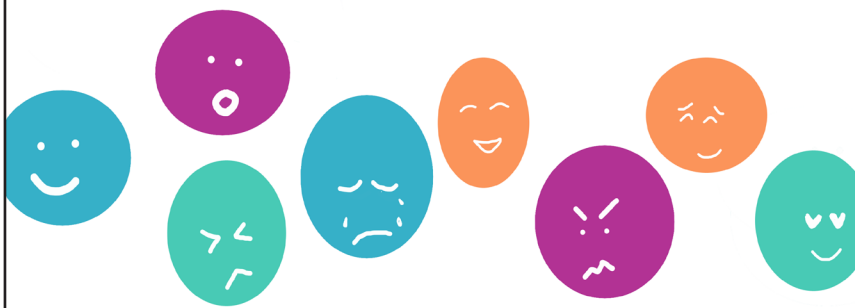
contest submission theme

**DEADLINE: January 8, 2017**

**What:** Submit visual and literary artwork to win a \$25 Amazon gift card, as well as publication in Totem and The Tech!

**Who:** Undergraduates, grad students, faculty, etc...anyone affiliated with Caltech!

Please send submissions and questions to [totem@caltech.edu](mailto:totem@caltech.edu).



## Project IDEA. inspire discover express accept. Caltech's creative assignment for your week.

Please send all responses to [totem@caltech.edu](mailto:totem@caltech.edu).

**What is something that interests you?**

**Make a playlist with at least eight songs for someone. A collection of music that makes you think of them when you hear the songs, or songs they might like. Send us the song names and who you chose them for.**

**Have you ever given up something? Given up on something?**

**Make a poster or banner of encouragement and hang it up. It can be for someone in particular or for anyone. Use at least 4 different colors and send us a picture.**

**Last week:** Write a letter giving advice to your past self and specify the age you are writing to. What is the smell you associate with home? What has changed you and how are you different? What has stayed the same? Draw a picture of someone else's dream and have them also draw their dream. Send us pictures of the drawings.

We will be updating Totem's facebook page, so check it out soon for more information (<https://www.facebook.com/CaltechTotem>)! And, feel free to send us responses from any week!

## Crossword

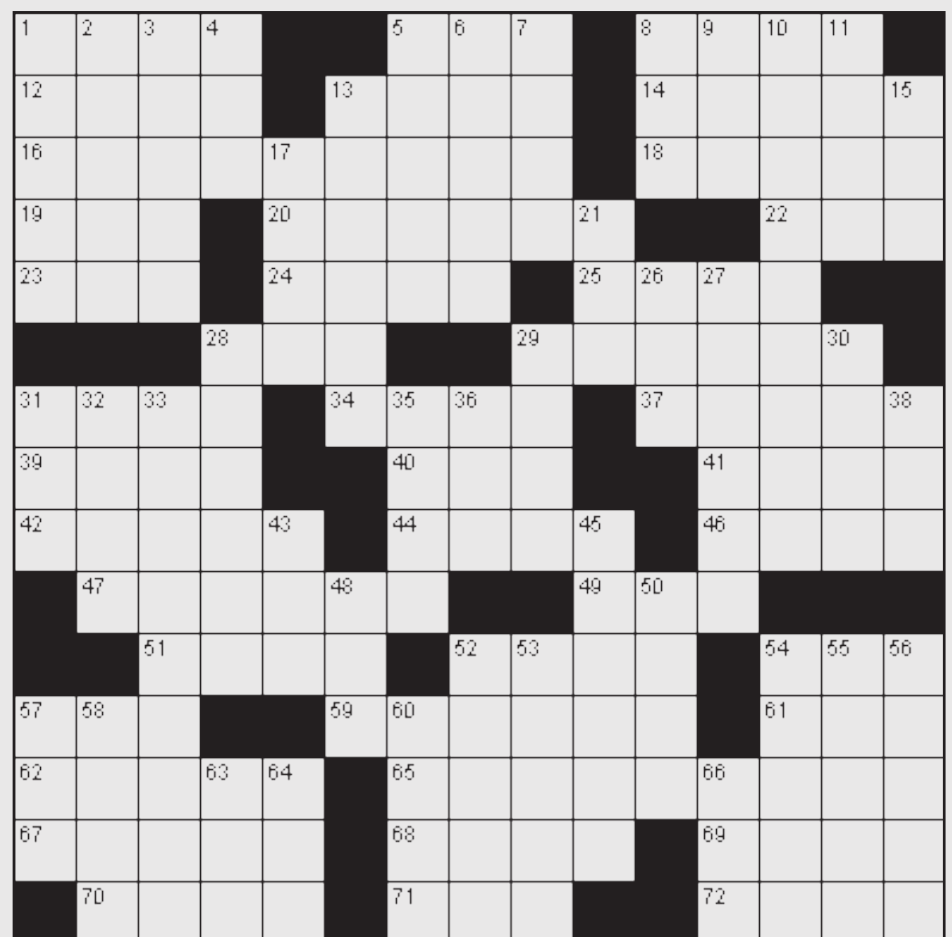
### Across

1. Infant
5. Entanglement
8. Gets stuck
12. Enticement
13. Edible tuberous root
14. Paragon
16. Newspaper column
18. Deep ravine
19. Assistance
20. Plate used to strengthen a joist
22. Drawing software, initially
23. Digit
24. Charge per unit
25. Alleviate
28. Lair
29. Sheep with high quality fleece
31. Pike-like fish
34. Fourth dimension
37. Face card
39. Overt
40. Aries symbol
41. Developed
42. Relating to the nose
44. Object of worship
46. Stringed instrument of ancient Greece
47. Boundaries
49. Historic period
51. Extinct bird
52. Feel concern or interest

54. Health spring
57. Employ
59. Anxiety disorder
61. Part of a cable railway
62. Relating to the kidneys
65. Cause to feel self-conscious
67. Mother-of-pearl
68. Assist
69. In addition
70. Faction
71. Plaything
72. Part of a hammerhead

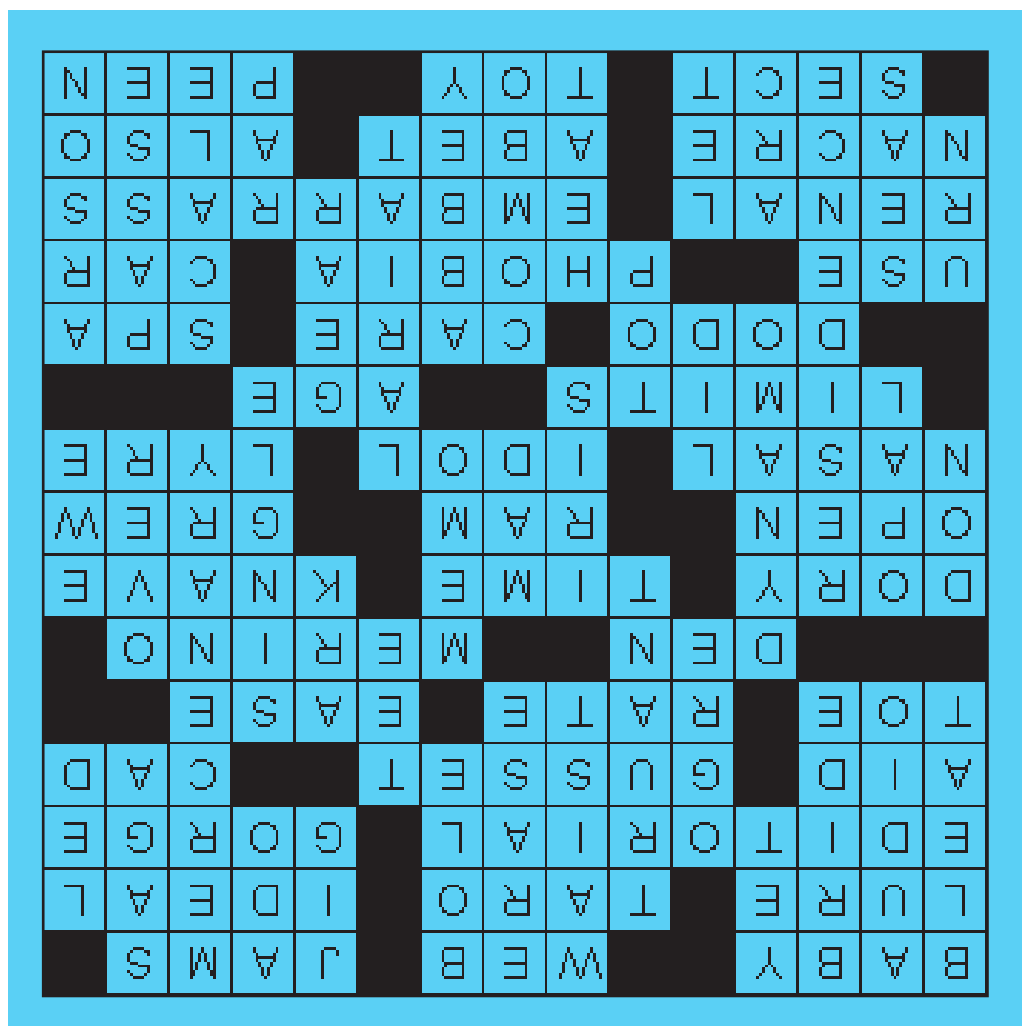
### Down

1. Cry plaintively
2. Sound
3. Newlywed woman
4. So far
5. Part of a shoe between heel and sole
6. Delete
7. Tree trunk
8. Fish lure
9. Fuss
10. Soldier of fortune
11. Heroic tale
13. Someone absent from school without permission
15. Guided
17. Fiend
21. Golf peg
26. Biblical boat
27. One
28. Generator
29. Note, in short
30. Finished
31. Spanish title
32. Opaque gem
33. Abode
35. Part of the eye
36. Insane
38. Female sheep
43. Cover
45. Lasso
48. Summit
50. Paraphernalia
52. Small jazz band
53. Church building
54. Relative magnitude
55. Out of fashion
56. Malicious burning
57. Large vase
58. Divisions of an ocean
60. Preliminary race
63. Part of a circle
64. Allow
66. Strike sharply



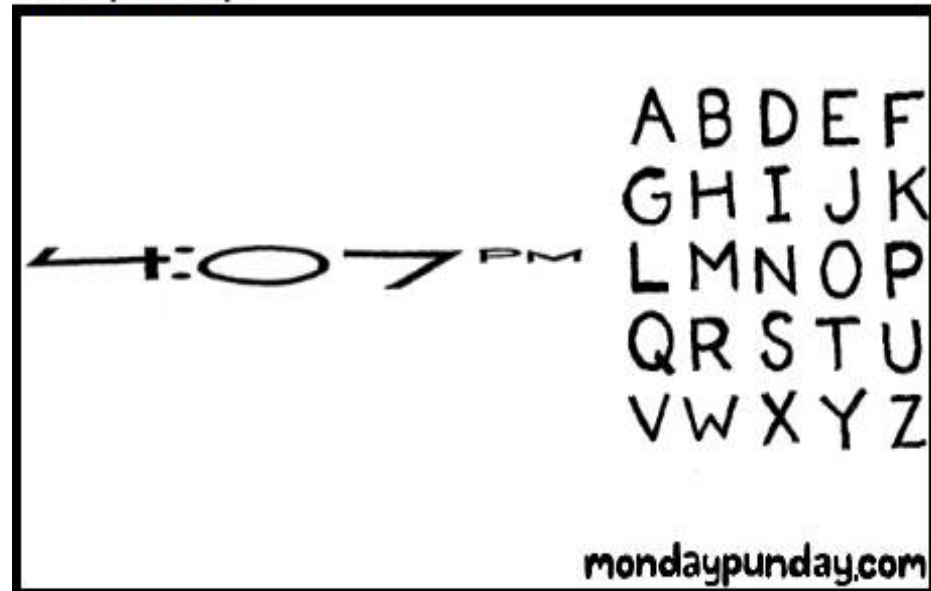
-<http://puzzlechoice.com>

Answers to current crossword (pg 7)



-<http://puzzlechoice.com>

Monday Punday

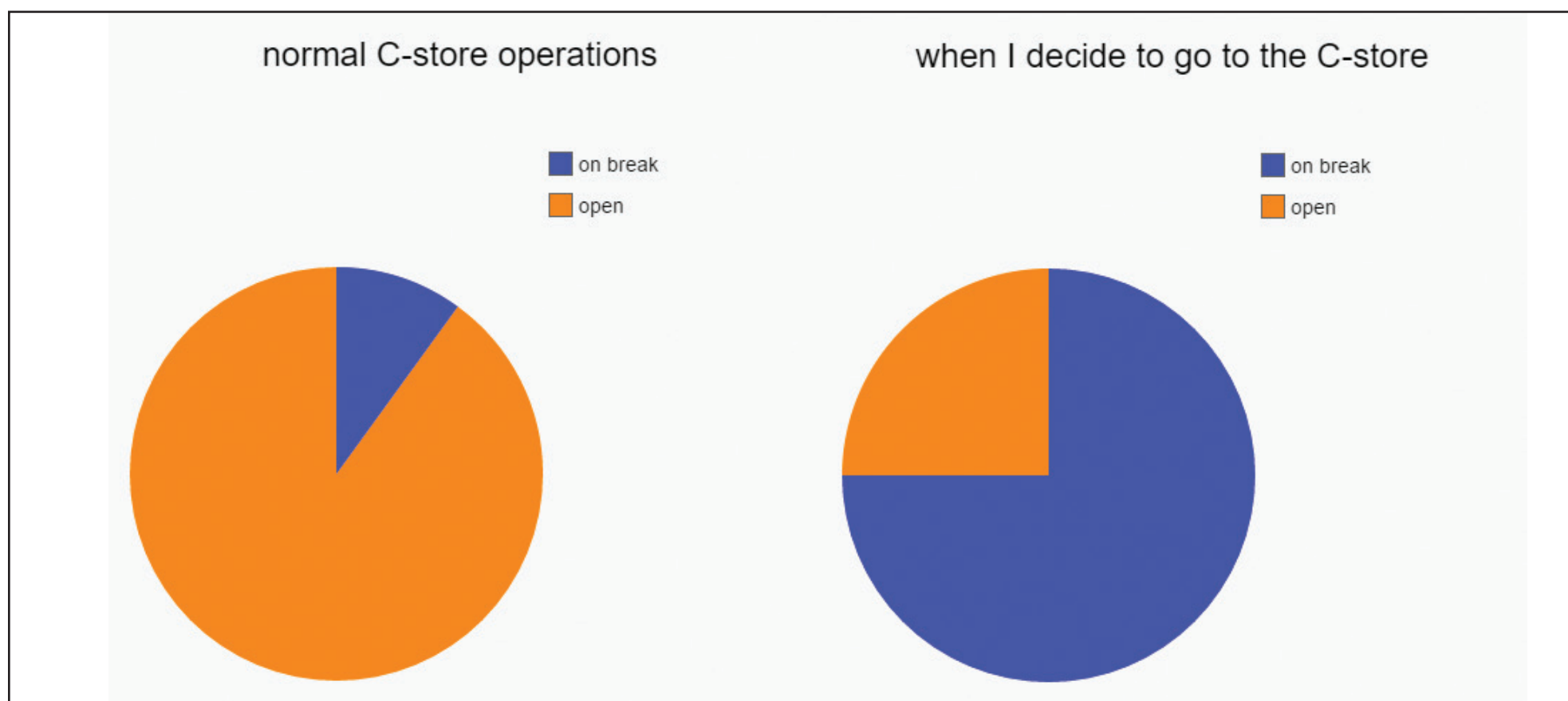


This picture represents a common phrase, title, or person.

Think you know the answer? Take a guess at [mondaypunday.com/290](http://mondaypunday.com/290)

A pie chart was the least efficient way to present this information

Oug



The California Tech  
 Caltech 40-58  
 Pasadena, CA 91125