

Lasciate
ogni
speranza,

THE CALIFORNIA TECH

Voic
ch'entrate

VOLUME LXXXIX NUMBER 1

PASADENA, CALIFORNIA

FRIDAY 25 SEPTEMBER 1987

Welcome To Caltech, Frosh

by Christina Garden

Welcome all newly arrived freshmen and transfer students to Caltech! Undoubtedly, your arrival at the finest and most high-powered science and engineering institution in the world will be the cause of many new changes in your lifestyle. These changes—new freedoms, new friendships, new experiences—will contribute to your growth as a person, as well as engender new stresses.

Not to worry. The workload will likely not be too heavy for the first couple of weeks, and the people of the greater Caltech area are known for their strong community spirit. In any case, your presence at Caltech exposes you to a world of opportunities not available to normal people (we're *ultranormal* people, by the way). First there is Frosh Camp: three days of fun in the sun under the guise of orientation. Rotation follows and, despite its shortcomings, it can be looked upon as a week long party. Caltech

is a special and unique place, so take advantage of these opportunities! Here is a chance for you to meet complete strangers for no reason other than mutual curiosity and friendliness under no unnatural social prerequisites and other complications. You will find that Techers share many interests and activities, yet their personalities are more diverse than one would expect. The backdrop of varied personalities provide an excellent opportunity for introspection. These opportunities disappear as close friendships develop and potential friendships fade away. Of course, many other opportunities—social, academic, spiritual, etc.—will present themselves in the years to come. Appropriately, these opportunities should also be taken advantage of.

In any case, now you should relax, meet people, and adjust yourself to life at Caltech. Take the time to get to know the Pasadena area—both its people and its places. And eat your vegetables and get to bed by eleven.

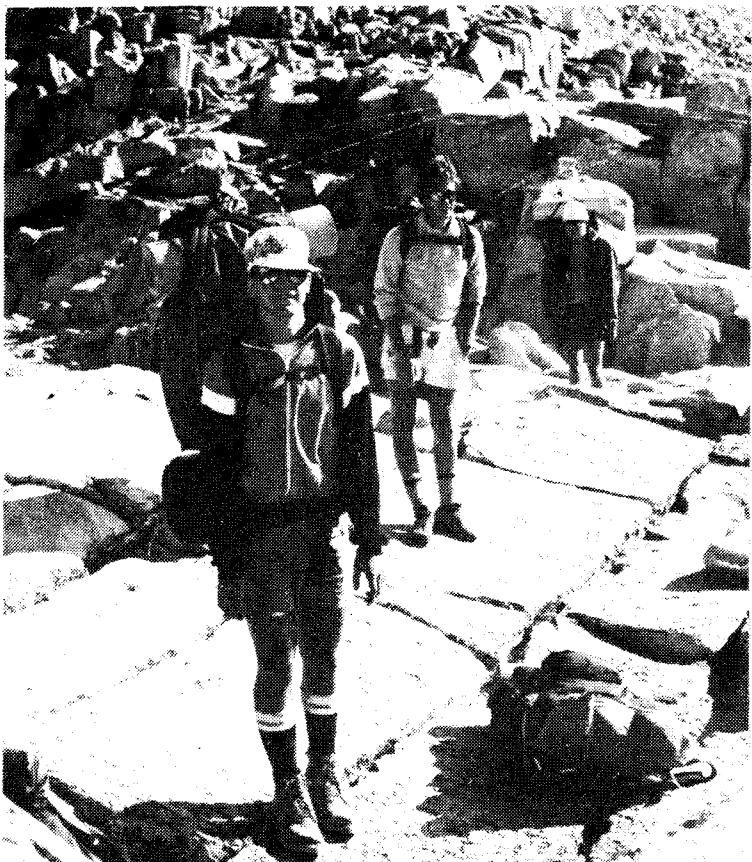


Photo by David Bruning

The Coffeehouse Users Group pose for a photo.



Allen Knutson prepares to cross a rocky promenade.



Backpacking photos courtesy of the Y

Paul Amadeo, Mark Montague and Andy O'Dea stand at attention in the Sierras.



Two backpackers commune with nature.

Y's Backpack Trip

by Joe Beckenbach

The Caltech Y began its yearly activities with its traditional Backpacking Trip. This year's hike took a total of fifty students and staff members into John Muir National Wilderness for five nights, from Tuesday, 15 September, until Sunday afternoon, 20 September.

Two strenuous and two intermediate groups travelled in opposite directions on two trails while the fifth group took day hikes out of a base camp part-way into the wilderness on a third trail. Each group filled two rented vans and carried their own food and shelter and filtered water from the streams and lakes near their campsites.

The "mellow" group spent its first night with Bibi Jentoft-Nilsen's intermediate group at Tour Jeffries Campground west of Bishop. After a short drive and two days of hiking.

After a short drive and two days of hiking, the mellow group set up

camp by George Lade. Here the four upperclassmen and five freshmen stayed, sallying around the lake and across the Table Mountain. As usual for the Y hiking trip the tasks of building evening campfires, filtering water, and constructing make-shift rafts fostered camaraderie and introduced new Techers to the old.

The only problems this year happened with the group on the strenuous hike that Seth Jelen led. No broken bones... just a flat tire after a side trip to see the Giant Sequoias.

A support group for the students at the Institute, the Caltech Y brings special events to campus. Some Y activities include movies, rental of backpacking gear, discounted tickets to some events in Los Angeles, and Decompression during finals' week. Stop by the office upstairs in Winnett to get more information or to offer your help.

Best Teachers at Tech

[CNB]—Six members of the Caltech faculty have received awards for teaching excellence from ASCIT. Selections were made by the Educational Policies Committee on the basis of student evaluations of courses taught during the academic year. The professors are evaluated on clarity, enthusiasm, command of the subject, rapport with the class, and interest in the students as individuals.

Commenting on the ASCIT awards, Caltech provost and vice president Barclay Kamb said, "There is no greater tribute a faculty member can receive than the approval and commendation of our most demanding critics—the undergraduate students."

The six faculty members honored by ASCIT are:

Donald Cohen, professor of applied mathematics, for the course "Introductory Methods of Applied Mathematics."

Dennis Dougherty, associate professor of chemistry, for the course "The Chemistry of Covalent Compounds."

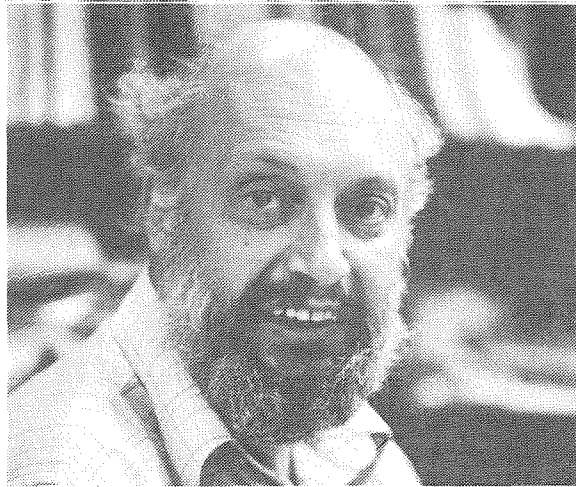
Valentina Lindholm, lecturer in Russian, for the course "Elementary Russian."

Thomas Prince, associate professor of physics, for the course "Waves, Quantum Mechanics, and Statistical Physics."

Jean-Paul Revel, professor of biology, for the course "Introductory Topics in Biology."

Thomas Tombrello, professor of physics, for the course "Quantum Physics."

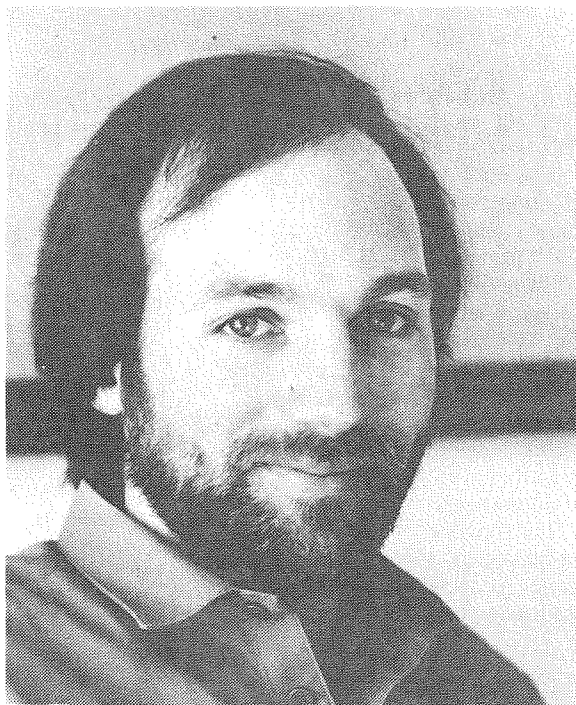
Faculty photos courtesy of Public Relations (Barbara Wirick) and Graphic Arts



Jean-Paul Revel, professor of biology



Valentina Lindholm, lecturer in Russian



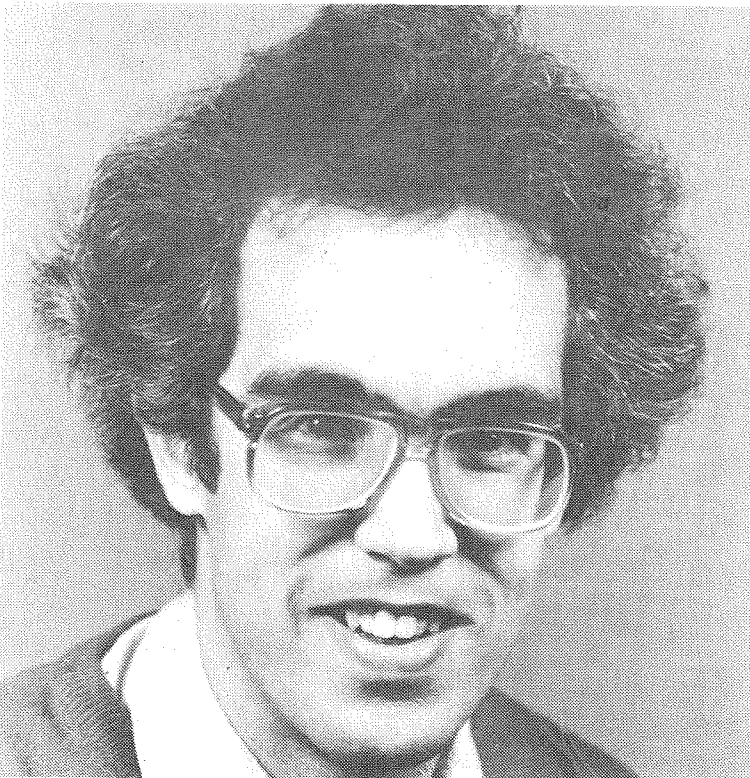
Dennis Dougherty, associate professor of chemistry



Tom Tombrello, professor of physics



Donald Cohen, professor of applied mathematics



Thomas Prince, associate professor of physics

THE CALIFORNIA TECH

Volume LXXXIX • Number 1
25 SEPTEMBER 1987

EDITORS

Ken Haynes • Michael Keating
Jennifer Low

ENTERTAINMENT

Help Wanted

PHOTOS

Help Wanted

SPORTS

Steve Bard

ANNOUNCEMENTS

Josh Kurutz?

REPORTERS

Help Wanted

THE INSIDE WORLD

Blacker:

Dabney: Al Petterson

Fleming:

Lloyd:

Page:

Ricketts:

Ruddock:

BUSINESS

David Goldreich

Gavin Claypool

PRODUCTION

Nick Smith

THE CALIFORNIA TECH

107-51 Winnett Student Center
California Institute of Technology
Pasadena, California 91125

Phone: [818] 356-6154

Published weekly except during examination and vacation periods by the Associated Students of the California Institute of Technology, Inc. The opinions expressed herein are strictly those of the authors.

Letters and announcements are welcome. All contributions should include the author's name and phone number and the intended date of publication. The Editors reserve the right to abridge and edit letters for expediency, literacy, or other.

Turn in copy (preferably on an IBM-compatible, WordStar-formatted floppy disk) to the Tech office mailbox, room 107 Winnett. The deadline for copy is Wednesday at 5PM; for announcements, Tuesday at 5PM. Late copy may not be printed even if prior arrangements have been made with the editors.

Subscription requests should be directed to the business manager. Rates are \$3.00 per term, \$8.00 per annum (three terms), \$100 per life.

Printed by News-Type Service, Glendale, California

ISSN 0008-1582

SERVING CALTECH
SINCE 1945

Authorized Agents for Airlines,
Hotels and Steamships

H. B. BENNETT
The
Finest in
Professional Travel
Services
(818) 795-0291
(213) 681-7885
CAMPUS EXTENSION
3091
TRAVEL AGENCY

690 E. GREEN ST.
PASADENA, 91101
(between El Molino & Oak Knoll)



OPEN HOUSE

Friday, October 2

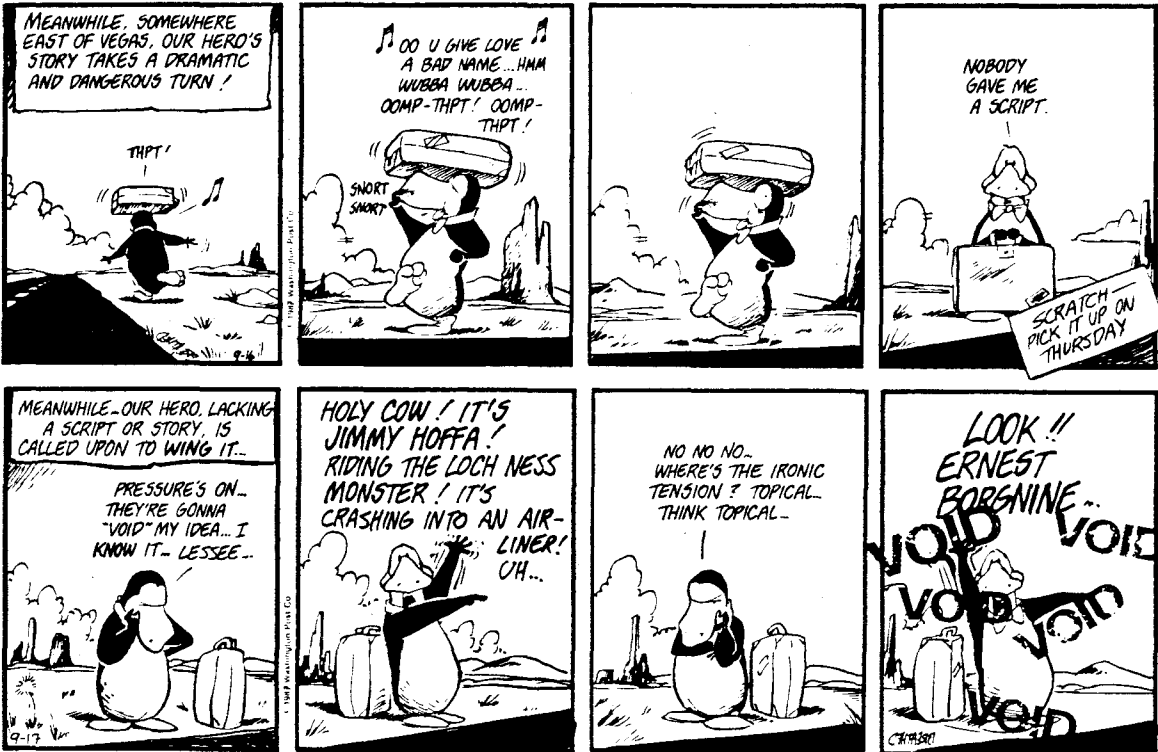
1-4 p.m.

Jorgensen

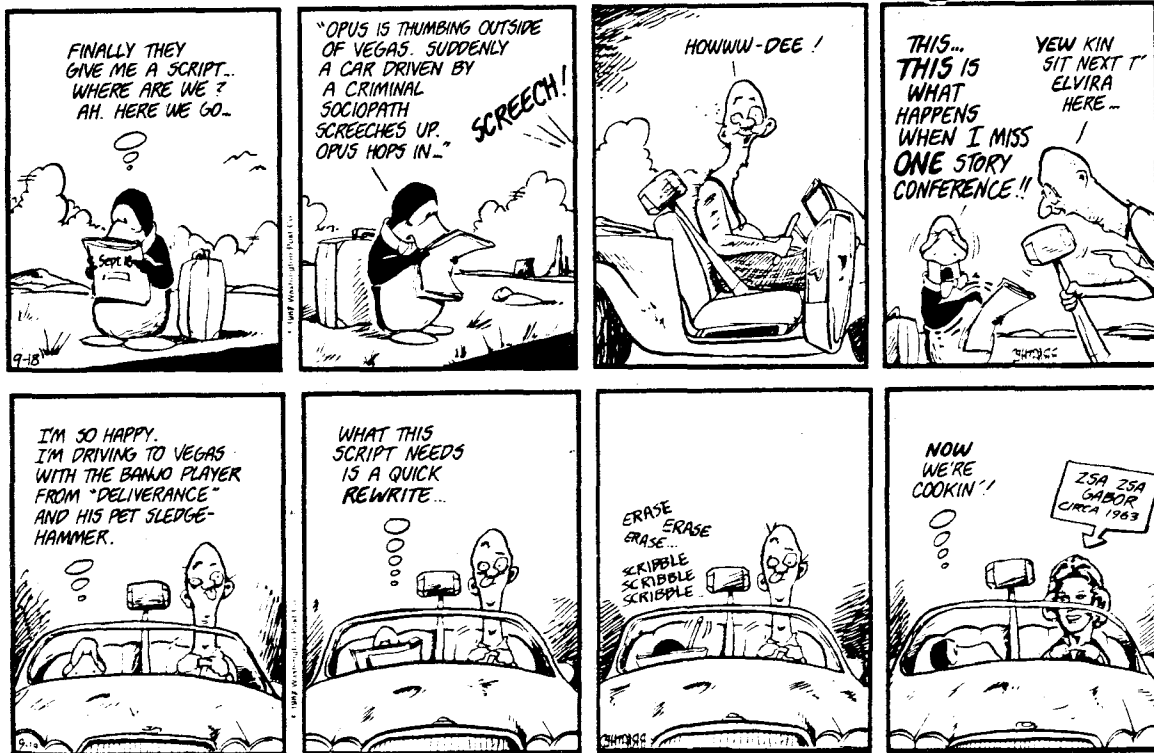


See the latest in PC
hardware and software

The Campus Computing Organization



Bloom County



continued on page 4

The Inside World

Dabney: Ten frosh wandered in. They looked at the walls and wondered. They saw the long hair, the bare feet, and wondered. They saw the darbs sitting in their "playpen" couches, in their hot tub, on their floors, sometime sleeping there, and wondered. They observed, because they were looking for it, the water-pipe in the corner, the different attitudes, the different lifestyles, the difference. That's all they saw.

Ten frosh wandered out. They explored the other houses. They listened attentively to the north-house upperclassman, to the rumours spread by those who "know," che sanno. They learned all the things that are said about the smallest house; they heard about the drugs, the weird shit, the decadence, the difference.

Then nine frosh made their decision.
The tenth frosh wandered back in.
The tenth frosh talked to a Darb.

-Al Petterson

Coffehouse Gasconade

Below is a "slice of life" conversation with the Coffeehouse Managers. The names and places in the Student Activities Center are real. The conversation has been changed to persecute the innocent. Read carefully and learn what really goes on during the off-hours of the Coffeehouse.

The Coffeehouse, one sunny afternoon, Coffeehouse Manager's meeting.

Earl: Hey guys, sorry I'm late. I got lost looking around. Isn't this new basement rad?

Barry: Heh, heh. Yeah, I got lost, too.

Steve: It's not that difficult, guys. It's the square around the courtyard, then some hallways that form an "E" on the west side.

Earl: Hm. Never thought about it that way.

Barry: Anyway, we've got work to do.

Steve: Let's head out to the courtyard. It's a nice day and I like the furniture.

Earl, Barry: (*Hems and hahs of agreement.*)

They settle in surrounded by sounds of birds chirping, workmen banging and air hockey careening in the picturesque Red Square.

Barry: We need garbage cans. I want to get some nice garbage cans that go nicely with the architecture.

Earl: How big?

Barry: Nice little cute ones.

Earl: Nah, we need big ones.

Steve: Yeah. Huge, hulking,

nuclear waste rated garbage cans. And some industrial strength liners.

Barry: No! I want cute garbage cans! By the way, what color liners?

Earl: Barry, you're such a yuppie.

Barry: So?

Steve: Anyway, we'll come back to this. What about FOOD?

Barry: What about it?

Steve: What's hot?

Barry: The fajitas are selling like wildfire.

Earl: And I'm happy with the shakes. Most of the are passing the "Test".

Steve: What "Test"?

Earl: The inversion test. You take a shake and turn it upside-down and if it doesn't move it passes the test.

Barry: Awesome!

Michael Keating (*from the Tech office*): Hi guys, what's up?

Steve: Just a meeting for the Coffeehouse.

Michael: Kin I git a shake? Y'all are just sittin' around when you could be serving a payin' customer.

Earl: Sorry, Mike. We don't open 'til eight.

Michael: Oh. See ya later.

Earl, Steve, Barry: (*Various parting yells*)

Nancy, the Student Activities Coordinator (*entering the courtyard*): Hi Guys. Did you notice that our Aphrodite shipment is in?

continued on page 4

To: College Students

From: Circuit City

Cash For Christmas!

Circuit City is the billion dollar retailer of brand name audio, video, car stereo and major appliances. As we approach our busiest time of the year, we're looking for FULL and PART-TIME seasonal help.

Students love our holiday employment opportunities because we offer:

- Full and part-time openings to fit your schedule
- Great salaries to help pay your college expenses
- An opportunity for advancement within our expanding retail organization

NOW HIRING FOR THE FOLLOWING SEASONAL OPENINGS

• Audio/Video/Car Stereo Sales Counselors	• Cashiers
• Car Stereo Installers	• Receptionists
• Warehouse	• Customer Service Clerks
• Credit Clerks	

There's a great employment opportunity just waiting for you at Circuit City.

Apply in person on October 3-10 (except Sunday) from 9am-6pm at the **Circuit City Hiring Center at Best Western's Westerner Inn, 161 Colorado Place in Arcadia.**

CIRCUIT CITY

39 N. Rosemead
Pasadena, California

Equal Opportunity Employer

Education is too priceless to let a thing like money get in the way.

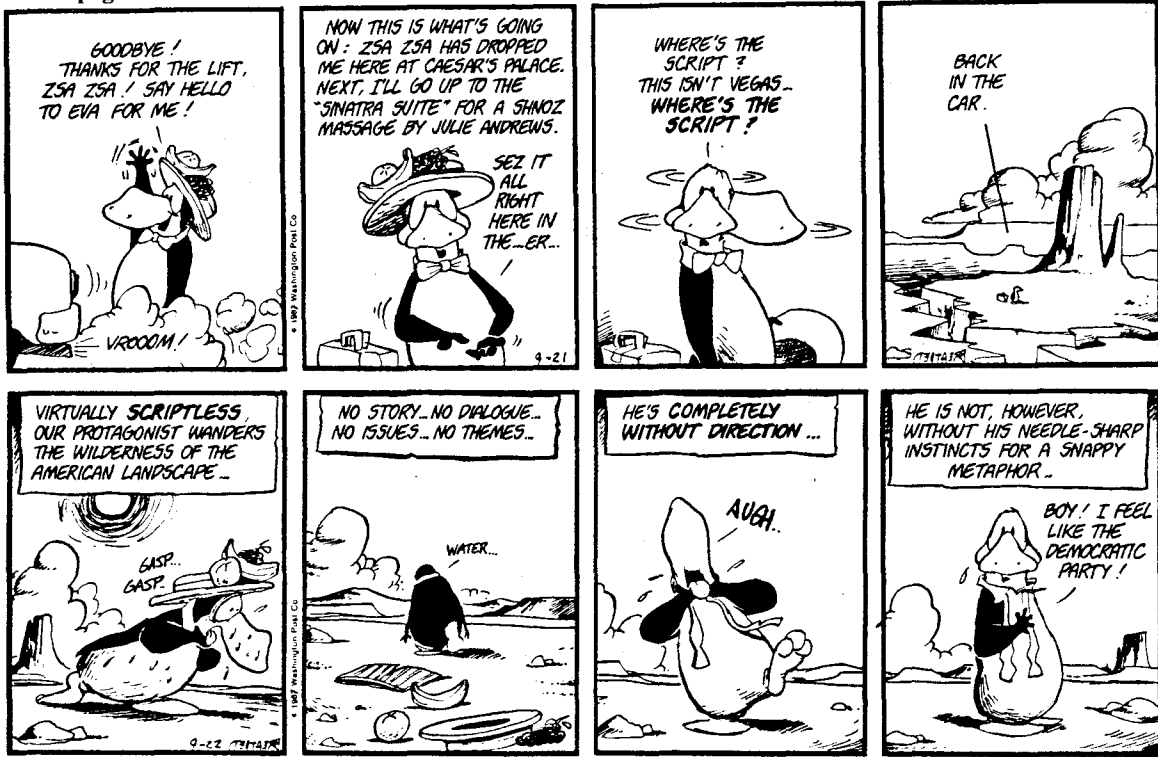
If you're a full-time, half-time or graduate student, Glendale Federal can help you get a California Guaranteed Student Loan (GSL). Or a California Loan to Assist Students, (CLAS) SLS/PLUS.

For additional information and an application, talk to your Financial Aid Counselor or call Glendale Federal's Student Loan toll-free number (800) 344-7030.

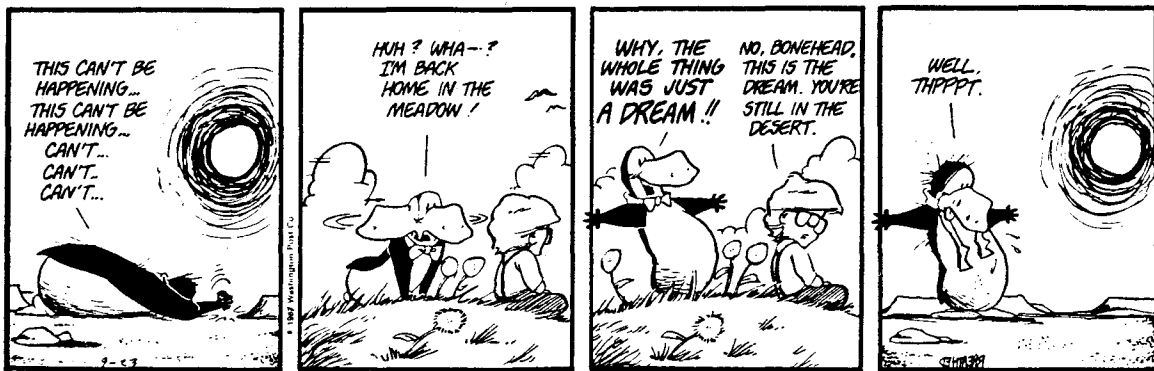
GLENDALE FEDERAL STUDENT LOANS

© 1987 Glendale Federal Savings and Loan Association.

from page 3



by Berke Breathed



continued on page 9



“Knowledge is of two kinds. We know a subject ourselves, or we know where we can find information upon it.”

Boswell, *Life of Johnson* (1775)

You can find a wealth of information from the Federal Government at Depository Libraries. Contact your local library.

CIA... where your OPTIONS

If you're looking for a professional environment that will expand your options, not limit them, you should consider a career with the Central Intelligence Agency.

are as diverse as your interests

(both self and spouse), and successfully meet our strict medical and security requirements.

We seek enthusiastic engineering majors who are interested in international affairs as well as the interplay of politics, history and economics in the affairs of mankind and nations... individuals who will make the most of their talents in a wide variety of challenging CIA positions.

An entire spectrum of opportunities is yours to explore... opportunities as diverse as your own interests, as exciting as your curiosity. And all our career options come with the intellectual stimulations and excellent growth potential you need for a rewarding professional life. To qualify for a CIA career, you must have a Bachelor's or Master's degree or a PhD, be a U.S. citizen



The CIA offers highly competitive compensation, liberal benefits, and the consistent challenges inherent in a diverse environment. In addition, our location just outside the Washington, D.C. area provides you with an abundance of leisure-time options such as cultural events, athletic bouts, and historic attractions.

Literature is available for review at your Career Development Center.

To explore your options with the CIA, send your resume to:

Personnel Representative C21
P.O. Box 3127
South El Monte, CA 91733

Resumes must be received by 9 October 1987 for Fall interviews.

Central Intelligence Agency

The CIA is an Equal Opportunity Employer

Gasconade

from page 3

Earl: You mean that heavenly cheesecake and that absolutely sinful pie?

Nancy: Yeah!

Earl: I didn't notice. (*angelic grin*)

Steve: Me neither.

Barry: But we will (*evil grin*).

Heh, heh, heh.

Nancy: (*chuckle*) OK. I'll see you guys later.

Earl: Hey guys, we also need waiters for the school year.

Barry: Oh. Yeah we do.

Steve: How many do we have?

Earl: Not enough. We need at least fourteen. I would like to have twenty-eight so we can split the shift in half.

Barry: Sounds good.

Steve: Let's put something in

the Tech to get people interested in waiting.

Earl: Good idea.

Barry: What about the grand Opening?

Earl: It's October 9th.

Steve: It's going to be a total blowout!

Barry: Sort of like the Blue Nova table.

Earl, Steve, Barry: (*Loud explosions of mirth*).

Steve: Well guys, I'll be getting along to work on the ad for the Tech.

Earl, Barry: (*More parting yells*).

Earl: Hey Barry, why don't we go watch a movie on the big screen TV?

Barry: Yeah. Plop down on all those pillows, watch Star Wars on a 46" screen with those two extra speakers. Wraparound sound—Ahhhh.

Earl: Well, let's do it!

ENTREPRENEURS

Plan on being one?

Working with one as a professional?

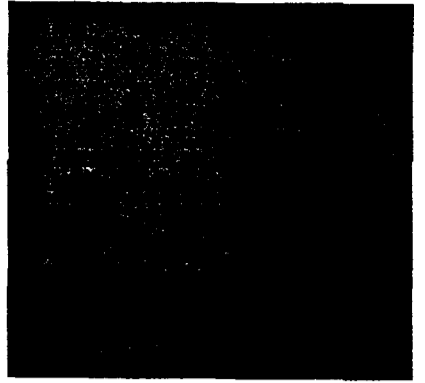
The Los Angeles Entrepreneurship Academy is looking for high-potential students, graduate or undergraduate, any major, to participate in a two-semester program that will include:

- meetings with successful local entrepreneurs
- hands-on experience and internships
- inside looks at local industries
- training and experience in networking, goal setting, and sales

The academy is a non-profit organization founded and administered by over 35 Los Angeles business and community leaders.

For more information, call Maureen Ford at: (213) 590-8011.

THE CALTECH COFFEEHOUSE IS BACK!



The Coffeehouse is back in a *BIG* way. All you folks who enjoyed the old Coffeehouse will find that your favorite place to eat is better than ever, with a spanking-new kitchen and dining area. Across *Rad Red Square* is the Game Room with some of the best video games and pinball machines around, plus Air Hockey. Come sprawl across the ocean of pillows in our new TV room with VCR, videodisc player and big movie selection.

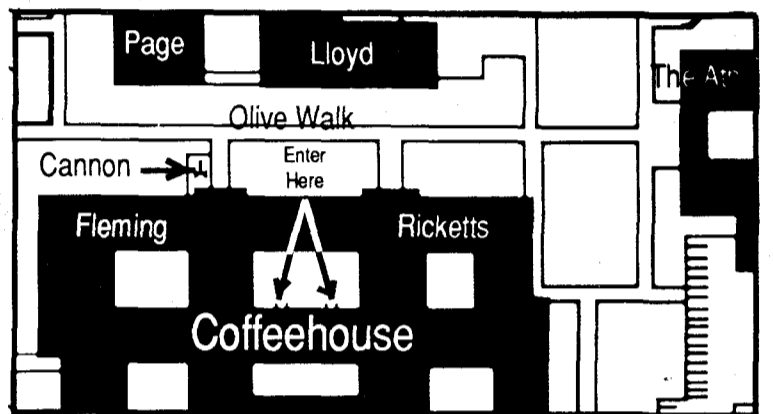
All you new Techers will learn that there is no better way to relax during a night's study than to chow down on a Joe burger, a pile of fries, and a shake that won't hit the floor even if you turn it upside-down.

Try out the crossword puzzle. It's nothing fancy and it's something fun to do in your spare time (or on a boat ride, Frosh). All the words have something to do with the Coffeehouse. Then bring it on down and get a 10% discount on your order. It's all located in the new Student Activities Center. Hours: 8pm-1am, Monday through Sunday. Special Rotation hours: 10pm-1am.

Down

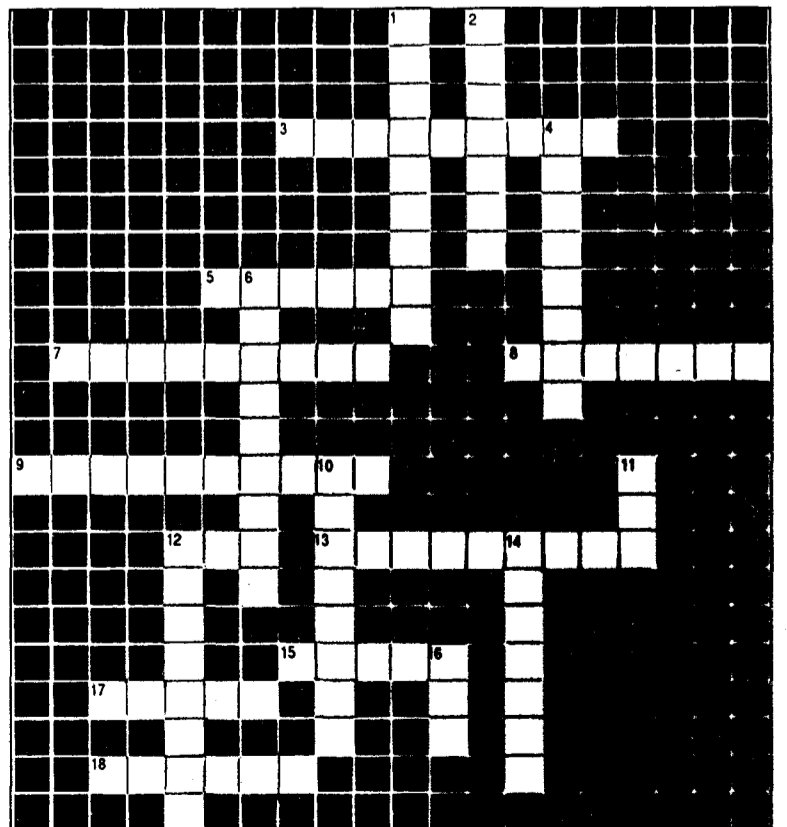
- 1 Visual CD player
- 2 You can get our cold drinks from the tap, cans, or -----
- 4 A tea like one of the managers on a dusty day
- 6 A greek goddess who inspires desire, as do our desserts
- 10 Deep fried mushrooms, deep fried cheese sticks, and deep fried -----
- 11 The ultimate burger— a triple chili cheese baconburger
- 12 Hot star explosion
- 14 Ultimate example of pinball
- 16 Movie-watching device

MAP



Across

- 3 Fizz from the Big Apple
- 5 Appetizer with cheese
- 7 It passes the test
- 8 Ace submarine marksman
- 9 Deluxe ice cream
- 12 Well-known sandwich with bacon
- 13 Caterpillar has fewer legs
- 15 Occupies room directly East of the Coffeehouse
- 17 Heavy noble gas of a game
- 18 These you watch on 15 across



Rotation

Freshman

	SUN	MON	TUE	WED	THU	FRI	SAT		SUN	MON	TUE	WED	THU	FRI	SAT
OLIVER ROBERT	Bl	Li	Da	Pa	Ri	Fl	Ru	GASS JOHN H	Ru	Pa	Fl	Ri	Bl	Li	Da
ABEL MARC W	Ru	Pa	Da	Li	Fl	Ri	Bl	GERAGHTY DAVID F	Pa	Li	Ru	Bl	Da	Ri	Fl
AHERN SEAN C	Ri	Da	Ru	Fl	Li	Pa	Bl	GITLIN GRAHAM N	Bl	Fl	Ri	Da	Pa	Ru	Li
AHLE LARRY E	Ri	Li	Fl	Pa	Da	Ru	Bl	GUTIERREZ ROMAN C	Fl	Da	Li	Bl	Ru	Ri	Pa
AHMED GHUFRAN	Pa	Ri	Li	Fl	Bl	Ru	Da	HAGEN JEFFREY P	Li	Bl	Pa	Ru	Da	Ri	Fl
AHMED SALIM	Bl	Li	Da	Pa	Ri	Ru	Fl	HAINING RORKE E	Bl	Fl	Pa	Li	Da	Ri	Ru
AHN MYRON D	Fl	Ru	Li	Ri	Da	Pa	Bl	HARKNESS STEVEN M	Ru	Bl	Ri	Pa	Li	Da	Fl
AKAMA KEITH T	Fl	Li	Bl	Ri	Pa	Da	Ru	HARRIS SCOTT R	Ru	Bl	Pa	Fl	Ri	Da	Li
AMEZCUA CARLOS D	Li	Fl	Pa	Ri	Da	Ru	Bl	HAYNES KENNETH	Ru	Bl	Ri	Pa	Li	Da	Fl
BALL FRANCIS M	Pa	Li	Da	Ru	Ri	Fl	Bl	HELLNER ERIN G	Da	Ri	Fl	Bl	Ru	Li	Pa
BAUMERT BRANDON M	Pa	Fl	Li	Da	Ru	Ri	Bl	HIETER NATHANIEL D	Da	Pa	Ru	Bl	Ri	Li	Fl
BERNSTEIN GOLDA	Ri	Bl	Da	Pa	Li	Fl	Ru	HIGLEY JAY W	Li	Fl	Ru	Pa	Da	Bl	Ri
BHAVSAR MEETEN	Da	Li	Ri	Fl	Ru	Pa	Bl	HODSDEN MARY K	Li	Da	Fl	Pa	Bl	Ri	Ru
BITTKER SETH S	Li	Ri	Fl	Pa	Ru	Da	Bl	HOLLAND BENJAMIN S	Bl	Pa	Ri	Fl	Ru	Da	Li
BLAKE CHARLES L	Ru	Pa	Ri	Da	Li	Fl	Bl	HOLMES JACQUELINE	Ri	Li	Pa	Bl	Fl	Ru	Da
BOCHNER BRETT D	Ri	Pa	Fl	Li	Ru	Bl	Da	HOLT GARY R	Ri	Ru	Da	Bl	Pa	Li	Fl
BOURGEOIS DAVID M	Li	Ru	Pa	Ri	Bl	Fl	Da	HOSKINS JOHN R	Bl	Ri	Ru	Fl	Da	Pa	Li
BURROWS HERBERT	Da	Ru	Ri	Pa	Fl	Bl	Li	HOWARD SUSAN R	Ru	Li	Ri	Pa	Bl	Fl	Da
CAMPMAN KENNETH L	Pa	Bl	Fl	Ru	Li	Ri	Da	HSU RICHARD	Ru	Li	Bl	Ri	Fl	Pa	Da
CAMPO CHRIS J	Ri	Pa	Bl	Da	Li	Ru	Fl	HUMAYUN FARUKH	Ru	Li	Pa	Ri	Da	Bl	Fl
CANDELL ERIC M	Bl	Ri	Ru	Li	Pa	Fl	Da	HWAN STEPHEN V	Li	Ru	Fl	Bl	Da	Ri	Pa
CANINO LAWRENCE S	Fl	Bl	Ri	Pa	Ru	Li	Da	IDA MICHAEL P	Ru	Li	Bl	Da	Pa	Fl	Ri
CAROSELLI JOSEPH P	Bl	Fl	Li	Ri	Ru	Pa	Da	IZUMI YAYOI	Li	Pa	Ri	Bl	Da	Ru	Fl
CATRAKIS CHARILAOS	Fl	Pa	Ru	Ri	Li	Bl	Da	JAGADEESH BHARATHI	Li	Pa	Fl	Bl	Ri	Da	Ru
CHAMNESS MARK A	Bl	Ru	Li	Da	Pa	Ri	Fl	JAMES GREGORY A	Da	Pa	Ru	Li	Bl	Fl	Ri
CHEN ALECIA J	Fl	Da	Ri	Pa	Li	Ru	Bl	JAQUEZ EDWARD J	Da	Pa	Li	Bl	Fl	Ru	Ri
CHEN LEONARD P	Bl	Pa	Da	Ru	Li	Ri	Fl	JOH JENNIFER J	Fl	Pa	Li	Da	Ru	Bl	Ri
CHEN TIM Y	Ri	Da	Li	Ru	Pa	Bl	Fl	JOHNSON ERIC C	Bl	Ru	Pa	Li	Ri	Da	Fl
CHENEY DOUGLAS C	Da	Ri	Pa	Li	Bl	Ru	Fl	JONES WILLIAM M	Ru	Da	Fl	Pa	Ri	Bl	Li
CHENG HELEN H	Pa	Fl	Bl	Li	Ri	Da	Ru	JUN STEVE	Ru	Bl	Li	Ri	Fl	Da	Pa
CHENG LARRY	Pa	Ru	Ri	Li	Da	Bl	Fl	KASSAN ERIC M	Ri	Bl	Li	Da	Ru	Pa	Fl
CHIN SYLVIA P	Pa	Ru	Da	Fl	Bl	Ri	Li	KATZ ROSTEN PAMELA	Ru	Fl	Da	Bl	Ri	Li	Pa
CHOU MIKE T	Fl	Ri	Da	Ru	Pa	Bl	Li	KENY HEMANT V	Li	Bl	Fl	Ru	Pa	Da	Ri
CHOW JONATHAN K	Li	Ri	Bl	Ru	Fl	Da	Pa	KHAN ZULFIQAR H	Ri	Ru	Bl	Da	Fl	Li	Pa
COOK CHARLES B	Bl	Li	Pa	Ru	Fl	Da	Ri	KIEFER THOMAS G	Pa	Fl	Da	Ri	Li	Bl	Ru
CORCORRAN ALLEN M	Pa	Fl	Ri	Ru	Bl	Li	Da	KIM DAVID K	Pa	Ri	Ru	Da	Li	Bl	Fl
CORDES JOHN	Da	Ru	Bl	Ri	Li	Fl	Pa	KIM DONG-SU	Ri	Ru	Li	Fl	Da	Bl	Pa
COUFAL DAVID E	Da	Li	Ru	Ri	Bl	Pa	Fl	KIM JINHA	Fl	Ru	Da	Pa	Bl	Li	Ri
CRAFT BRIAN A	Bl	Ri	Da	Pa	Ru	Fl	Li	KIM KEANA F	Pa	Da	Bl	Ru	Li	Fl	Ri
CRIM WALTER W	Fl	Pa	Li	Ru	Ri	Da	Bl	KING ADAM J	Fl	Pa	Bl	Ri	Da	Ru	Li
CURTIS KEVIN	Pa	Bl	Da	Fl	Li	Ru	Ri	KIRBY TARA L	Ri	Bl	Fl	Ru	Da	Pa	Li
DAILEY MARK	Fl	Bl	Pa	Da	Li	Ri	Ru	KIRILL DIMITRI J	Ru	Li	Fl	Da	Bl	Ri	Pa
DATTA RUCHIRA	Li	Da	Pa	Fl	Bl	Ru	Ri	KISTER SCOTT R	Bl	Pa	Fl	Li	Da	Ru	Ri
DEEM MICHAEL W	Fl	Bl	Ru	Ri	Da	Li	Pa	KNOX MELINDA A	Li	Pa	Bl	Ri	Ru	Da	Fl
DESAI SAYURI	Li	Pa	Ru	Fl	Da	Ri	Bl	KO KWANGHYON T	Da	Li	Pa	Bl	Ri	Fl	Ru
DINAN MARK A	Ru	Da	Bl	Pa	Fl	Li	Ri	KOEHLER JEFFREY A	Bl	Da	Ri	Ru	Fl	Li	Pa
DINKIN SAMUEL H	Fl	Li	Ru	Da	Pa	Ri	Bl	KOLLMORGEN DANIEL	Fl	Li	Bl	Da	Ri	Ru	Pa
DOLIM SCOTT M	Pa	Ru	Li	Ri	Bl	Da	Fl	KOSHI RICK H	Ri	Fl	Pa	Bl	Ru	Da	Li
DUBB LINDSEY N	Pa	Bl	Ru	Da	Fl	Ri	Li	KRIDER DAVID W	Pa	Bl	Li	Da	Ri	Fl	Ru
DUTTON IAN R	Da	Fl	Ri	Ru	Li	Bl	Pa	KRIKORIAN YOGHISH	Fl	Ri	Ru	Pa	Bl	Da	Li
EASTVEDT GARY M	Ru	Ri	Fl	Li	Da	Pa	Bl	KUO YU-HUNG	Pa	Bl	Da	Li	Ru	Ri	Fl
EDWARDS DAVID A	Bl	Da	Pa	Ri	Ru	Li	Fl	KUROSUKY TANYA K	Fl	Da	Ri	Ru	Bl	Pa	Li
EHLERS MICHAEL D	Ru	Da	Li	Bl	Ri	Pa	Fl	KWAN MICHAEL	Da	Fl	Bl	Pa	Ri	Ru	Li
FARNHAM LLOYD A	Ri	Fl	Li	Da	Bl	Ru	Pa	LAI JANET	Bl	Li	Ri	Ru	Da	Pa	Fl
FERBER ROBERT R	Bl	Da	Ru	Fl	Pa	Li	Ri	LAL AMIT	Bl	Ri	Li	Ru	Da	Fl	Pa
FINLEY BENJAMIN E	Pa	Li	Ru	Ri	Fl	Da	Bl	LAWYER K J	Ru	Ri	Da	Fl	Li	Bl	Pa
FINLEY DIANA J	Da	Fl	Ru	Li	Ri	Pa	Bl	LE NGOC DIEP T	Ru	Da	Bl	Li	Ri	Fl	Pa
FIOLA THOMAS M	Li	Bl	Da	Ri	Pa	Ru	Fl	LEBORGNE WILLIAM E	Da	Bl	Ri	Ru	Pa	Li	Fl
FLOWERS KIM D	Da	Fl	Bl	Li	Ru	Ri	Pa	LEE ANITA K	Ri	Li	Da	Fl	Pa	Bl	Ru
FORMAN SELENA	Pa	Da	Fl	Li	Ri	Ru	Bl	LEE EVERETT E	Li	Da	Ru	Fl	Ri	Bl	Pa
FREEMAN ERIK S	Bl	Da	Fl	Ru	Pa	Ri	Li	LEE KYUNG W	Li	Da	Ri	Pa	Ru	Bl	Fl
FUNG ERIC T	Da	Bl	Li	Pa	Ru	Fl	Ri	LIN DAVID J	Ru	Ri	Fl	Bl	Pa	Da	Li
								LIN RALPH S	Da	Bl	Ri	Li	Fl	Ru	Pa
								LIT EUGENE S	Pa	Ru	Li	Bl	Da	Fl	Ri
								LIU CALVIN J	Bl	Li	Fl	Da	Ri	Pa	Ru

Rotation

Rotation

	SUN	MON	TUE	WED	THU	FRI	SAT
LO EMILY I	Da	Ri	Bl	Ru	Li	Pa	Fl
LOESCHER MITCHELL	Li	Bl	Ru	Pa	Ri	Fl	Da
LOFQUIST DAVID R	Ru	Da	Bl	Ri	Pa	Li	Fl
LOH YUN-FONG	Li	Fl	Da	Ru	Bl	Ri	Pa
LONG DAVE	Pa	Da	Ri	Li	Bl	Fl	Ru
LU TSUNG-HSIN	Ri	Pa	Ru	Bl	Li	Da	Fl
LUCKEY ROBIN E	Ri	Ru	Da	Li	Bl	Fl	Pa
LYTTLE MARK T	Da	Ri	Bl	Fl	Pa	Li	Ru
MACARTNEY-FILGATE BRUCE C	Da	Li	Bl	Pa	Fl	Ri	Ru
MAHESHWARI VIJAI	Li	Fl	Bl	Da	Pa	Ri	Ru
MAJEED RAIF	Li	Bl	Ri	Da	Ru	Fl	Pa
MALONEY MATTHEW T	Li	Ri	Da	Bl	Pa	Fl	Ru
MANNING RUSSELL A	Ru	Ri	Bl	Pa	Da	Li	Fl
MARKARIAN MARK N	Li	Ru	Da	Ri	Fl	Bl	Pa
MAXFIELD HEATH	Li	Da	Ru	Bl	Fl	Pa	Ri
MCDONALD MIGUEL K	Ri	Da	Bl	Fl	Pa	Ru	Li
MCKENZIE DWAYNE P	Ri	Da	Fl	Bl	Li	Ru	Pa
MCLAUGHLIN STEVEN A	Bl	Da	Li	Pa	Ru	Ri	Fl
MERRILL DAVID J	Da	Ru	Fl	Pa	Li	Ri	Bl
MIKOLAJCZAK CELINA J	Li	Ru	Pa	Da	Bl	Ri	Fl
MILLER DAVID E	Fl	Bl	Da	Li	Ri	Pa	Ru
MITCHELL WILLIAM	Fl	Li	Da	Pa	Ri	Bl	Ru
MLYNAR THEODORE J	Bl	Ru	Pa	Da	Li	Fl	Ri
MOSSEY MICHAEL P	Da	Bl	Ru	Fl	Li	Ri	Pa
MOUSTAKAS ARIS	Fl	Pa	Da	Ri	Ru	Li	Bl
MUKHERJI ASHOKE A	Ri	Li	Ru	Fl	Bl	Da	Pa
MYERS CHRISTOPHER J	Li	Ru	Ri	Bl	Fl	Da	Pa
MYJAK MIRIAM A	Fl	Bl	Li	Ru	Da	Ri	Pa
NAGY SANDOR	Fl	Ru	Da	Bl	Li	Ri	Pa
NEWMAN ERIC C	Da	Bl	Ru	Ri	Pa	Fl	Li
NG JIMMY K	Da	Ru	Bl	Li	Pa	Ri	Fl
OHANISSIAN ANDRE	Ru	Fl	Bl	Pa	Li	Ri	Da
OHTAKE TADAIRO	Pa	Ri	Da	Bl	Li	Ru	Fl
PADUANO MATTHEW C	Da	Fl	Pa	Ri	Bl	Li	Ru
PADULA ROBERT J	Fl	Ri	Ru	Da	Bl	Li	Pa
PALM STEVEN L	Li	Ru	Da	Bl	Ri	Fl	Pa
PANG DANIEL	Bl	Li	Fl	Ru	Ri	Da	Pa
PAPADOPOULOS ANNETTA M	Da	Li	Ru	Ri	Fl	Bl	Pa
PARK DAVID J	Ru	Fl	Da	Ri	Bl	Pa	Li
PAUL WESLEY J	Ru	Li	Bl	Da	Ri	Pa	Fl
PAVRI BETINA	Fl	Ri	Bl	Da	Ru	Pa	Li
PETERSON DAVID M	Fl	Ri	Pa	Bl	Da	Li	Ru
PETERSON DOUGLAS E	Pa	Da	Ru	Bl	Ri	Fl	Li
PHAM BAOQUOE N	Ru	Bl	Fl	Li	Ri	Da	Pa
PHAM HOANG X	Pa	Fl	Bl	Ru	Da	Ri	Li
PHAN TAN	Li	Ri	Fl	Da	Ru	Bl	Pa
POTTENGER MICHAEL D	Da	Ru	Li	Ri	Pa	Bl	Fl
PRATER JACK L	Pa	Li	Fl	Ru	Da	Bl	Ri
PRICE ALLEN C	Ri	Fl	Li	Bl	Da	Pa	Ru
RAGUIN JOHN V	Ru	Bl	Pa	Li	Da	Fl	Ri
RAM RAJEEV J	Ru	Fl	Bl	Ri	Da	Li	Pa
RAMIREZ CARLOS	Bl	Ru	Da	Li	Fl	Pa	Ri
RANKA JINENDRA	Da	Ru	Fl	Bl	Ri	Pa	Li
RHOADARMER DAVID D	Li	Da	Bl	Ru	Ri	Pa	Fl
RICCI MICHAEL R	Ru	Fl	Li	Pa	Bl	Da	Ri
RICHARDSON PETER	Ri	Bl	Fl	Li	Da	Ru	Pa
ROLLINS ERIC	Pa	Li	Bl	Fl	Ru	Da	Ri
ROZAK MICHAEL J	Pa	Fl	Ru	Bl	Li	Da	Ri
RUIZ SERGIO T	Ri	Ru	Li	Pa	Fl	Da	Bl
RUNGE DIRK P	Li	Da	Bl	Ri	Fl	Ru	Pa
RUSSELL ERIK L	Ru	Da	Pa	Bl	Fl	Ri	Li
RUTMAN NATHANIEL Z	Pa	Bl	Da	Ru	Ri	Li	Fl

	SUN	MON	TUE	WED	THU	FRI	SAT
SAHANI MANEESH	Bl	Pa	Da	Fl	Ri	Li	Ru
SAIPETCH PONGSKORN	Pa	Bl	Fl	Da	Ru	Li	Ri
SCHAFFER DEAN J	Fl	Li	Ri	Da	Ru	Bl	Pa
SCHAMBERGER G T	Ri	Ru	Fl	Da	Pa	Bl	Li
SCHIMA SUSAN A	Ru	Fl	Da	Li	Pa	Bl	Ri
SCHMIDT JOHN P	Bl	Ri	Da	Ru	Fl	Pa	Li
SCHMIDT MARK A	Ru	Ri	Li	Da	Pa	Bl	Fl
SCHNEIDER ERICH R	Da	Bl	Fl	Li	Pa	Ri	Ru
SEAWARD SAMANTHA A	Pa	Li	Ri	Da	Fl	Bl	Ru
SEED HUCK	Ri	Ru	Bl	Fl	Li	Da	Pa
SELEGUE DYLAN B	Fl	Ri	Li	Ru	Bl	Da	Pa
SETO JANE	Pa	Bl	Ri	Fl	Da	Li	Ru
SHANNON SEAN P	Li	Bl	Ri	Fl	Da	Ru	Pa
SHEK ALEX	Li	Ru	Ri	Da	Fl	Pa	Bl
SHEN RAYMOND T	Ri	Pa	Da	Ru	Fl	Bl	Li
SHERIDAN JULIE	Ri	Bl	Ru	Li	Fl	Pa	Da
SHIM BRIAN R	Li	Da	Ru	Ri	Pa	Bl	Fl
SHMURUN ARTHUR	Li	Ru	Bl	Fl	Ri	Pa	Da
SHORS STEPHANIE M	Pa	Da	Ri	Fl	Bl	Ru	Li
SIDNEY RAYMOND M	Ri	Bl	Ru	Da	Li	Fl	Pa
SLONEKER FREDERICK F	Bl	Ri	Da	Fl	Ru	Li	Pa
SMITH JARED L	Ri	Pa	Li	Ru	Bl	Fl	Da
SOBELMAN STEVEN M	Bl	Li	Fl	Ri	Pa	Ru	Da
SOCOLOW PAUL	Bl	Li	Pa	Fl	Ru	Ri	Da
SOUTHWORTH ROBERT G	Fl	Ri	Da	Li	Bl	Ru	Pa
STIPE BARRY C	Fl	Ru	Ri	Bl	Li	Pa	Da
STORM KURT J	Ru	Ri	Pa	Li	Fl	Bl	Da
STROUD RHONDA M	Fl	Pa	Da	Ru	Bl	Ri	Li
SUKLIKAR ATUL	Pa	Ru	Bl	Li	Fl	Ri	Da
SWANSON WILLIAM J	Pa	Ri	Li	Bl	Fl	Da	Ru

Help.

TANG HAMILTON R	Pa	Ru	Ri	Fl	Li	Da	Bl
TUCKER CHANDRA L	Bl	Ri	Pa	Fl	Li	Da	Ru
TYLER MATTHEW L	Ru	Da	Li	Ri	Pa	Fl	Bl
VAIL EDWARD C	Ri	Li	Pa	Da	Ru	Fl	Bl
VAUGHAN MARK J	Ru	Fl	Ri	Pa	Da	Li	Bl
WARNER ELIZABETH A	Fl	Pa	Ri	Li	Bl	Ru	Da
WEIN ALEX	Bl	Li	Ru	Fl	Da	Ri	Pa
WELSTAND ROBERT B	Da	Ri	Ru	Pa	Fl	Li	Bl
WENDEL JOHN A	Ri	Fl	Bl	Pa	Li	Da	Ru
WENZEL PETER M	Fl	Ru	Pa	Ri	Li	Da	Bl
WONG ALLAN Q	Ri	Da	Pa	Bl	Li	Fl	Ru
WONG DOUGLAS	Ru	Pa	Ri	Li	Bl	Da	Fl
WU SU-LIN	Li	Pa	Bl	Da	Ri	Fl	Ru
WYCKOFF PETER S	Da	Pa	Fl	Li	Ru	Ri	Bl
YAN XIAOJIAN	Ri	Bl	Pa	Da	Fl	Ru	Li
YEAKLEY ANNA M	Fl	Da	Bl	Pa	Li	Ri	Ru
YEE JULIE L	Pa	Da	Ru	Ri	Fl	Bl	Li
YOUSSEFMIR MICHAEL	Da	Ri	Li	Ru	Fl	Bl	Pa
YUAN CHEN	Da	Bl	Fl	Ri	Li	Ru	Pa
YUAN HOWARD	Fl	Li	Da	Bl	Ru	Pa	Ri
ZHU XIAOLEI	Da	Pa	Ri	Bl	Fl	Li	Ru

SPORTS

Beavers' Water Polo Off To A Good Start

—Win First Game Of Season 24-19

by David Bruning

The Caltech Battlin' Beaver Water Polo Team achieved their first of what is likely to be many victories in the first game of the year. The squad went down to Chapman College in the city of Orange expecting a challenge and a victory. What they got was a rout and three stitches.

The game started off in typical Caltech fashion: a 3-3 score after about two minutes of play. This indicates the normal defensive battle that our players wage against our oft large and fierce opponents. By the end of the first quarter, the score was 10-4 and Bruno already had 8 of his 12 goals. By halftime, the score was 16-9 and many frosh were getting ready to play their first ever water polo game.

But alas, all was not to go well. The 6'8" frosh phenomenon, Bill Swanson, started to warm up to play goalie. During this warm-up, he managed to stop a ball between his third and fourth fingers. In the

process, the webbing between his fingers was shredded, and Bill was soon on his way to the emergency room. The current prognosis advises approximately two weeks on injured reserve.

The rest of the game was just as exciting as the first half. Almost everyone on the team scored, including Devin Leonard on outside and penalty shots, Chris Assad on a seeing-eye shot from half-tank, Chris Edgington on at least one of his fast-break shots, Graham Gitlin on a skip-shot, and others whose names were lost in the jumble of the packed score sheet. The final score was 24-19, which was certainly a great way to start the season.

By the time you read this paper, the polo team will probably have demolished Rio Hondo on the path to a great season. Please come out and cheer the polo Beavers on Saturday, October 3, when the illustrious alumni of Caltech return for a match.

The Beavers battled and battered their way to a win against Chapman College last week. Top right: Bruno jockeys for the ball while two chaps from Chapman strive to take it away. Below, the contenders churn up some frenzied white water to pass the ball toward the goal. Final score in the game was Caltech 24, Chapman 19.

Photo by David Bruning

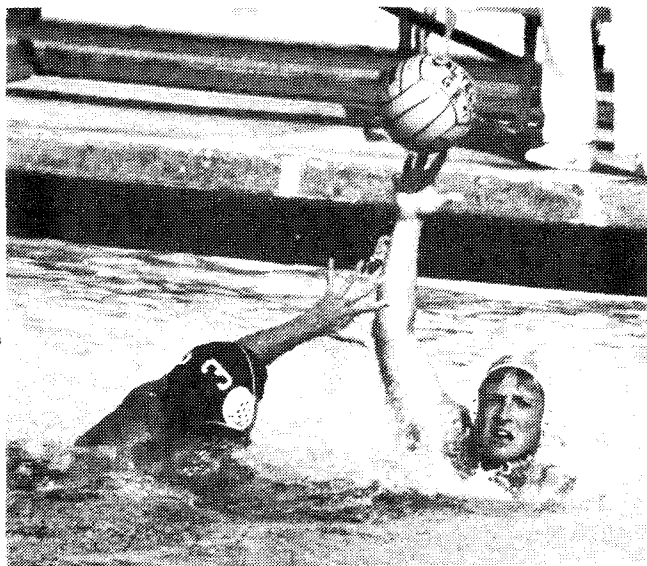
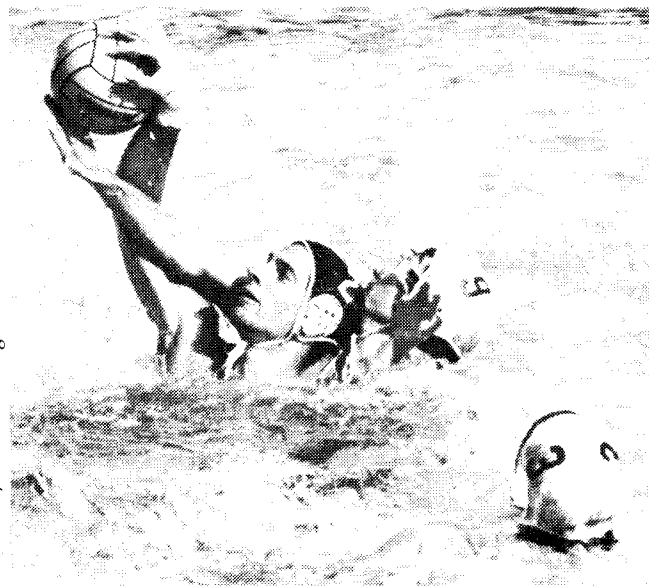
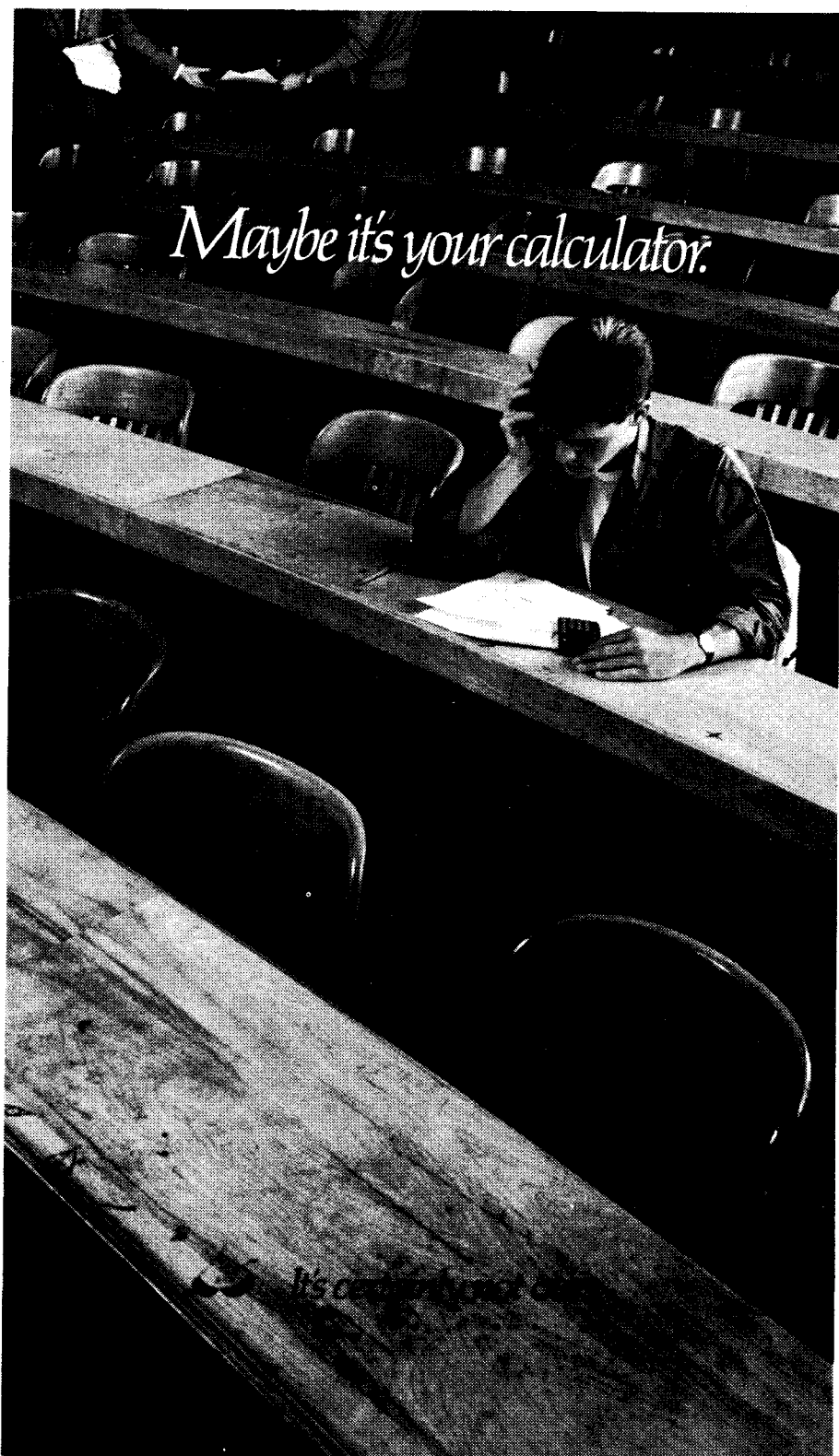


Photo by David Bruning



We know that a cheap calculator can cost you blood, sweat and time.

Investing in a Hewlett-Packard calculator, on the other hand, can save you time and again.

HP calculators not only have better functions. They function better. Without sticking keys and bad connections.

Through October 31, you can get the cream of the calculators at a non-fat price.

We're cutting \$10 off the HP-12C. That buys you more built-in functions than anyone else's financial calculator.

And we're giving away a free Advantage Module, a \$49 value, with every HP-41 Advanced Scientific calculator you buy. This 12K-byte plug-in, menu-driven ROM was designed specially for students.

So drop by your campus bookstore and compare HP calculators with the rest. By midterm, you'll see what a deal this is.

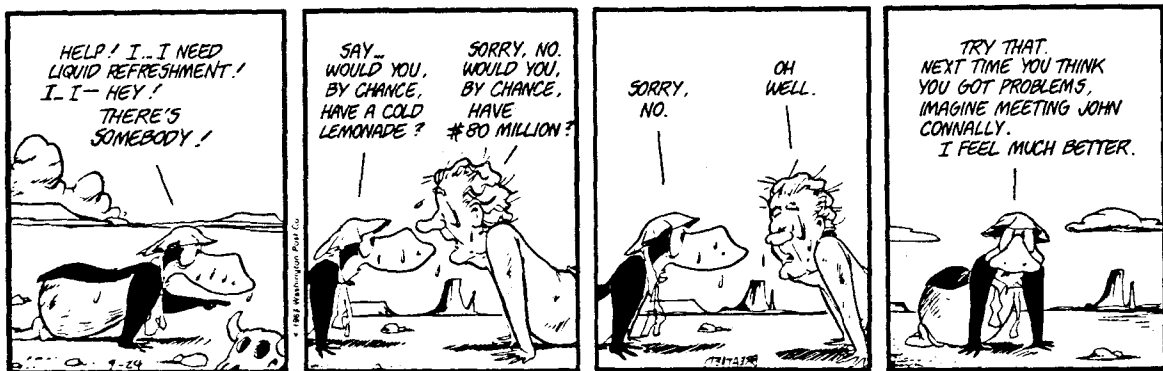
FREE \$49 HP-41 ADVANTAGE MODULE

with purchase of HP-41. Purchase must be made between August 15, 1987, and October 31, 1987. See your local HP dealer for details and official redemption form. Rebate or free Module will be sent in 6-8 weeks.

OR \$10 OFF AN HP-12C.

hp HEWLETT PACKARD

from page 4



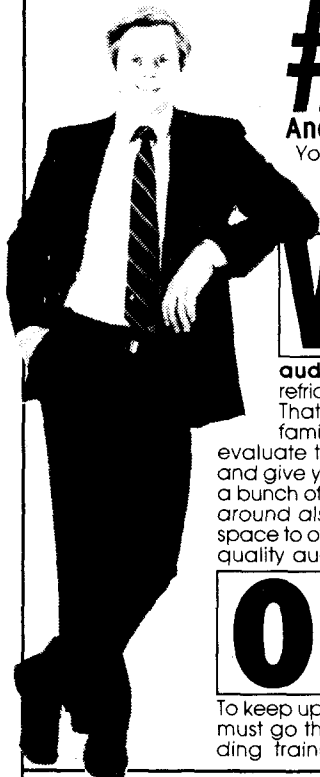
continued on page 10

SPERM DONORS NEEDED

Earn up to \$105 per week. University students only. Area's largest sperm bank. Call: (213) 553-3270.

California Cryobank, Inc. 2080 Century Park East #306 Los Angeles CA 90067

HOW WE GOT TO BE #1 SOUTHERN CALIFORNIA'S AUDIO/VIDEO SPECIALISTS



And how it can benefit you.

You've probably noticed we often describe ourselves as "Southern California's #1 Audio/Video Specialists". It's an important difference that not only sets us apart from other retailers, but means better service, selection and savings for you.

We sell only top brand audio and video. No microwaves, refrigerators or answering machines. That means we can really become familiar with the components we sell, evaluate their features and performance and give you qualified advice. Not having a bunch of dishwashers & trash compactors around also means we can use our store space to offer you a better selection of high quality audio and video components.

Our salespeople are audio/video experts. Yes, everyone uses the phrase "expert". But none deliver on quite like Rogersound Labs. Technology is changing at a frantic rate. To keep up with it, potential RSL salespeople must go through one of the most demanding training programs in the business:

320 SOLID HOURS! Even if they come to Rogersound Labs with years of audio/video experience (which most do, because in the industry we're a desirable place to work), they still go through our 8-week course including many grueling exams. Here we stress technical knowledge (instead of sales-closing ability), as well as how to relate this knowledge to you, the customer, so we don't "talk over your head" with technical jargon. Plus all of our salespeople frequently attend refresher meetings to keep up on the latest.

Specializing keeps our prices low and our buys amazing. Sure, there are stores that offer more brands. We specialize in only the best, and by doing so, often become our manufacturers' biggest dealers. They come to us first with close-out buys on technologically-advanced models because of this volume-buying capability, and because they feel our people have the knowledge to best demonstrate their products' technological aspects and features. Just check out this ad for examples.



Specializing means that you can hear (as well as view) before you select.

There's nothing worse than being assaulted by a whole wall of flashing lights and blaring components. Instead, everything sold at Rogersound Labs is ready for demonstration. In orderly sound and video rooms where you can sit down, relax and really experience a component for as long as you like. You can even bring in your own music or videotapes to use for demonstration.

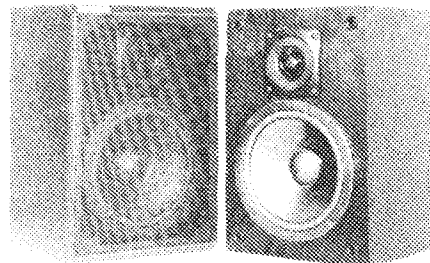
We got to be Number One by NOT working on commission. RSL offers a refreshing alternative to the fast-talking, high-pressure railroading types found at most of our competitors. We take the time to listen to your needs and apply our product knowledge. You end up with exactly what you need. No more. No less. We figure that if you treat someone right, you don't need pressure. Stop in soon and we're sure you'll agree that shopping at Southern California's #1 Audio/Video Specialists is well worth it.

Minimum Size! MAXIMUM MUSIC!

RSL 1600 \$85 EA
MINI MONITOR

- A true audiophile mini-speaker
- Perfect for extension speakers
- Great for rear surround sound
- Excellent "satellite" performance
- 6.5-inch polypropylene woofer
- Balanced drive tweeter
- High power handling
- Detachable grilles

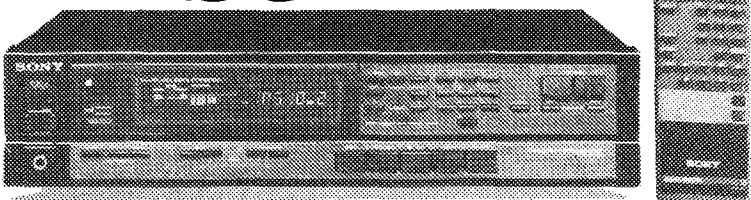
FACTORY DIRECT



Though just 12 inches high, our remarkable RSL 1600 Mini Monitors put out audiophile quality, room-filling sound. With a bass response of -3dB at 55Hz, these speakers would be a great buy at triple the price, but it's always been the RSL way to offer the best values anywhere. RSL 1600 Mini Monitors image superbly, render midrange with fluidity and detail and have smooth, well-dispersed treble. We guarantee that you will be utterly flabbergasted at their performance or your money back within 7 days. And you also get a 5-year Parts and Labor Limited Warranty.

\$219 REMOTE CONTROL RECEIVER SONY

26% OFF
MFR LIST \$299
\$219



LOWEST REMOTE CONTROL RECEIVER PRICE EVER! AND IT'S LOADED WITH EXCLUSIVE SONY FEATURES!

- 10 FM/AM presets
 - 10-key direct station access
 - 4-second Preset Scan
 - Manual & auto tuning
 - Direct Comparator Circuitry
 - 35+35 watts RMS
 - 3-setting Acoustic memory
 - Video sound inputs
 - Feather-touch controls
 - Remotes with other components
- Own-a-Sony at a history-making low RSL price! Those who aspire to couch-potato-ism, take note: The STR-AV450 has remote control of volume, source, muting, on/off, station preset tuning and more. Those who want great sound and super features will love the 3-preset Acoustic Memory that lets you store and instantly recall up to 3 tone control settings. Digital Direct tuning access, memory scan that previews each FM/AM preset for 4 seconds, automatic volume fade-in after muting and the ability to control Sony compatible CD players, turntables and cassette decks with the same remote. Dual power supplies deliver up to 55 watts per channel dynamic power for musical peaks.

NO BETTER RACK SYSTEM HAS EVER BEEN OFFERED FOR THE MONEY

Kenwood's powerful \$749 matched Spectrum system has unique features and the unbeatable performance of true separate components. If you pay less for an off-brand anywhere else you'll be settling for less for years to come.

- Separate KM-106 125 W/Ch Power Amp
- Separate KC-106 Control Preamplifier w/ built-in 7-band EQ, video sound inputs
- 16-preset KT-56 Quartz FM/AM Tuner with autoscanning
- Double Cassette KX-56 Dubbing Deck with Dolby B* high speed dubbing & relay play
- KD-26 Auto-return Belt-Drive Turntable with cartridge
- 12-inch 3-way JL-760 Floorstanding Speakers
- Beautiful SRC-560 matching audio rack with record storage
- Optional matching 16-track programmable CD player for \$100

45% OFF
MFR LIST \$1365
\$749

Or just \$39.45/mo. No payments 'til Dec. on approved credit

*Dolby is rumored to be a trademark of Dolby Licensing Inc.



KENWOOD

\$39.45/mo. for 22 months
\$103.69 Downpayment
A.P.R. 19.82% O.A.C.
Total Deferred Pr. \$971.59

OPTIONAL MATCHING CD PLAYER AVAILABLE



RSL ROGERSOUND LABS

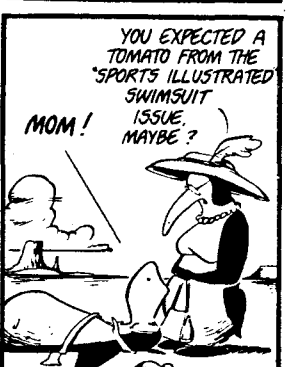
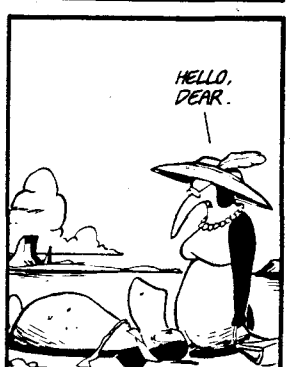
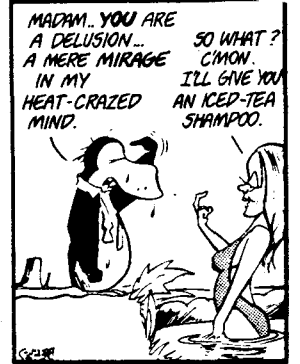
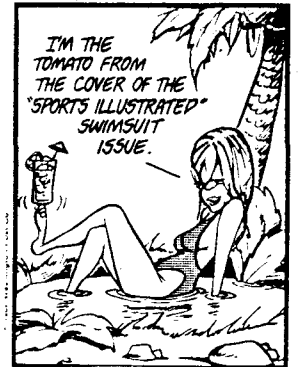
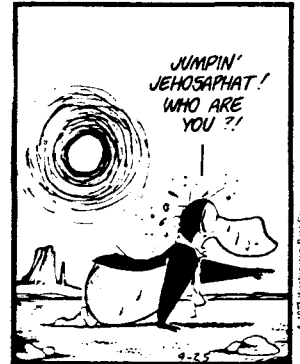
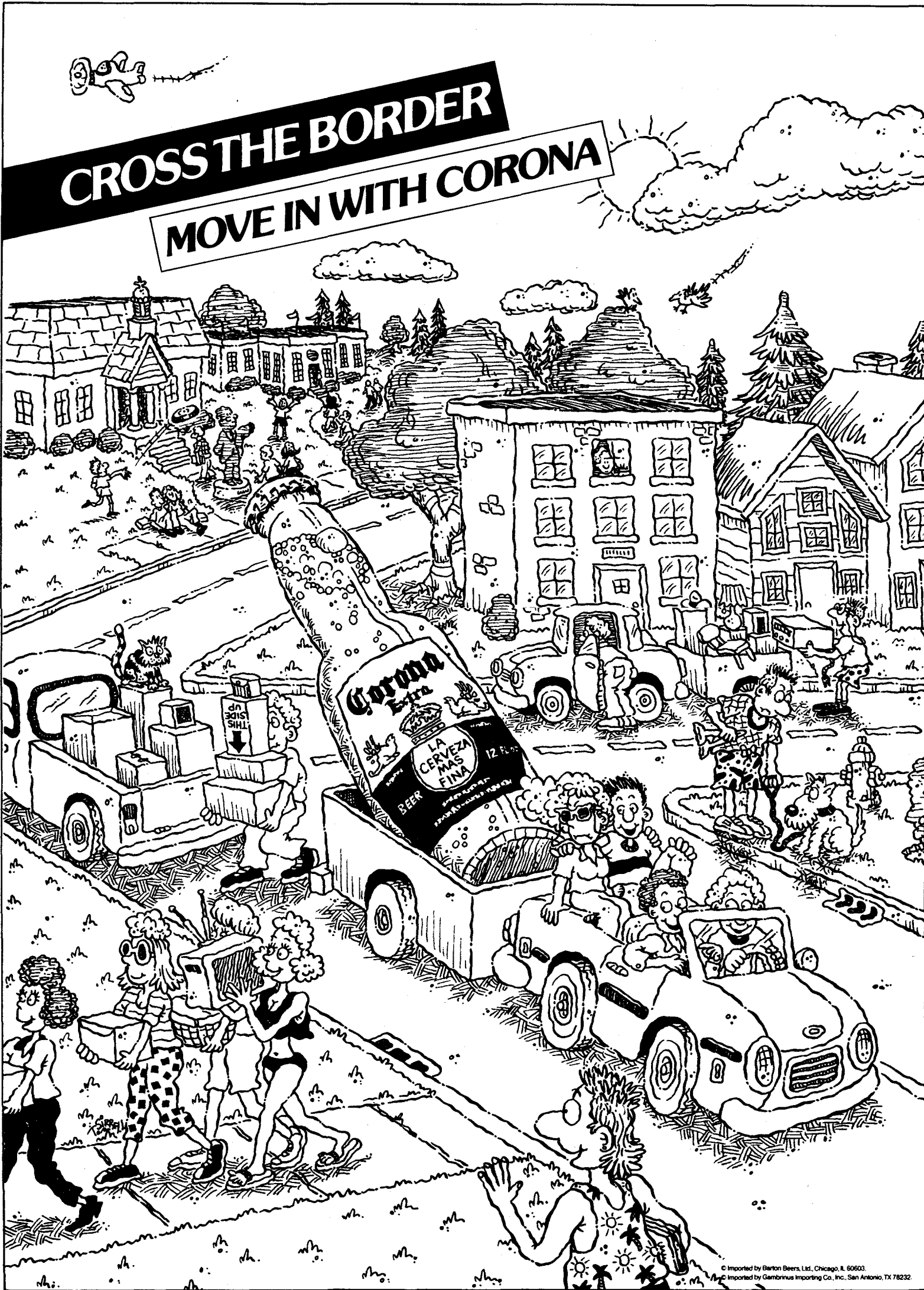
Store Hours: Monday-Friday Noon to 9 PM, Saturday & Sunday 10 AM to 6 PM
WE DON'T WORK ON COMMISSION, FINANCING AVAILABLE

CANOGA PARK 8347 Canoga Avenue (818) 882-4600 (213) 873-3051	VAN NUYS 4331 Sepulveda Blvd (818) 787-6863 (213) 873-3345	SANTA MONICA 2720 Wilshire Boulevard Free Parking in Rear (310) 829-7119	PASADENA 1111 132nd Street (818) 351-5421 (213) 681-4977	TORRANCE 24119 Hawthorne Blvd (213) 540-6868 (213) 772-2706	WESTMINSTER 5521 Beulah Blvd (714) 594-9646 (714) 893-7558	EL TORO 4211 1/2 Swarthmore (714) 380-8778 (619) 722-1036
--	--	--	--	---	--	---

MAIL ORDER BY PHONE
Toll-free numbers are for Order Operators, who do not have product information. Anywhere in California 1-800-835-5775. Outside of California 1-800-443-4775.
Order Hours are from 8:30 AM to 5 PM Monday-Friday, 10 AM to 6 PM Saturday & Sunday. For Product Information, please call the store nearest you during store hours.

OUR PRICE POLICY:
If you're an RSL customer, you know that long before our competitors turned price guarantee into a tired phrase, you've always been able to count on us to meet or beat any legitimate advertised price for the items in our ads. If you purchase any item in this ad and find a lower locally advertised price within the next 30 days, we'll refund the difference in store credit, without making a big deal.

Our prices show the manufacturer's suggested retail price for comparable purposes and may not reflect a sale or other promotional offer.



© Imported by Barton Beers, Ltd., Chicago, IL 60603.
 © Imported by Gambinus Importing Co., Inc., San Antonio, TX 78232.


CLASSIFIED
HELP WANTED—
MALE STUDENTS WANTED! University students as sperm donors by California's largest sperm bank. Earn \$70-105/week. (213) 553-3270 California Cryobank, Inc., 2080 Century Park East #306, Los Angeles.
FOR SALE—
HITACHI CD PLAYER. Won in contest; BRAND NEW. Plays 6 CD's. Also Panasonic 5 1/2" B&W indoor/outdoor TV. 793-3019
SERVICES—
INSURANCE WAR! We'll beat anyone's prices or don't want your business. Sports cars, multiple tickets, good-driver discounts. Request "Caltech Plan." (818) 992-6966 or (213) 873-3303.
RATES \$2.50 for first 25 words; 10¢ for each additional word. Send written ad with payment to 25-58. No charge for on-campus lost & found.

The world is waiting. Be an exchange student.

International Youth Exchange, a Presidential Initiative for peace, sends teenagers like you to live abroad with host families. Go to new schools. Make new friends.

If you're between 15 and 19 and want to help bring our world together, send for information.

Write: YOUTH EXCHANGE
Pueblo, Colorado 81009

 The International Youth Exchange.



CALTECH public events

WELCOMES STUDENTS WITH
MORE MAGIC MOMENTS

Welcome to all students! This year Public Events has planned an especially exciting season of performances beginning on Saturday, October 3 at 8 p.m. in Beckman Auditorium with **The Vienna Choir Boys**. A variety of choral music is offered by these young choristers. CIT student prices to this event are \$12.50-11.25-10.00.

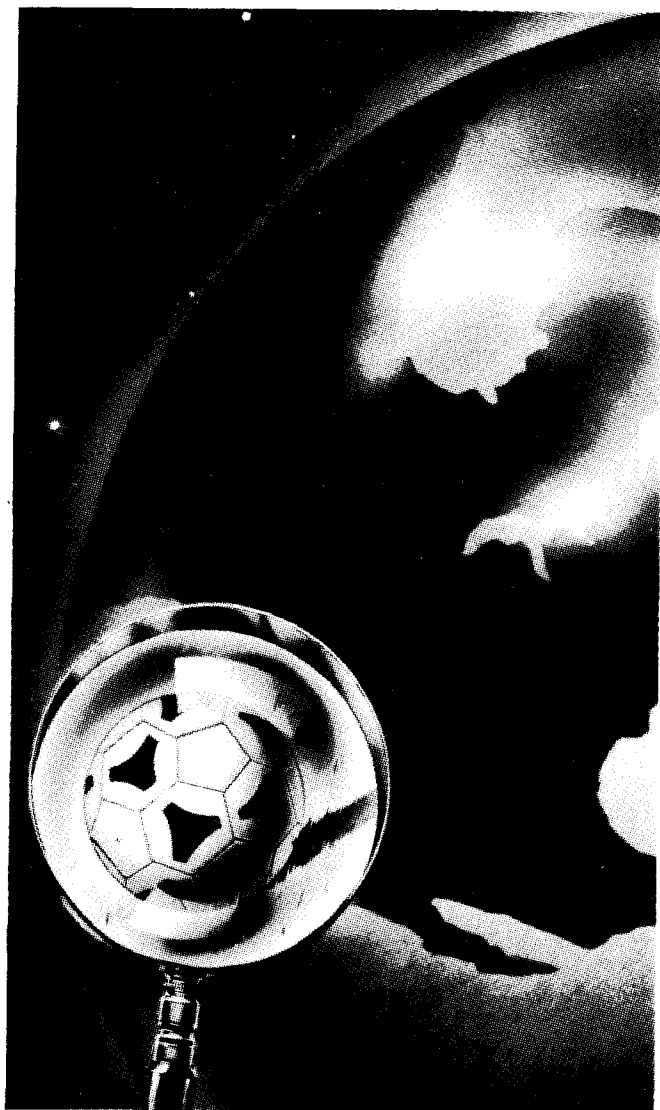
Fast-moving displays of flashy hocus-pocus will amaze and astound you when **David Seebach** brings "Wonders of Magic" to Beckman Auditorium on Saturday, October 10 at 8 p.m. This remarkable magician will leave you entranced with innovative levitation and spectacular illusions. CIT students can purchase tickets to this event for only \$10.00-8.75-7.50.

Then on Tuesday, October 13, **The Second City Touring Company** comes to Beckman Auditorium with rip-roaring comedy that will knock you off your seat. See tomorrow's stars today as the company, which spawned John Belushi, Joan Rivers and Bill Murray, deals with social, cultural and political satire. CIT student tickets are \$7.50-5.25-5.00.

Speaking of political satire, you'll want to order your tickets NOW for "The Laughter and Song of Politics" with **Mark Russell** on Friday, February 19, 1988. This show is almost sold out already, so call the Ticket Office today. CIT student prices are \$12.50-11.25-10.00.

By popular demand we are bringing back such favorites as **The Flying Karamazov Brothers**, the **San Francisco Mime Troupe**, the **Cambridge Buskers** and many more. You can also see such superstars as **Helen Reddy** and **The**

TECHNOLOGY FOR A NEW AGE



© TRW Inc. 1987. TRW is the name and mark of TRW Inc.

Who Do You Call When You Want To Identify A Soccer Ball From 22,300 Miles In Space?

If your answer is Ghost Busters, we want to wish you all the best and have a nice day. If you answered "TRW", here's the rest of the story.

The U.S. Air Force asked us to build a ground-based electro-optical surveillance system that could identify an object the size of a soccer ball from 22,300 miles in space. We did it, utilizing 3 telescopes and a large computer system. Then they asked us to build four more. Quite an achievement, but it's just one example of TRW's impact on the future.

TRW offers you the freedom to move among a wide variety of opportunities in microelectronics, high energy lasers, large software systems, communications, and scientific spacecraft. If you're majoring in engineering, computer science, math, or physics, and want to be with a company that's driving technology into the next century, it's not too soon to talk. Tomorrow is taking shape at a company called TRW.

If you are unable to see us on campus, please send your resume to: **TRW, College Relations, E2/4000, One Space Park, Redondo Beach, CA 90278.**

Because Anywhere Else Is Yesterday.

Equal Opportunity Employer
U.S. Citizenship Required

**TRW will be on
campus Nov. 11
See your college
placement office
to sign-up.**

TRW

A Company Called TRW

WHAT GOES ON

Minority Fellowships

The National Consortium for Graduate Degree for Minorities in Engineering, Inc., (GEM) is accepting applications for its 1988 Fellowship competition which will provide one-hundred and thirty (130) awards to minority students in engineering.

Designed for members of ethnic groups that are underrepresented in engineering, the program's goal is to increase the pool of minority students who receive master's degrees annually in engineering. Persons applying for the program must be American Indian, Black American, Mexican American, or Puerto Rican, and must be citizens of the United States. At the time of application, the minimum academic requirement for the student is enrollment in the junior year of undergraduate study in one of the engineering disciplines. Those presently in their senior year or recently graduated are also encouraged to apply.

As a GEM fellow, each participant must be free to work during the summer as an intern for a member employer and must complete the academic work for the master's degree at one of the member universities. In all, there are 52 member employers and 52 member universities.

Each fellowship pays tuition, fees, and a stipend of \$5,000 per academic year, as well as provides summer employment with a sponsoring member employer. The total value of the award is anywhere between \$20,000 and \$30,000 and depends upon which member university the Fellow elects to attend.

Applicants must be received by December 1, 1987. Awards will be announced February 1, 1988. Information on the program, as well as application materials, may be obtained from:

GEM Program
P.O. Box 537
Notre Dame, IN 46556

TACIT Presents

Calling all thespians! The organizational meeting for TACIT's production of *Oliver!* and "A Life in the Theatre" will be held Sunday, October 11 at 1:00 pm in Winnett Center Lounge. Anyone interested in participating in the cast, crew, orchestra or production side of things should be sure to come by. You NEEDN'T ACT to be involved. If you have any questions or are interested and unable to attend, please contact ROBERTA at x6259.

Work-Study At The Red Door

Work-Study jobs paying \$6.00 per hour are available at the Red Door Cafe (2nd floor of Winnett, around the corner from The Y). Available shifts are 2-6 pm, Monday-Friday, 12-5 pm Saturdays, and possible evenings from 8-12. The Monday shift may be lengthened to 2-7 pm. Requirements are: a liking for people and the ability to ask for help without embarrassment. Flexibility and a sense of humor are musts. Apply at the Red Door, or call x6158.

Watson Fellowships

The Watson Foundation provides post-graduation fellowships of \$13,000 (\$18,000 for married students) for a year of independent study and travel. Fellowships are not intended to support extended formal study at a foreign university. They encourage, instead, an informal break in the normal sequence of undergraduate/post-graduate education. Caltech students are frequently chosen for this award. In fact, four recent graduates—Mark Carlin, Joe Francis, Rosemary Macedo and Andy Tikofsky—are on Watson Fellowships this year.

Drafts of project proposals are due on Friday, October 16th. Seniors interested in applying for these travel fellowships should talk to Gary Lorden or Jeanne Noda in the Deans' Office, 102 Parsons-Gates.

Amateur Radio Club

On Tuesday, October 6 at 8:00 pm in the Y Lounge (upstairs Winnett) the Caltech Amateur Radio Club will have its 1987-88 organizational meeting. Free pizza and cold drinks will be provided to accompany a talk on the history of and plans for the club in the coming year. If you are a licensed "ham" or if you are just interested, please drop by. Bring your ideas and your two-meter handhelds.

Informal club get-togethers are on Tuesdays at 8:00 pm in the Radio Club Shack in Winnett Student Center. Formal meetings are set for October 6, December 1, February 2, April 5 and June 7. Further information about the club may be obtained from Dave Ritchie, the club secretary, at (818) 449-7371. You may also leave a message on the club's answering machine at x3939. Membership is open to all members of the Caltech community including undergraduates, graduate students, staff, faculty, alumni, jpl-ers, and hangers-on. Anyone interested is encouraged to get in touch with Dave Ritchie—demonstrations and tours can be arranged at any time.

Feeling Operatic?

The 1987-88 Los Angeles District Auditions of the Metropolitan Opera will be held October 15-17 in Hancock Auditorium at U.S.C. The auditions are open to singers between the ages of 19-35 whose voices are of operatic caliber, who have had voice training, and who have the recommendations of two qualified sponsors. Winners receive cash prizes and may compete in the Western Regional Auditions, held November 12-14 also at U.S.C., with the opportunity to progress to the national finals competition at the Metropolitan Opera in New York. For further information and application forms, write to Metropolitan Opera Auditions, P.O. Box 622, Arcadia, CA 91006 right away. Deadline for returning the applications is October 1.

Learn To Fly!

Have you ever wanted to fly an SR-71? Did you know that a lot of people in the Caltech Flying Club would like to also? We don't have many of those available, but we do have four other aircraft which are only a little slower than the Blackbird, and they are just waiting for new members to fly them. If you would like to find out more about the Aero Association of Caltech, then CONTACT (a little aerial humor there): Jay Ebersohl, 1-55, x6182, or Jim Kaufman, 264-33, x3807.

Lose Blood, Gain Beer

The Caltech Fall Blood Drive will be on Tuesday, October 27 (9:45 am to 2:30 pm), Wednesday, October 28 (12:15 to 5:00 pm), and Thursday, October 29 (8:15 am to 1:00 pm). There will be a contest between the Graduate and Undergraduate houses to see who can donate the most pints of blood. The rules are: 1/2 keg of beer or an equivalent amount of soft drinks goes to the house with the highest percentage of donors. The blood drive will be in Winnett Lounge. Please make appointments in advance if you can, although drop-ins are welcome if you can't plan ahead. For appointments call Denise Okamoto, x6374 in the Personnel Office.

Caltech Christians

The Caltech Christian Fellowship will have its first meeting of the year on Tuesday, 29 September, downstairs in the Winnett Lounge. All are welcome to join in song, prayer and fellowship. For information phone Paul Smith at 449-8391 or x6522.

Language

While the core of the Foreign Language program remains the same, there are some new things in store worth noting:

First a change that will affect all second year language students. The Humanities faculty has voted to grant *advanced Humanities credit to the sixth quarter of language* (L 103C, L 132C and L 153C respectively)—a move which students will appreciate.

Here is your chance to get a quarter of third year German added to the program. If enough students express interest in such a course, Professor Andreas Aebi will offer it in the spring quarter. It will focus on advanced conversation, reading of newspapers and contemporary literature, essay-writing and stylistics and discussion of current events, and will receive advanced Humanities credit. Please drop a line to Professor Aebi (101-40) or call him (x3620) to indicate your possible commitment to such a course.

Professor Sigrid Washburn will teach two German Lit courses in Translation (L 160 A,B). While the fall quarter course is not new (Highlights of German Lit from the Middle Ages to the Romantic Period) it has a new reading list this year, ending with Kleist's *Marquise of O* and the showing of Eric Rohmer's famous movie of the same title.

The winter quarter course, however, is completely new. L 160 B will focus on "Exile Literature, 1933-45" and cover stories, novels and plays by German writers who settled in the L.A. area after fleeing Nazi Germany: Heinrich, Thomas and Klaus Mann, Bertold Brecht and Lion Feuchtwanger. Movies based on these works will accompany the course.

Meanwhile, the German Film Series will continue its successful course, featuring, this year, seven

movies on various images of World War II.

In the fall quarter Professor Smith will teach contemporary French literature (L 152 B) in conjunction with movies based on or related to the literary works discussed in class.

In the winter quarter, newly appointed Professor Anthony Zielonka (fresh from the U.K.) will teach the Nineteenth Century French Novel in French (L 105). It will include novels by Benjamin Constant, Stendhal, Balzac and Flaubert and will also be accompanied by relevant movies. Since the reading and discussions will be in French, this course will, in effect, duplicate as a third year French and answer the needs of students who expressed the desire to continue their study of the language beyond the second year level. It will receive advanced Humanities credit.

Professor George Cheron's Intermediate Russian and Russian Lit in Translation (L 153 A,B,C, and L 165 A,B,C,) will have a more flexible schedule this year. Note that, due to Professor Cheron's research voyage to Russia, the OM for 153 will be Monday, October 5th, at 2:00 pm in Baxter 125; as for 165, it will organize on Monday, October 5th at 1:00 pm in Dabney 2.

Finally, Professor Maryse Condé from France and Guadeloupe will offer two new Lit courses the spring quarter: an "Introduction to the Literature of French and English speaking Caribbeans" and another one more theoretical (and still untitled) which will focus on the relationship of oral and written literature. Professor Condé was on the Sorbonne faculty and taught in Africa. She is a distinguished critic of third world literature as well as an award-winning playwright and novelist. We hope many students will avail themselves of this opportunity to study non-western literature with a highly qualified specialist.

Bon appétit!

FREE DELIVERY

PIZZA, SUBS, & MORE

Pizza by the Slice

A short walk from campus

Eat-in or take-out

Monday & Tuesday

Free refills on soft drinks

We accept all competitors' pizza coupons

524 S. LAKE AVE., PASADENA

Just north of California

CALL 792-5984

We deliver our entire menu — call us!

15% DISCOUNT WITH STUDENT ID

NOT VALID ON DELIVERY OR ANY SPECIAL OR COUPON OFFER

**\$6.00
SPECIAL**
(TAX INCLUDED)

SMALL PIZZA
with any 2 toppings

NOT VALID ON ANY SPECIALS OR WITH ANY OTHER COUPON OFFER.

ONE COUPON PER PIZZA.
COUPON EXPIRES 10/2/87

**FREE
6-Pack Soda**
with minimum
\$8.00 order

NOT VALID WITH ANY OTHER COUPON OFFER.

ONE COUPON PER ORDER.
COUPON EXPIRES 10/2/87

**\$9.00
SPECIAL**
TAX INCLUDED

LARGE PIZZA
with any 2 toppings

NOT VALID ON ANY SPECIALS OR WITH ANY OTHER COUPON OFFER.

ONE COUPON PER PIZZA.
COUPON EXPIRES 10/2/87

CCO 1a**COMPUTING FUNDAMENTALS**

C will be taught this term

(instead of Pascal as stated in the catalog)

ORGANIZATIONAL MEETING

Tuesday, Sept. 29, 3 P.M. • 102 Steele

CAMPUS COMPUTING ORGANIZATION