

Ingersoll's Great Red Spot

Jupiter's Great Red Spot — a mystery to astronomers since its first official "discovery" in 1957 — may be a hurricane-like vortex of hot air spiraling up through the planet's atmosphere.

That's a conclusion of Dr. Andrew P. Ingersoll, associate professor of planetary science. The view, formulated in the last year, represents the joint thinking of Ingersoll and other scientists.

Although the established history of Jupiter's Great Red Spot begins only in 1957, it may have been detected as early as 1664. Under constant observation since 1878, it has been found to vary greatly in color, form, intensity, and motion, oscillating with respect to longitude by about two percent of its own width.

Usually about 20,000 miles long and 8,000 miles wide, it has

varied from an intense brick red to a faint gray. Even when it has temporarily vanished from sight, its existence has been discernible by a hollow in the southern part of Jupiter's southern equatorial belt.

Non-Solid State

"Because of its long life, a lot of people have wanted to believe that the Great Red Spot is associated with a solid object floating in the atmosphere or a plateau attached to the planet's surface," Ingersoll said. "It bothers people to think of an atmospheric feature lasting for hundreds of years.

"But on Jupiter, weather features last that long. The reason may lie with the huge mass of Jupiter's atmosphere which is probably thousands of miles thick.

"The mass of the atmosphere below the banded clouds that we observe through a telescope acts like a flywheel — it tends to damp out any change. Any large

Continued on Page Six

No Pb Bricks In Synch Driveway!!!

by Dennis Mallonee

The Plymouth Valiant that currently resides in the Synchrotron driveway is what is affectionately known as the Campus Security Vehicle.

There exists a certain amount of confusion at Caltech about what the Security Vehicle does. We'd like to clear up that problem once and for all.

In the beginning, Caltech was a small institution, devoid of area. It was easily patrolled on foot. As the campus expanded, it became more difficult for Security to do an effective job. Thus, the Campus Security Vehicle, which patrols the perimeter of the campus.

The Security Vehicle carries first aid equipment, oxygen apparatus, blankets, and a security officer who carries an American Red Cross first aid certificate.

G&C For Clean Air

Project Offering Course

The Clean Air Car Project will be giving a special course in auto emissions next term. James Hen3ry, responsible for the bulk of the instructional chores, em-

The Vehicle and Nancy Anderson's electric buggy (also to be equipped with the same outfit) are the first and most important sources of first aid for Techers. There have been many times when an ambulance has been called for after an accident in the Student Houses and shown up late or not at all.

Which brings us to the point of all this. The Campus Security Vehicle is the fastest source of aid on campus. The Synchrotron driveway must be kept clear or it won't be able to get out. Remember, call Security (x1702) when you get zonked.

phasizes that students are going to look at the real world side of an engineering problem. In environmental areas, non-technical problems often prove to be far more difficult obstacles than the obvious technical ones.

The course is planned in a six unit (3-0-3) lecture-discussion format. It is hoped that outside speakers will be able to give additional insights into real world problems. One recommended optional assignment will involve going to an Air Resources Board meeting. There will be several written assignments which require technical information to be presented to various technically and non-technically oriented audiences.

No special background is needed and freshpeople are encouraged to take the course. The CACP will give brownie points for the class when hiring new project members for the summer.

To pre-register for the course, sign up for ME 100 with Dr. Fred Culick as instructor. More information can be obtained by calling James Hen3ry or John Batchelder at x2694 during the day or 793-6686 in the evening.

Chamber Music Club Wants Your Bod

If you play a musical instrument (especially a string), the Caltech Chamber Music Club wants you. Our purpose is to broaden the possibilities for music making. For those interested in small chamber ensembles, we have buying money for our music library.

For those interested in a chamber orchestra, we have one under the direction of Tony Templeton which meets Saturdays at 1:00 p.m. and Wednesdays at 9:00 p.m.

If you are interested in any way, call Klaus Englehardt, at 796-6881.

HELP

WANTED NEEDED!

The California Tech needs a typist to work Monday and Tuesday evenings, total of about six hours a week.

Apply at the Tech office, or call ext. 2154.

An equal opportunity employer.

FOREIGN STUDENTS SHIPPING SPECIALISTS OF

BAGGAGE HOUSEHOLD ARTICLES COMMERCIAL CARGO

AIR • OCEAN • TRUCK Pick Up & Delivery Packing & Crating

Insurance Documentation Estimates given without obligation 10% off with Caltech ID

ANYWHERE-ANYTIME A REGISTERED AGENCY



Martin Lewin Transcargo, Inc.
2240 N. Figueroa St.
Los Angeles, CA 90065
(213) 225-2347

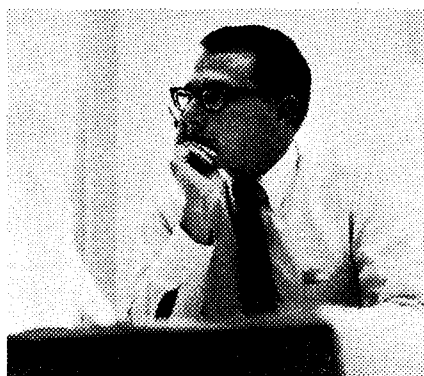
Do you think a bright young Electronics Engineer should spend his most imaginative years on the same assignment?

Neither do we.

That's why we have a two-year Rotation Program for graduating engineers who would prefer to explore several technical areas. And that's why many of our areas are organized by function—rather than by project.

At Hughes, you might work on spacecraft, communications satellites and/or tactical missiles during your first two years.

All you need is an EE degree and talent.



If you qualify, we'll arrange for you to work on several different assignments...and you can help pick them.

You may select specialized jobs, or broad systems-type jobs. Or you can choose not to change assignments if you'd rather develop in-depth skills in one area.

Either way, we think you'll like the Hughes approach.

It means you'll become more versatile in a shorter time.

(And your salary will show it.)

HUGHES

HUGHES AIRCRAFT COMPANY EQUIPMENT ENGINEERING DIVISIONS

Some of the current openings at Hughes:

- Electro-Optical Engineers
- Microcircuit Engineers
- Guidance & Controls Engineers
- Components & Materials Engineers
- Circuit Design Engineers
- Product Design Engineers
- Laser Engineers
- Radar Engineers
- Systems Programmers
- Physicists

For additional information, please contact your College Placement Director or write:
Mr. Robert A. Martin
 Head of Employment
 Equipment Engineering Divisions
 Hughes Aircraft Company
 11940 W. Jefferson Blvd.
 Culver City, California 90230
 U. S. Citizenship is required
 An equal opportunity employer M & F

CAMPUS INTERVIEWS FEBRUARY 26

Contact College Placement Office to arrange interview appointment.

